

Welcome Home to . . .

THE WOODLANDS



Hampton Manor

Toll Brothers
America's Luxury Home Builder®

A Convenient Place to Live

In Green Level Crossing, you will enjoy the relaxed atmosphere of tranquil country living with superior schools, excellent shopping, and a wide choice of cultural events close to home. Green Level Crossing is just 10 minutes from Interstate 40 and RTP, the home to many high-tech, pharmaceutical, environmental science, and other research-based employers. Downtown Raleigh can be reached in 25 minutes. Raleigh-Durham International Airport is just 20 minutes from your new home.



A Focus on Education

As a Green Level Crossing homeowner, you will join a community where education is given the highest priority. Children will attend schools in the Wake County Public School System, where numerous extracurricular clubs offer students the opportunity to participate in the arts and sciences. Gifted programs are available at all grade levels, and college advanced placement courses are offered at the high school level.

Superb private and parochial schools, including Cary Academy, Cary Christian School, St. Michael the Archangel School, Chesterbrook Academy, Cardinal Gibbons High School, Heartwood Montessori School, and Durham Academy, are all within 20 minutes of Green Level Crossing.

This area is home to several prominent universities. Duke University, The University of North Carolina at Chapel Hill, and North Carolina State University are all less than 25 minutes away. Nearby, Wake Technical Community College offers continuing education with a wide selection of day and evening courses.

World-Class Shopping at Your Doorstep!

Green Level Crossing is close to all types of shopping, from quaint antique and specialty boutiques to modern malls. For convenient one-stop shopping, Peak Plaza and High House shopping centers are less than 5 minutes away. In charming downtown Apex, you will discover unique stores where you can count on receiving personalized service from shopkeepers who remember you by name. Beaver Creek Commons, a growing retail center, is less than 5 minutes away, boasting over 750,000 square feet of restaurants, theaters, and stores. The Cary Towne Center mall and the fabulous Streets at Southpoint mall are both less than 20 minutes from Green Level Crossing. These malls feature upscale shopping at Nordstrom and Macy's, as well as over 170 shops and eateries. Crabtree Valley Mall is 25 minutes away and features over 220 fine specialty shops and restaurants.



A Cultural and Recreational Paradise!

From Green Level Crossing, the cities that make up the Triangle region — Raleigh, Durham, and Chapel Hill — are just minutes away. This location in the heart of North Carolina — just a 2-hour drive east to the sparkling beaches of the North Carolina coast and 3 hours west to the majestic Blue Ridge Mountains — is part of what makes the Triangle region so desirable.

The beautiful Jordan Lake is only 15 minutes away and offers boating and other water sports. Several local and state parks are located within 10 minutes, including Brooks Park, Bond Park, Kelly Road Park, Apex Community Park, and the American Tobacco Trail. At these parks, you and your family can enjoy swimming, fishing, hiking, and biking. Fitness and exercise clubs are within 5 minutes of your new home.

Several exciting private and semiprivate golf courses and country clubs are nearby, including Brier Creek Country Club, Prestonwood Country Club, Devil's Ridge Golf Club, and McGregor Downs Country Club. Challenging public golf courses, including Lochmere and The Preserve at Jordan Lake Golf Clubs, are within 15 minutes.

The Triangle area offers the broad variety of cultural diversions that you would expect to find in Raleigh, North Carolina's state capital. Discover art and history at the North Carolina Museums of Art, History, and Natural History, or enjoy a theatrical presentation at a variety of venues. Downtown, the Progress Energy Center for the Performing Arts, a theater and music hall complex, comprises five venues — Fletcher Opera Theater, Meymandi Concert Hall (home of the North Carolina Symphony), Kennedy Theater, Lichtin Plaza, and the Raleigh Memorial Auditorium. These theaters regularly feature music, dance, comedy, and Broadway touring productions. For more intimate plays and presentations, experience the quaint setting of the Raleigh Little Theatre. During the summer, delight in a show or concert under the stars at the Koka Booth Amphitheater at Regency Park in Cary, the outdoor amphitheater at the Raleigh Little Theatre, or Lichtin Plaza at the Progress Energy Center. For fine dining, excellent restaurants and country inns abound in the Triangle area.

Sports fans can cheer for professional teams, including the 2006 Stanley Cup champions, the Carolina Hurricanes, the NFL's Carolina Panthers, and the Durham Bulls baseball team. Sports fans can also cheer for college teams from the three major Atlantic Coast Conference universities in the Triangle: Duke University, North Carolina State University, and The University of North Carolina at Chapel Hill.



An Area of Unequaled Beauty

In Green Level Crossing, your home is a private haven just minutes from any convenience you may need. In addition, the homes afford an uncommon standard of excellence due to their superior design and quality craftsmanship. You will live and entertain with pride in Green Level Crossing.



The Edgebrook

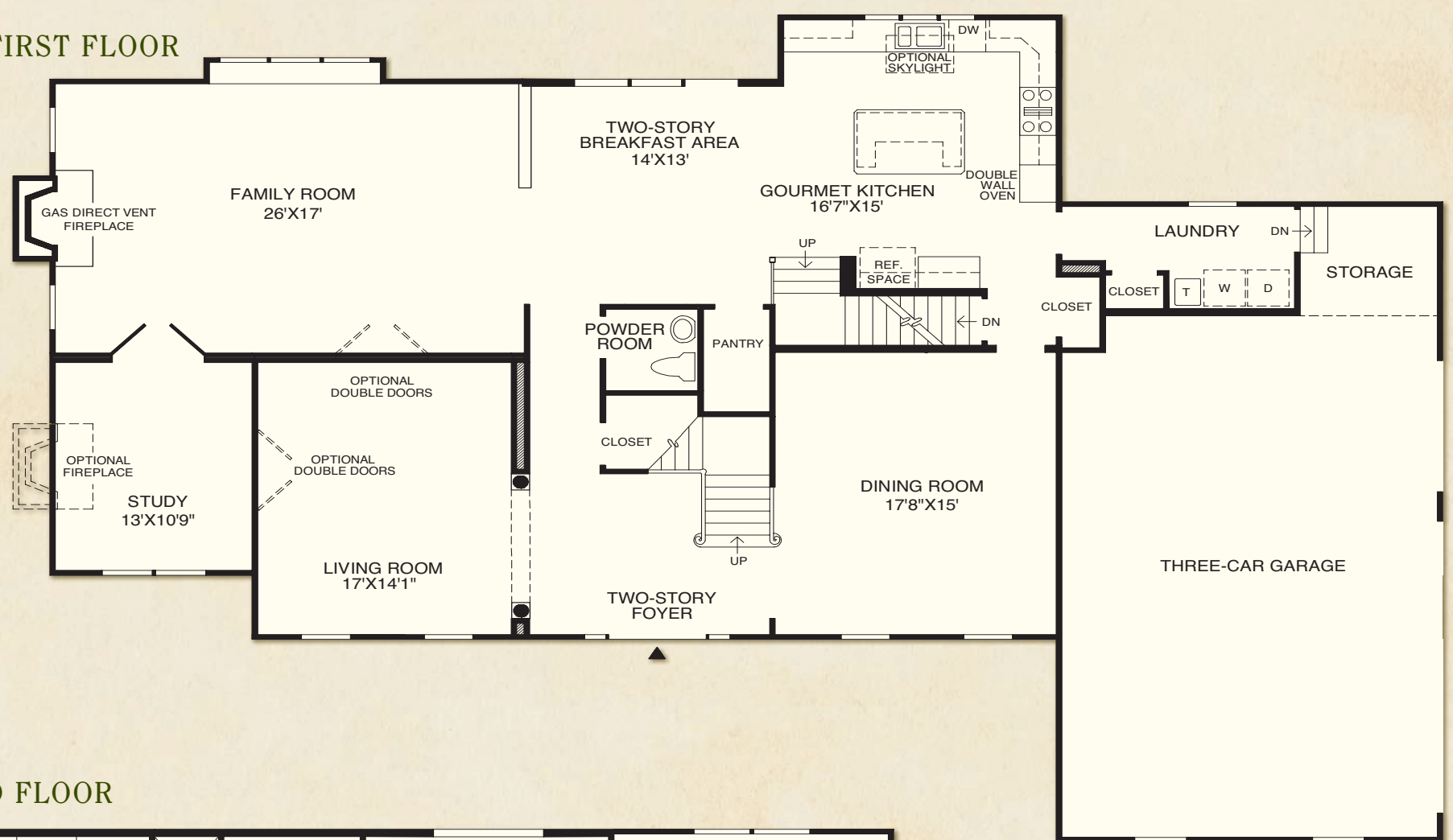
AWARD-WINNING HOME DESIGN

- 4 bedrooms, 3 ½ baths, 3-car garage
- Dramatic turned staircase highlighting the soaring two-story foyer
- Spacious family room with a fireplace that anchors the first-floor study and two-story breakfast area
- Gourmet kitchen with a center island, double wall oven, and an abundance of counter space
- Sumptuous master bedroom suite with a secluded den, 2 large walk-in closets, and master bath with a vaulted ceiling
- Secondary staircase leading to the second-floor bedrooms, showcasing a princess suite with a walk-in closet and private bath
- 9-foot ceilings throughout the first and second floors

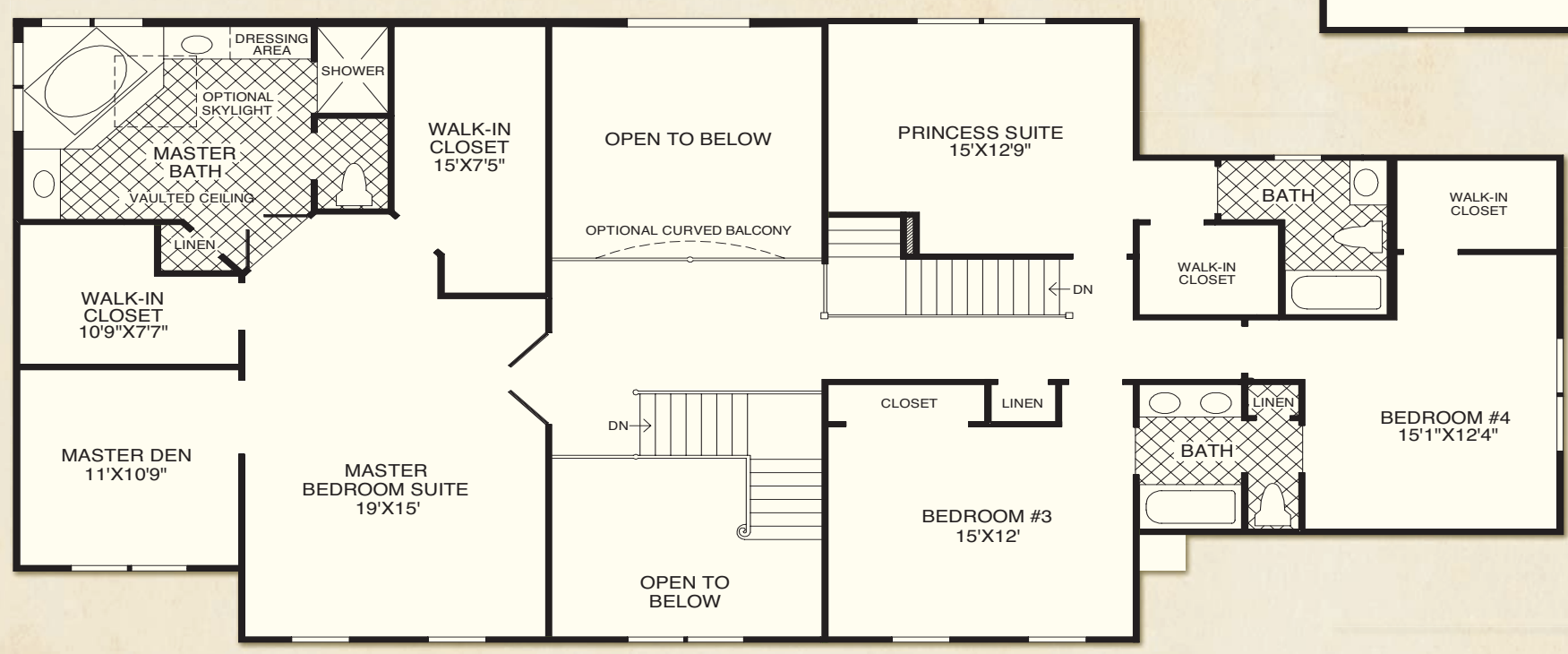


Edgebrook Carolina

FIRST FLOOR



SECOND FLOOR



Designs are subject to field variations due to exact home elevation, options purchased, and location of mechanical and sump pump equipment, which may also vary among individual lots and communities.
 All dimensions are approximate, shown to the maximum dimensions of each room, and are subject to field variation. Dimensions should not be used to calculate room square footage. Some windows, exterior features, ceiling heights, and floorplans may vary with elevations. Some features may vary from community to community. Please consult a Sales Representative for details. Options purchased must be specified in exhibit B.

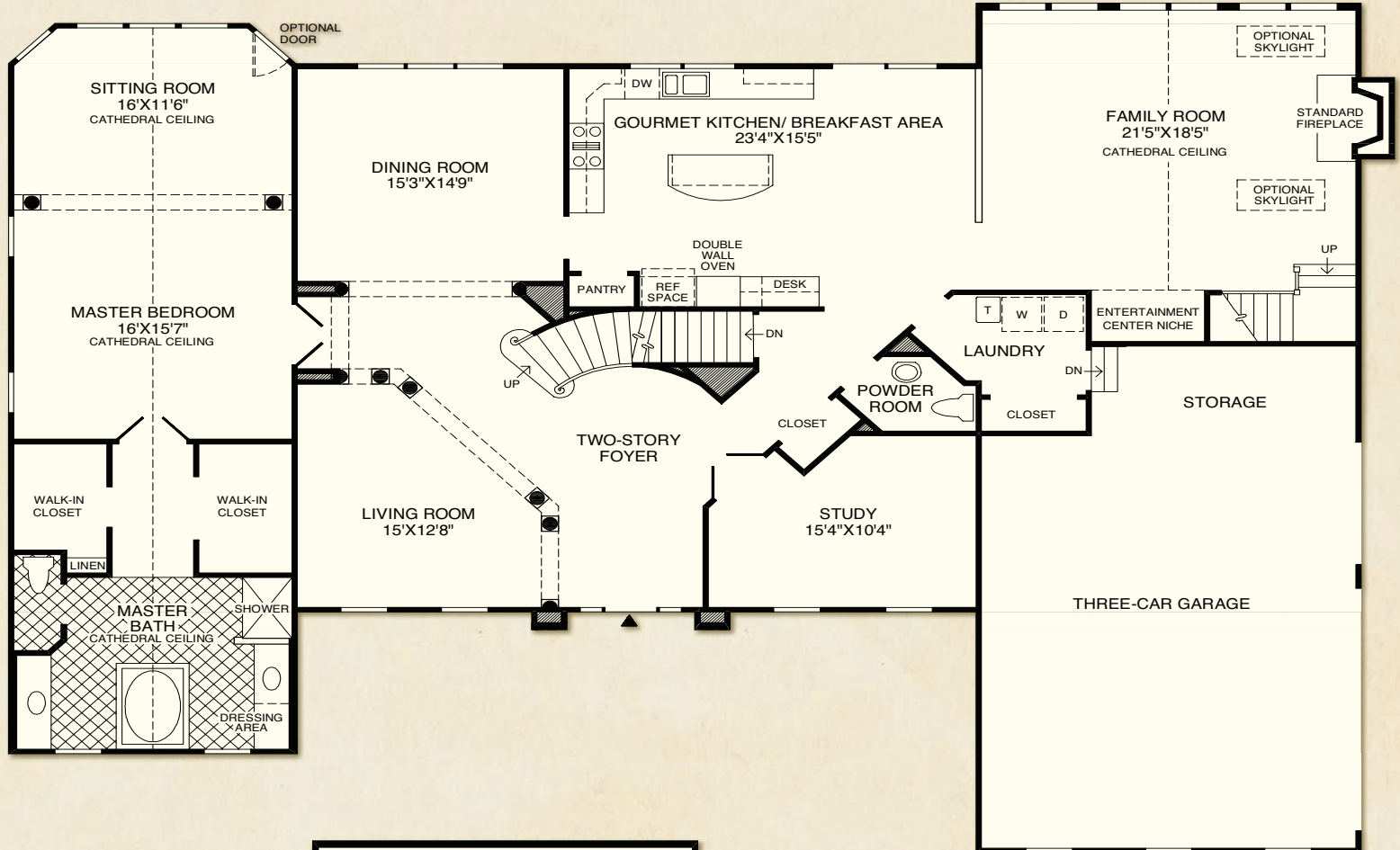
The Cumberland II

- 4 bedrooms, 3 1/2 baths, 3-car garage
- Two-story foyer complemented by an elegant curved staircase that divides the formal living room and study
- Gourmet kitchen with an island countertop and adjoining breakfast area
- Generous family room with a magnificent cathedral ceiling
- Sumptuous first-floor master bedroom suite with a sunny sitting room, 2 large walk-in closets, and master bath including a cathedral ceiling and Roman tub
- Second floor that features an open playroom and princess suite with a private bath
- 9-foot ceiling throughout the first and second floors

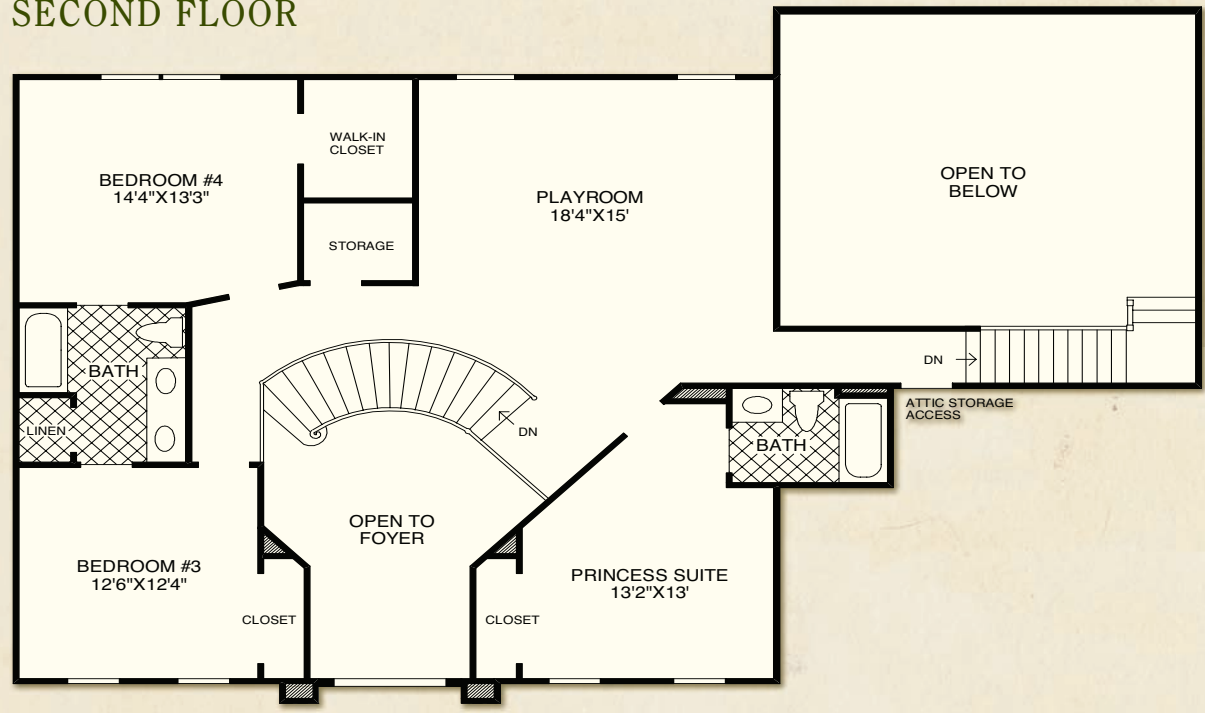


Cumberland Tara

FIRST FLOOR



SECOND FLOOR



Designs are subject to field variations due to exact home elevation, options purchased, and location of mechanical and sump pump equipment, which may also vary among individual lots and communities.

All dimensions are approximate, shown to the maximum dimensions of each room, and are subject to field variation. Dimensions should not be used to calculate room square footage. Some windows, exterior features, ceiling heights, and floorplans may vary with elevations. Some features may vary from community to community. Please consult a Sales Representative for details. Options purchased must be specified in exhibit B.

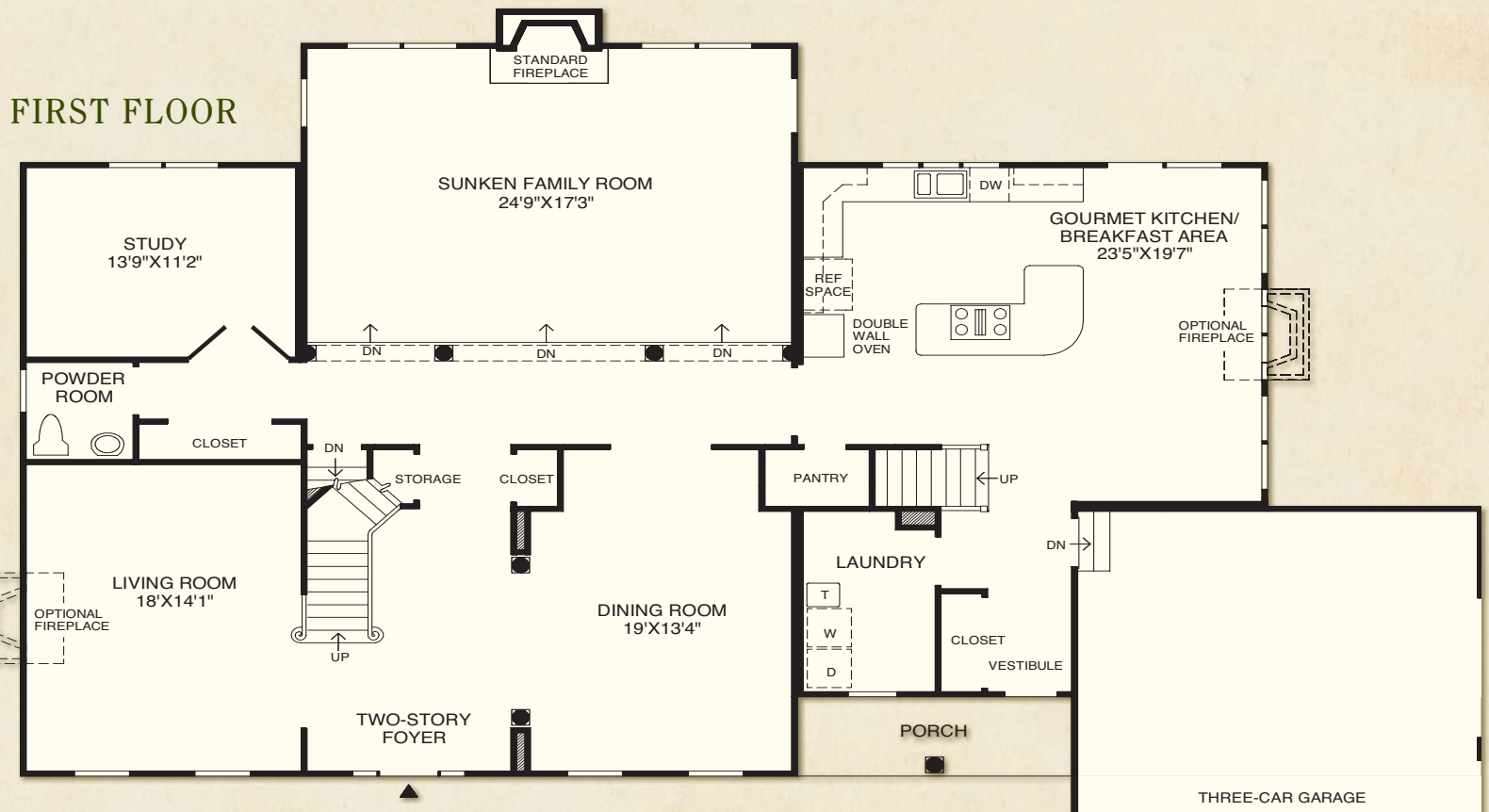
The Coventry

AWARD-WINNING HOME DESIGN

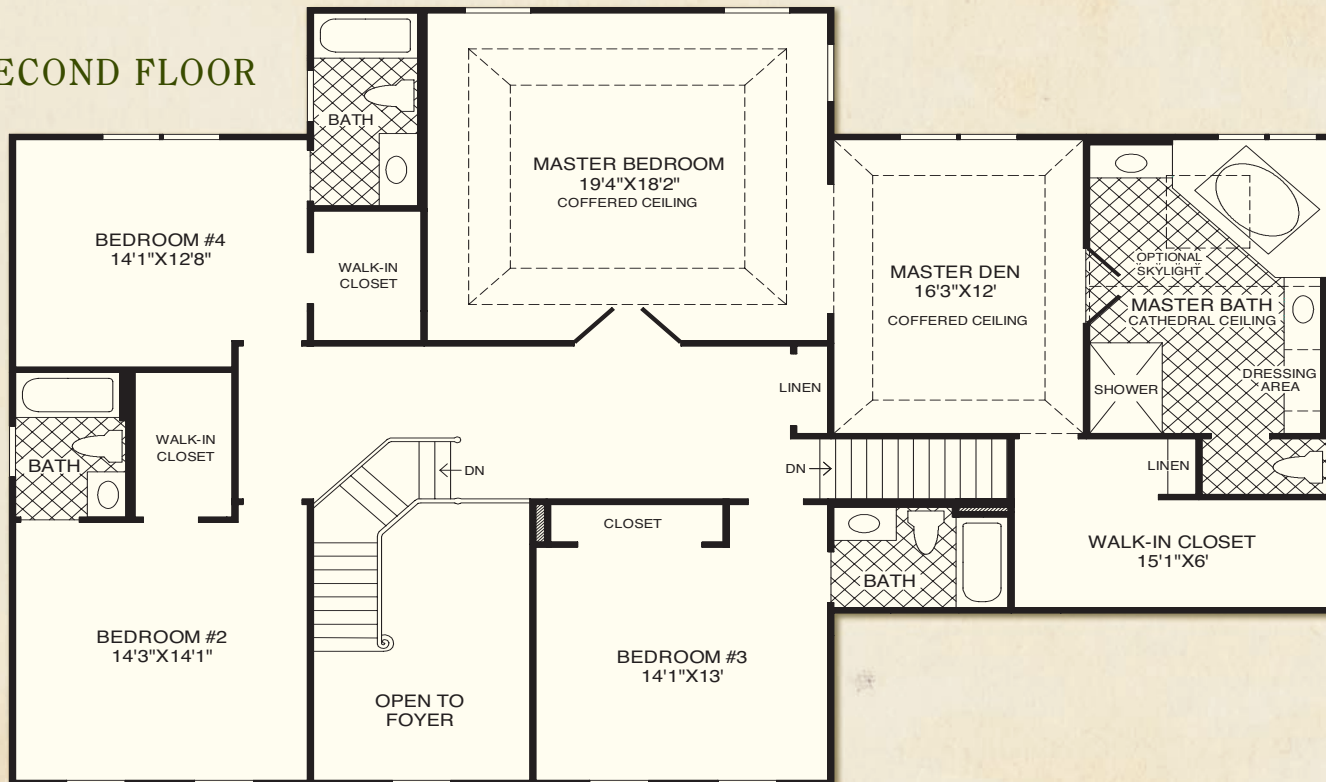
- 4 bedrooms, 4 ½ baths, 3-car garage
- Distinctive double turned staircase that complements the two-story foyer
- Large sunny breakfast area and well-appointed kitchen complete with an island countertop and a pantry
- Expansive master bedroom suite that includes a large den with a coffered ceiling, an impressive walk-in closet, as well as a spacious master bath
- Private first-floor study adjacent to the grand sunken family room
- Secondary front entry from the porch leading to the kitchen and laundry area
- 9-foot ceilings throughout the first and second floors



Coventry Country Manor



SECOND FLOOR



Designs are subject to field variations due to exact home elevation, options purchased, and location of mechanical and sump pump equipment, which may also vary among individual lots and communities.

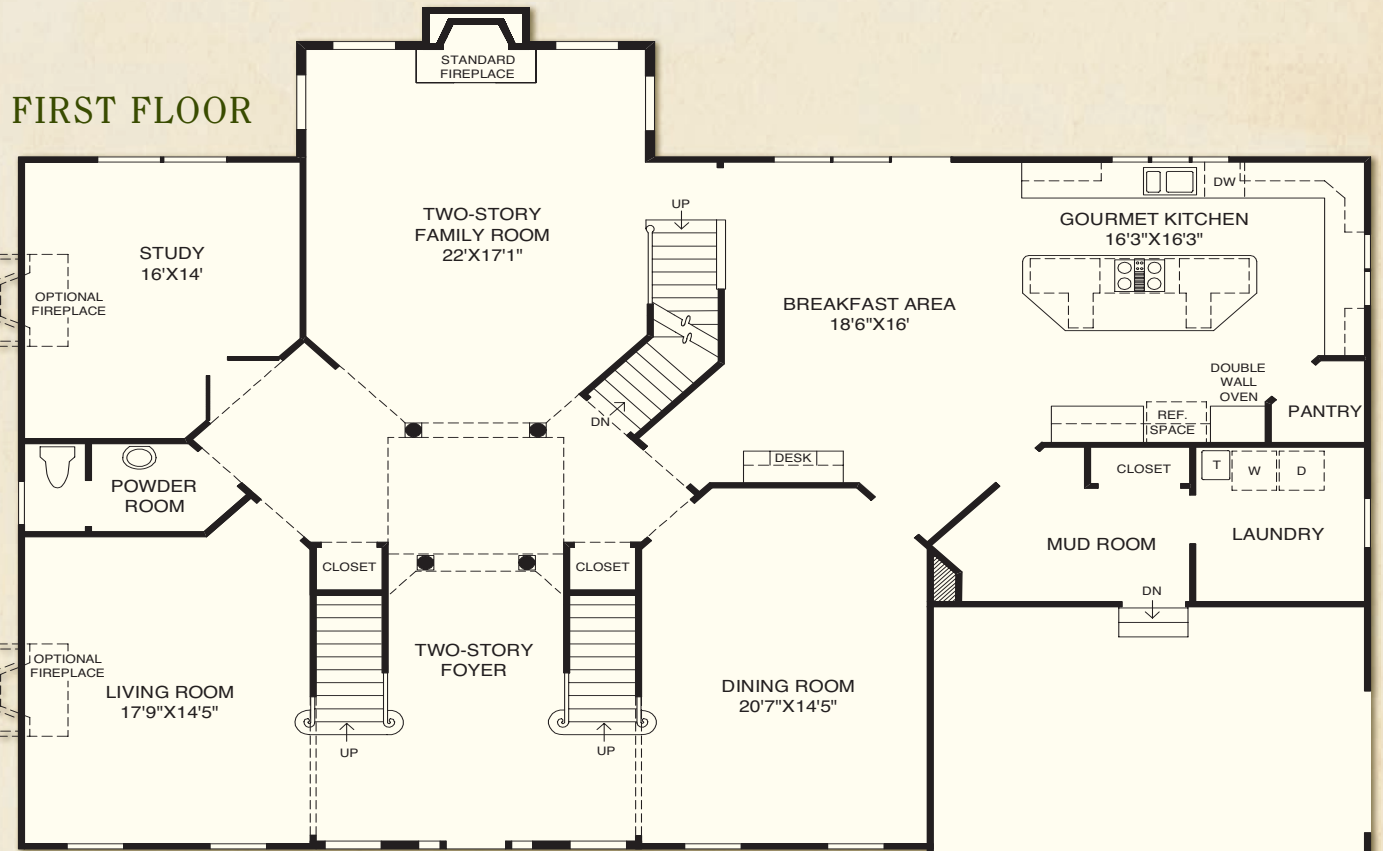
All dimensions are approximate, shown to the maximum dimensions of each room, and are subject to field variation. Dimensions should not be used to calculate room square footage. Some windows, exterior features, ceiling heights, and floorplans may vary with elevations. Some features may vary from community to community. Please consult a Sales Representative for details. Options purchased must be specified in exhibit B.

The Hampton

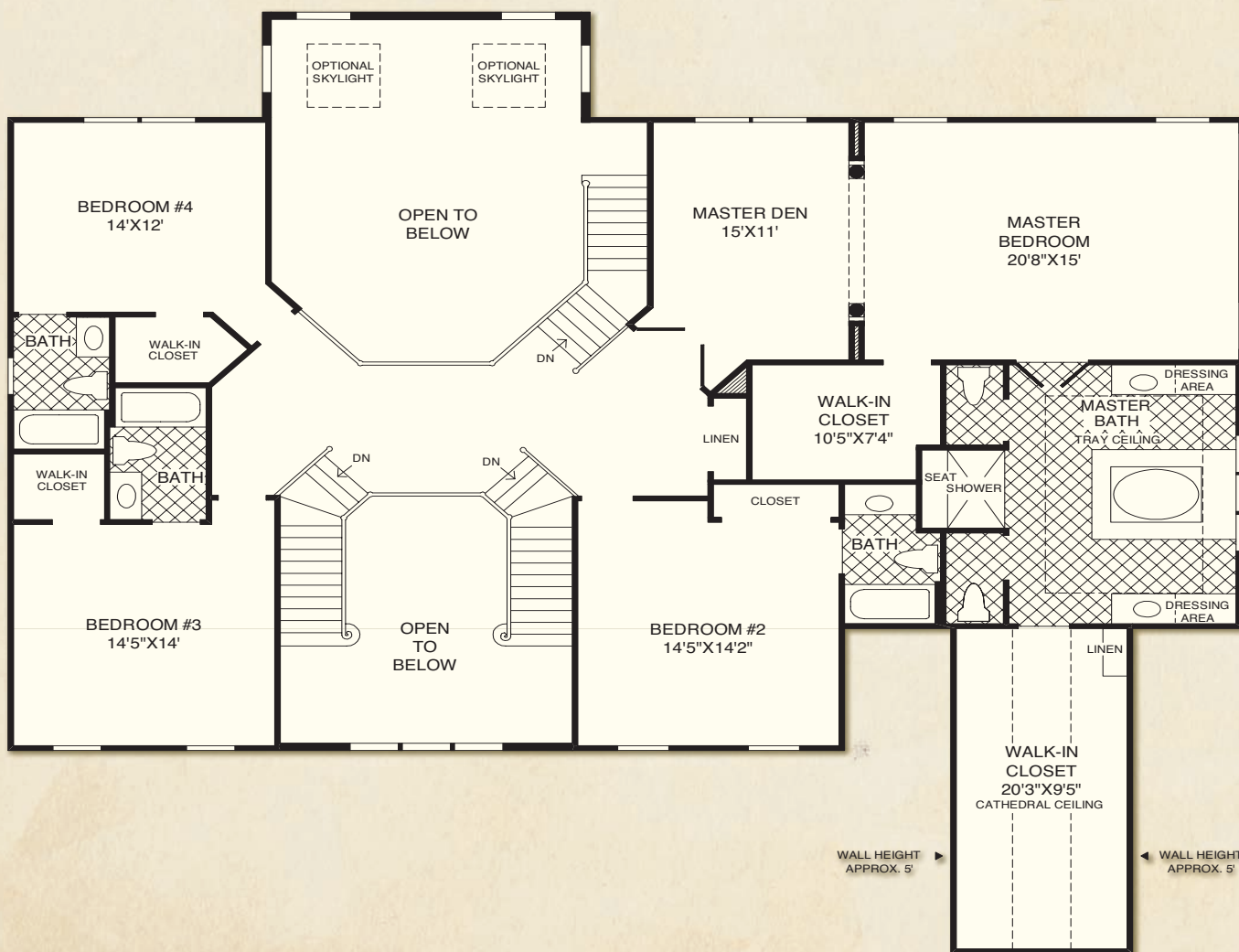
- 4 bedrooms, 4 ½ baths, 3-car garage
- Two-story foyer with a double staircase anchoring the living room and elegant dining room which is conveniently located near the kitchen
- Spacious family room, seen through the foyer, adjacent to a study and divided from the breakfast area by an additional staircase leading to a second-floor balcony
- Well-appointed kitchen including a large center island, walk-in pantry, ample counter space, and an adjoining sizeable breakfast area
- Gracious master bedroom suite with a private den, 2 large walk-in closets, and luxurious master bath with private toilets, a separate shower and vanities, and Roman tub
- 9-foot ceilings throughout the first and second floors



Hampton Manor



SECOND FLOOR



Designs are subject to field variations due to exact home elevation, options purchased, and location of mechanical and sump pump equipment, which may also vary among individual lots and communities.

All dimensions are approximate, shown to the maximum dimensions of each room, and are subject to field variation. Dimensions should not be used to calculate room square footage. Some windows, exterior features, ceiling heights, and floorplans may vary with elevations. Some features may vary from community to community. Please consult a Sales Representative for details. Options purchased must be specified in exhibit B.

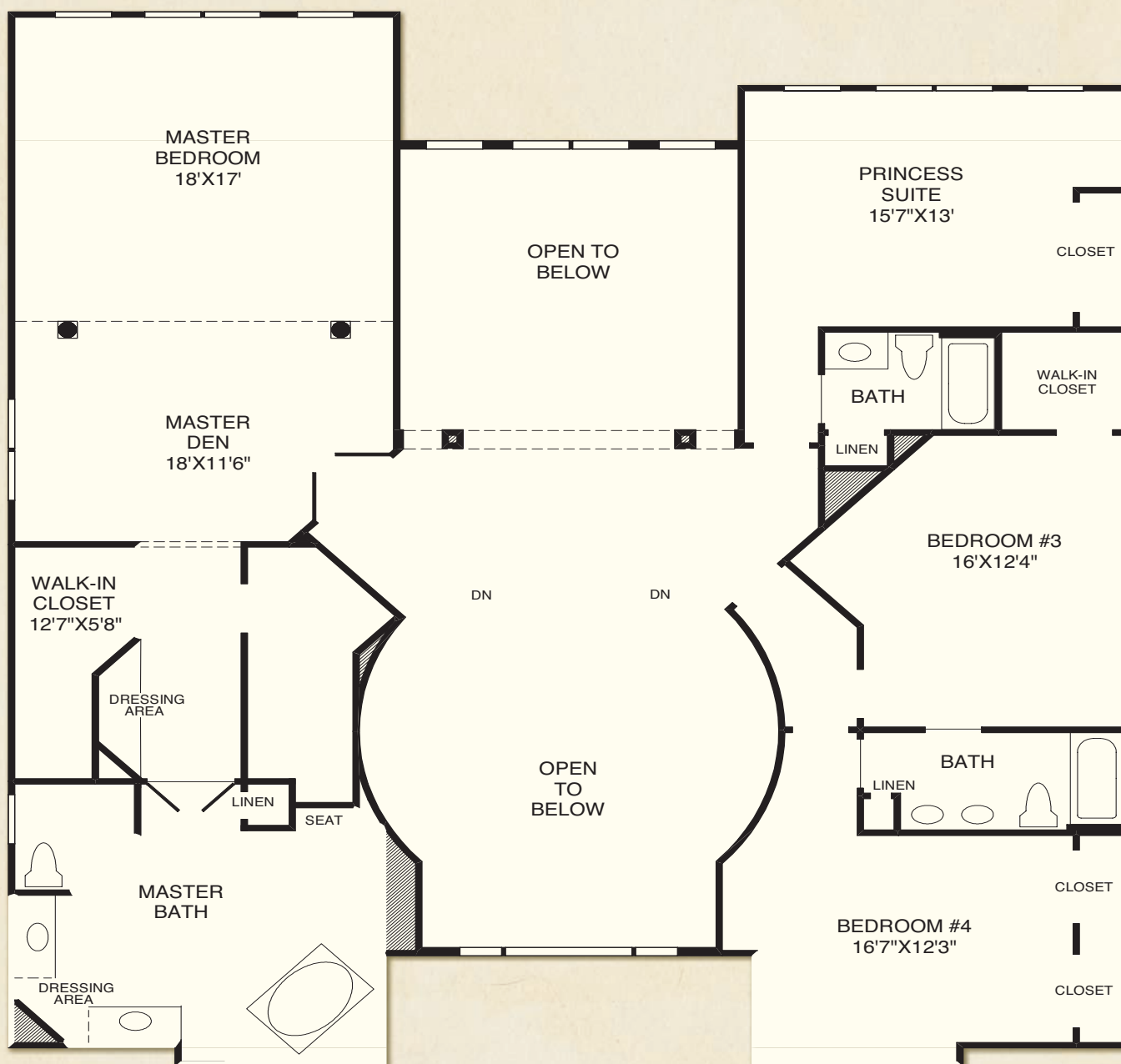
The Malvern

- 5 bedrooms, 4 ½ baths, two 2-car garages
- Two-story foyer with a double curved staircase as the centerpiece looking into the formal two-story dining room with a columned entry and large rear windows
- Formal living room that opens to the dining room for a complete entertaining area
- Generous family room offering a comfortable gathering space with a large fireplace, ample windows, and door to outside
- Kitchen perfectly outfitted for creativity and efficiency with a roomy center work island and an adjacent breakfast area
- Expansive master suite that includes a den, 2 large walk-in closets, dressing area, and an exquisite master bath with a private toilet, separate shower, Roman tub, and dual vanities
- Private study and first-floor bedroom suite
- 10-foot ceilings throughout the first floor and 9-foot ceilings throughout the second floor

FIRST FLOOR



Malvern Heritage

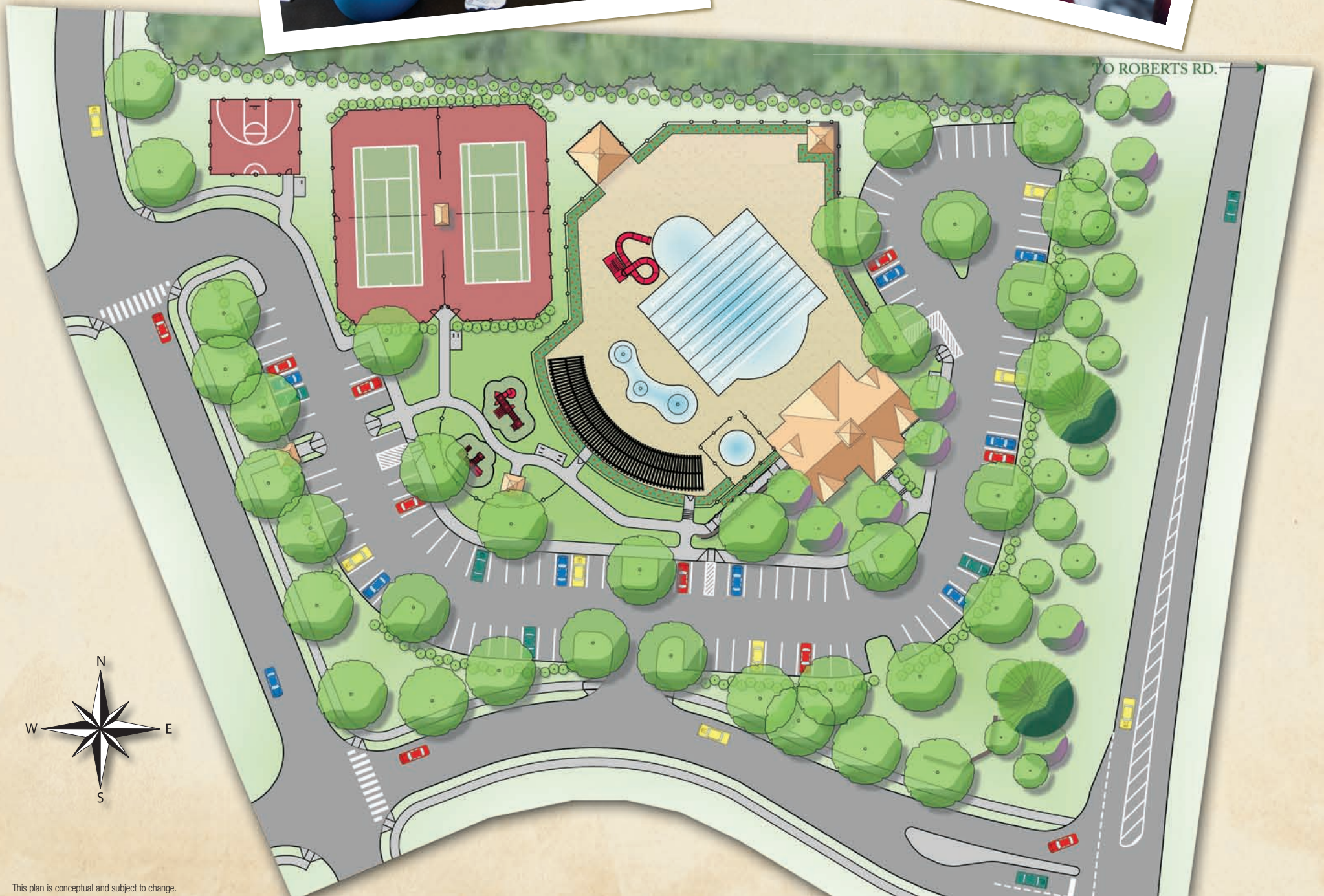


The Heart of the Community

Green Level Crossing is a tranquil place to live and will offer a wide variety of activities — all within the community.

Green Level Crossing will feature scenic paths for leisurely walks or invigorating bike rides. The clubhouse is sure to become the hub for social gatherings, with activities for the whole family: pool parties and swim team practices at the community pool with a twisting slide, and fun play dates for the younger children at the tot lot.

- Clubhouse with State-of-the-Art Fitness Center
- Junior Olympic Pool
- Water Slide and Splash Pool
- Two Tennis Courts
- Half Basketball Court
- Playground Area



OUTSTANDING FEATURES AT NO EXTRA COST

GRACIOUS LIVING

- Close to Research Triangle Park; centrally located with easy expressway access to all areas of the Triangle
- Beautiful rolling, wooded, 1/2-acre home sites
- Grand two-story entrance foyer and dramatic two-story living areas in select home designs
- Finely crafted custom stairway to upper floor
- Expansive master bedroom suite, including cozy den or sitting area, large walk-in closet or his-and-her walk-in closets, and dressing area
- First-floor master bedroom suite available in select home designs
- Walk out basement available on select home sites

DESIGNER INTERIORS WITH LUXURY FEATURES

- Choice of Classique® or six-panel Colonial-style interior doors
- Designer gas fireplace with marble tile surround and custom mantel
- Elegant, oversized, three-piece crown molding in grand entrance foyer, upper hall, and formal living and dining rooms; traditional chair rail in living and dining rooms
- Beautiful hardwood flooring throughout first floor
- Superior Shaw® stain-resistant carpet in wide choice of decorator colors with high-density carpet padding throughout
- Walls of Troy® and other Signature trim in select home designs
- Oversized baseboards and trim throughout first- and second-floor hallways
- Quality ceramic tile flooring in laundry room

MAGNIFICENT KITCHENS

- Beautifully crafted 42" wall cabinets by Yorktown®
- Combination self-cleaning double wall oven with microwave and downdraft gas cooktop
- Convenient organizer desk in select kitchen designs
- Large pantry closet providing extra storage space
- Granite countertops

SUMPTUOUS BATHS

- Lavish master bath with whirlpool tub and separate shower with ceramic shelf
- Vaulted ceiling in master bath in select home designs
- First-floor powder room with elegant pedestal sink
- Kohler® tubs and shower faucets
- Elongated commodes in all baths

CONSTRUCTION HIGHLIGHTS

- Design and construction energy-engineered by Toll Brothers for economical fuel efficiency and air infiltration control
- Economical and high-efficiency two-zone gas heat with central air conditioning
- Distinctive architectural shingles with 30-year warranty
- Brick on all sides of home with painted trim and brick crawl space
- Handsome Peachtree® exterior doors featuring the manufacturer's lifetime warranty
- Low-maintenance, vinyl-clad, low-E windows with grills between the glass
- Steel I-beam girder construction with screwed and glued subfloor for a stabler, quieter floor

CONVENIENCES

- Each home professionally cleaned prior to settlement
- Convenient pre-wiring for telephone and cable television
- Security system included*
- Laundry center with sink, wall cabinets, and washer/dryer hookup
- Ceiling fan/light pre-wire in master bedroom and family room; overhead lights in secondary bedrooms
- 200-amp electrical service
- Frost-free exterior hose connections at front and rear of home
- Exterior weatherproof electrical outlets at front and rear of home
- Direct-wired smoke detectors with battery backup

LANDSCAPING AND IMPROVEMENTS

- Beautifully landscaped entry boulevard; quiet cul-de-sac streets
- Convenient underground utilities, including water, sewer, and natural gas
- Attractive landscaping package with trees, shrubs, and sodded yard
- Approximately 168-square-foot wood fairway deck with brick piers

QUALITY ASSURANCE AND CUSTOMER CARE

Our quality program starts at design inception with the creation of precise construction drawings specifying high-quality materials, all the way through to on-site supervision by experienced project managers and construction managers.

- First home buyer inspection 5 – 7 days prior to settlement
- Ten-year limited warranty program

CUSTOMIZING SERVICES

Pre-priced options permitting a full range of additional customizing to fit your particular needs: sunrooms, cathedral ceilings, lofts, additional fireplaces . . . and many more!

*Monitoring contract required. Please see sales manager for details. In the interest of continuous improvement, Toll Brothers reserves the right to modify or change floorplans, materials, and features without prior notice. Such changes may not always be reflected in our models. Your community's sales agreement will contain all current information. This is not an offering where prohibited by law.



NOTE: All dimensions are approximate. Dimensions are calculated to the curb or edge of paving. Actual deed dimensions and areas will be to the street right of way. This plan does not identify assessments, stormwater management areas or restrictions. Wooded areas and landscaping shown are for illustrative purposes only. Actual quantity and locations may vary. Please consult with your Toll Bros. Sales Representative for additional information. WGLCO-2284-RD-111307



7017 Ashley Rose Drive
Cary, NC 27519



7017 Ashley Rose Drive
Cary, NC 27519
(919) 466-9300
GreenLevelCrossing.com
Pricing from the mid-\$600,000s
Sales Office Open Daily!
Sunday and Monday 1 p.m. – 6 p.m. and
Tuesday to Saturday 10 a.m. – 6 p.m.

Toll Brothers
America's Luxury Home Builder®
TollBrothers.com

Directions from I-40: Take 540 West to Exit 66 (55 East) and proceed 3 ⁹/₁₀ mi. to Green Level West Rd. Turn right and proceed 2 mi. to Green Level Church Rd. Turn right (north) and proceed ⁸/₁₀ mi. to Ashley Rose Dr. Turn left and the designer-decorated Hampton Manor model home is on the left.

©2008 by Toll Brothers, Inc. All copy, plans, and artwork contained in or represented by this brochure and its enclosures are the sole property of Toll Brothers, Inc. Any reproduction of them or other use without the written permission of Toll Brothers, Inc. is strictly prohibited. Photos are images only and should not be relied upon to confirm applicable features. All information is deemed accurate at press time. This is not an offering where prohibited by law.

