

# Townhouse-E

2 Bedroom / 2.5 Bath  
Upper and Lower Levels  
1,318 SQ FT

### Building Amenities

- Concierge service
- Fully equipped fitness center
- Private, sub-level parking
- Private rooftop cabanas for sale
- Common courtyard
- 421-a Tax Abatement

### Luxurious Residences

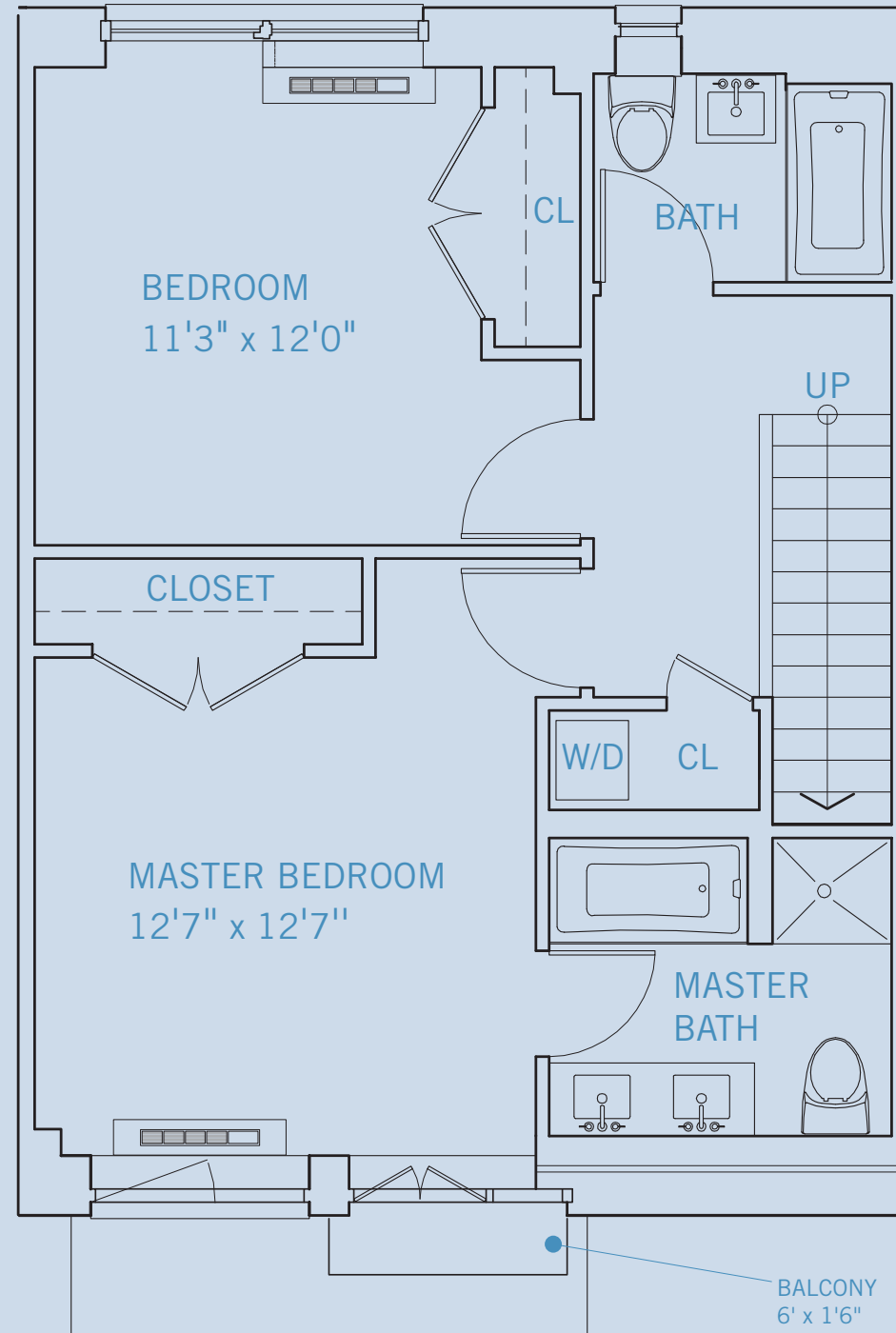
- Hardwood floors throughout
- Floor-ceiling-windows
- Eurotech® washer/dryers

### Extraordinary Kitchens

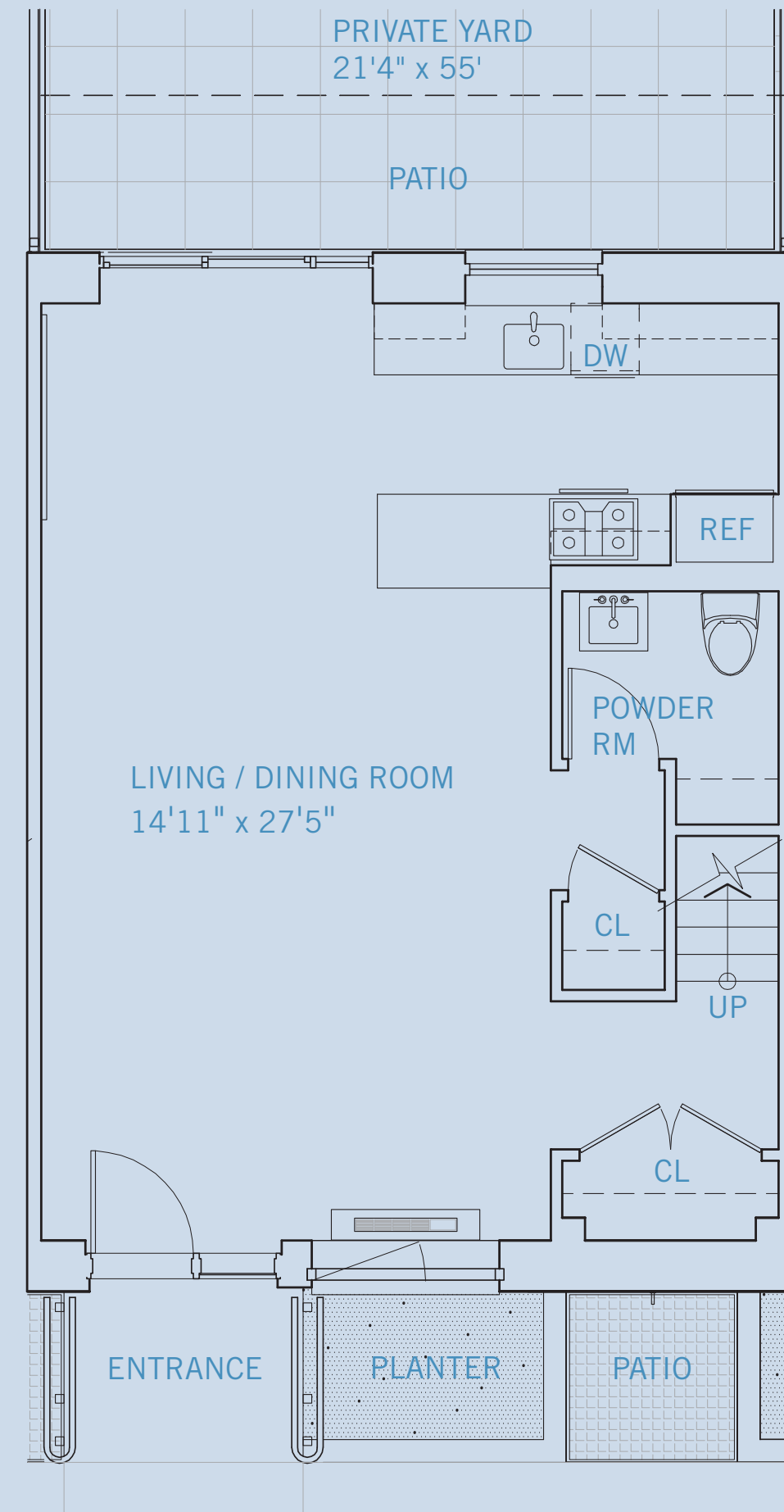
- Fine wood cabinetry with elongated stainless steel hardware
- Basaltina stone counters
- Under cabinet lighting
- GE® garbage disposals
- Stainless steel appliances:
  - Sub Zero® refrigerators
  - Bosch® dishwashers
  - Thermador® ovens and cooktops

### Opulent Baths

- Limestone double vanities
- Dark wood cabinetry
- Kohler® fixtures
- Soaking tub
- Separate frameless glass shower stall



TOWNHOUSE-E UPPER LEVEL



TOWNHOUSE-E LOWER LEVEL

## Notes

---



---



---



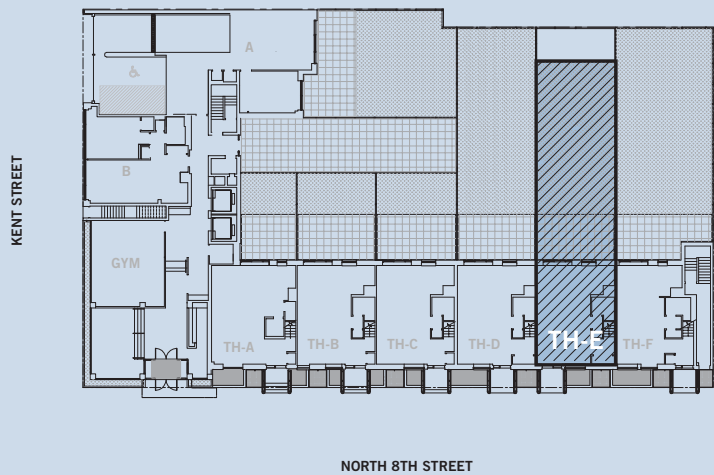
---



---



---



# NORTH8

The Unit Layout, square footage and dimensions are approximate and subject to normal construction variances and tolerances. Square footages exceed the usable floor area. This floor plan is based on construction drawings. Minor inaccuracies between this floor plan and the actual Unit layout when built, will not excuse a Purchaser from completing the purchase of a Unit without abatement in price and without recourse against the Sponsor. Sponsor reserves the right to make changes in accordance with the Offering Plan. The complete offering terms are in an offering plan available from sponsor. File No. CD06-0052

