

*Regency*  
at  
  
*Brier Creek*  
Country Club®



*Regency*  
at  
  
*Brier Creek*  
Country Club®



*Welcome Home to . . .*

Now is your time to enjoy the finest moments of life. In Regency at Brier Creek Country Club, you can indulge in a carefree lifestyle of luxury, set amid a beautifully wooded landscape. A world of amenities close to home ensures that each moment will be rich and diverse, and filled with culture, fine dining, fabulous shopping, and a variety of recreational activities.



The good life awaits you at  
**Regency at Brier Creek Country Club!**

At Brier Creek Country Club, you will enjoy a spectacular country club setting with luxurious amenities, including an 18-hole Arnold Palmer Signature Golf Course, a swim and tennis pavilion, a state-of-the-art fitness center, over 40,000 square feet of luxurious clubhouse space, miles of walking paths, greenway trails, and much more! You will also have a variety of fun-filled activities to choose from and endless opportunities to make new friends in the numerous clubs and organizations, community mixers, and many other special events scheduled throughout the year.



**A World of Possibilities . . . in a Convenient Location!**

Just minutes beyond the entrance to your neighborhood, you'll find the world at your feet — with excellent shopping and a wide choice of cultural events close to home! Regency at Brier Creek Country Club is only 2 minutes from I-540, I-40, and Highway 70, offering fast access to anywhere in the Triangle. Traveling to downtown Raleigh, Cary, and Durham is a pleasant 15-minute drive. Raleigh-Durham International Airport can be reached in just 5 minutes. Research Triangle Park (RTP), the nation's largest research park, is an easy 5-minute commute. Regency at Brier Creek Country Club is close to the Carolina beaches, just 2 hours away, and the Blue Ridge Mountains, less than 4 hours away.



## The Best in Community Services

Excellent medical facilities are just across the street from Regency at Brier Creek Country Club. WakeMed Brier Creek Medical Park, a state-of-the-art medical office complex, and Duke Medical, a family medical clinic, both offer comprehensive medical treatment within walking distance. In addition, hospitals and medical care facilities such as REX Hospital, WakeMed Center, Raleigh Community Hospital, and WakeMed Cary Hospital are comfortably close. And the University of North Carolina Hospitals, Duke University Medical Center, The North Carolina Jaycee Burn Center, and the Durham VA Medical Center, acclaimed worldwide for research and treatment, are very accessible.

Also serving the community are houses of worship representing almost all faiths.



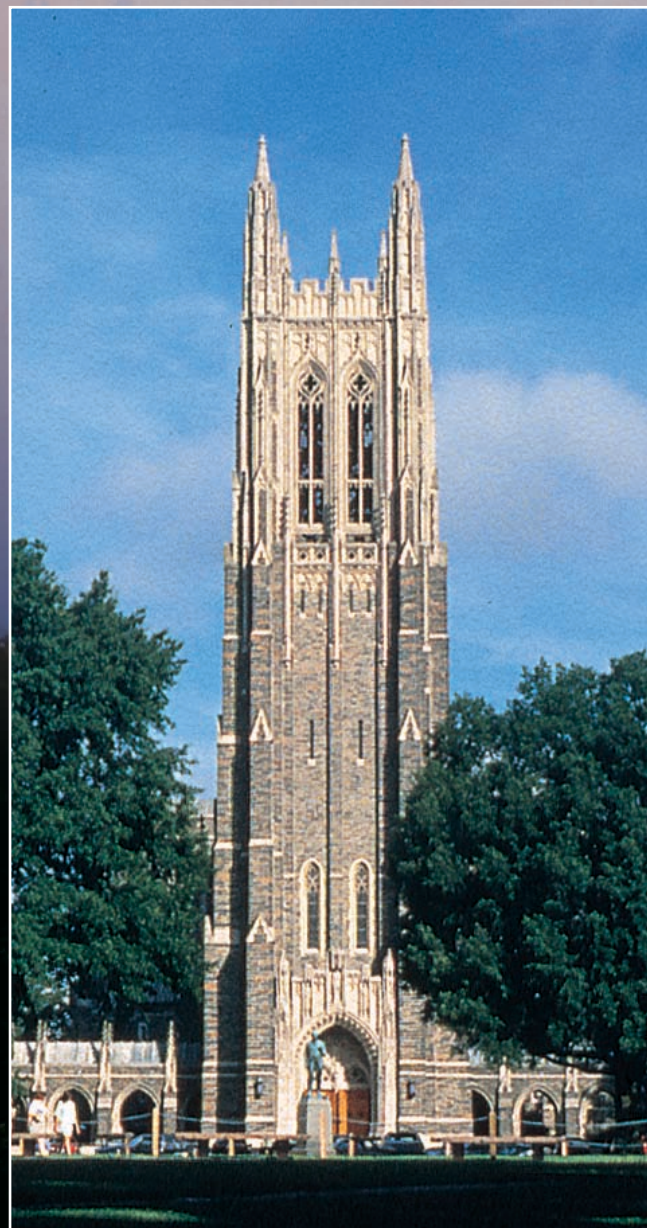
## An Area of Unequaled Beauty

In Regency at Brier Creek Country Club, your home is a private haven in a paradise found just minutes from any convenience you may need. In addition, the homes afford an uncommon standard of excellence due to their superior design and quality craftsmanship. You will live and entertain with pride in Regency at Brier Creek Country Club.

*Regency*  
at  
  
*Brier Creek*  
Country Club®

## World-Class Shopping at Your Doorstep!

Regency at Brier Creek Country Club is close to all types of shopping, from quaint antique and specialty boutiques to modern malls. For convenient one-stop shopping, Brier Creek Commons and Brierdale Shopping Center are both within walking distance and include over 1 million square feet of shopping, dining, and retail venues. In charming downtown Cary and Apex, you will discover unique stores where you can count on receiving personal service from shopkeepers who remember you by name. The award-winning Streets at Southpoint mall is just 10 minutes from Regency at Brier Creek Country Club and is anchored by Nordstrom, Macy's, and Hudson Belk, with over 180 retail stores, fine restaurants, and a cinema complex. The fabulous Crabtree Valley Mall and Triangle Town Center are both within 15 minutes and offer more than 300 fine specialty shops.



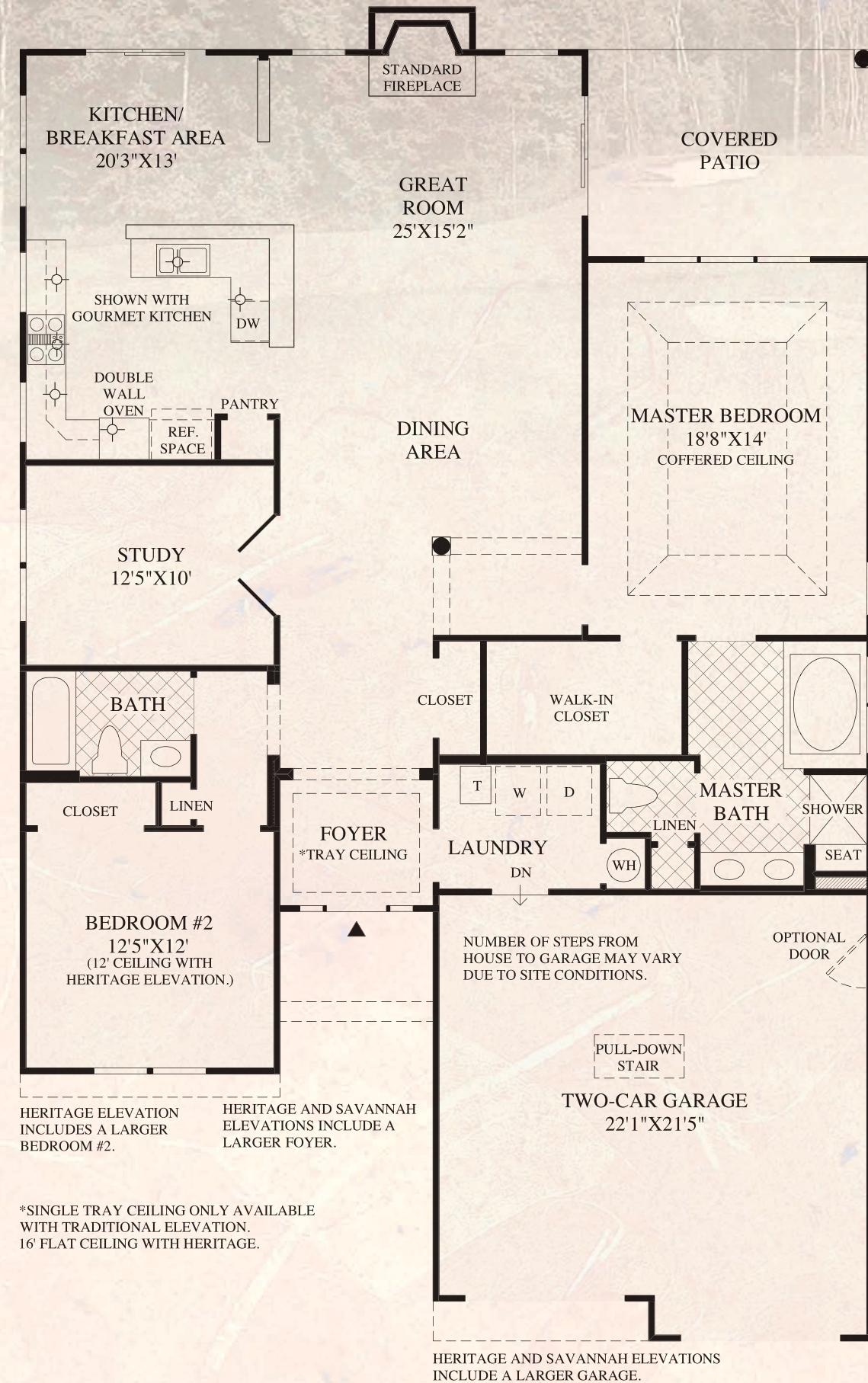


Shown: Savannah Exterior Design

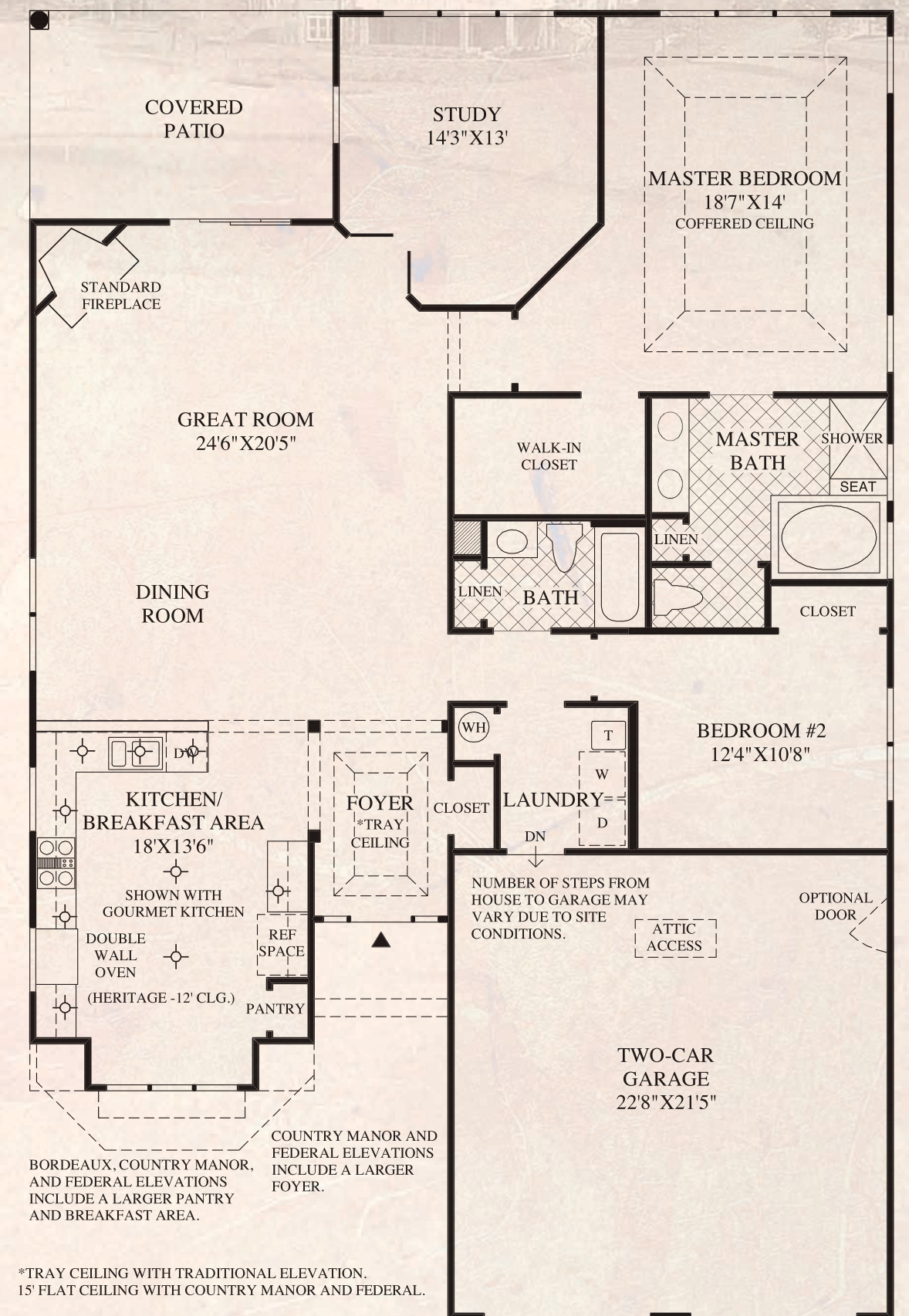


Shown: Federal Exterior Design

# Corsica



# San Remo

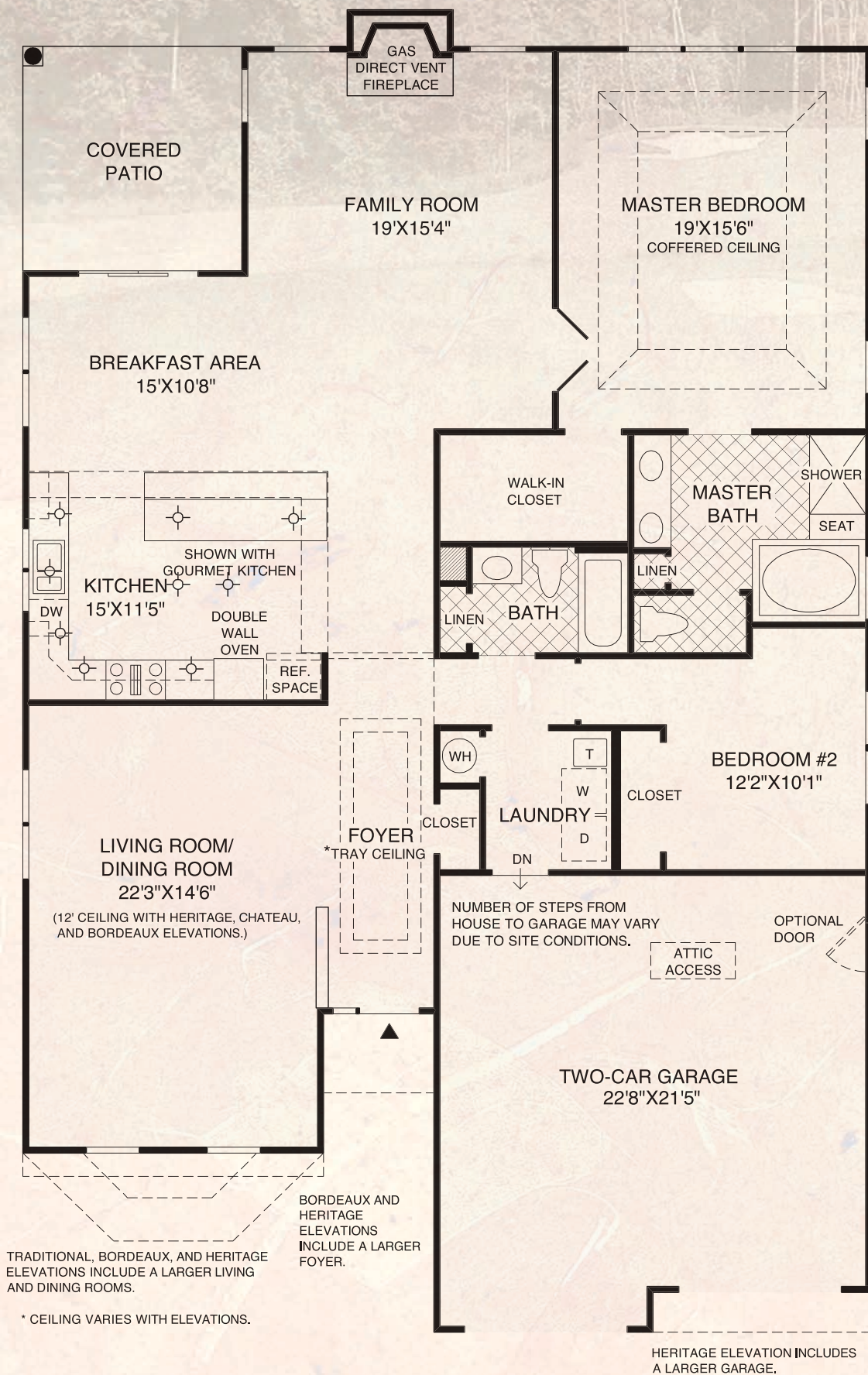


Thousands of Options to Customize Your Home



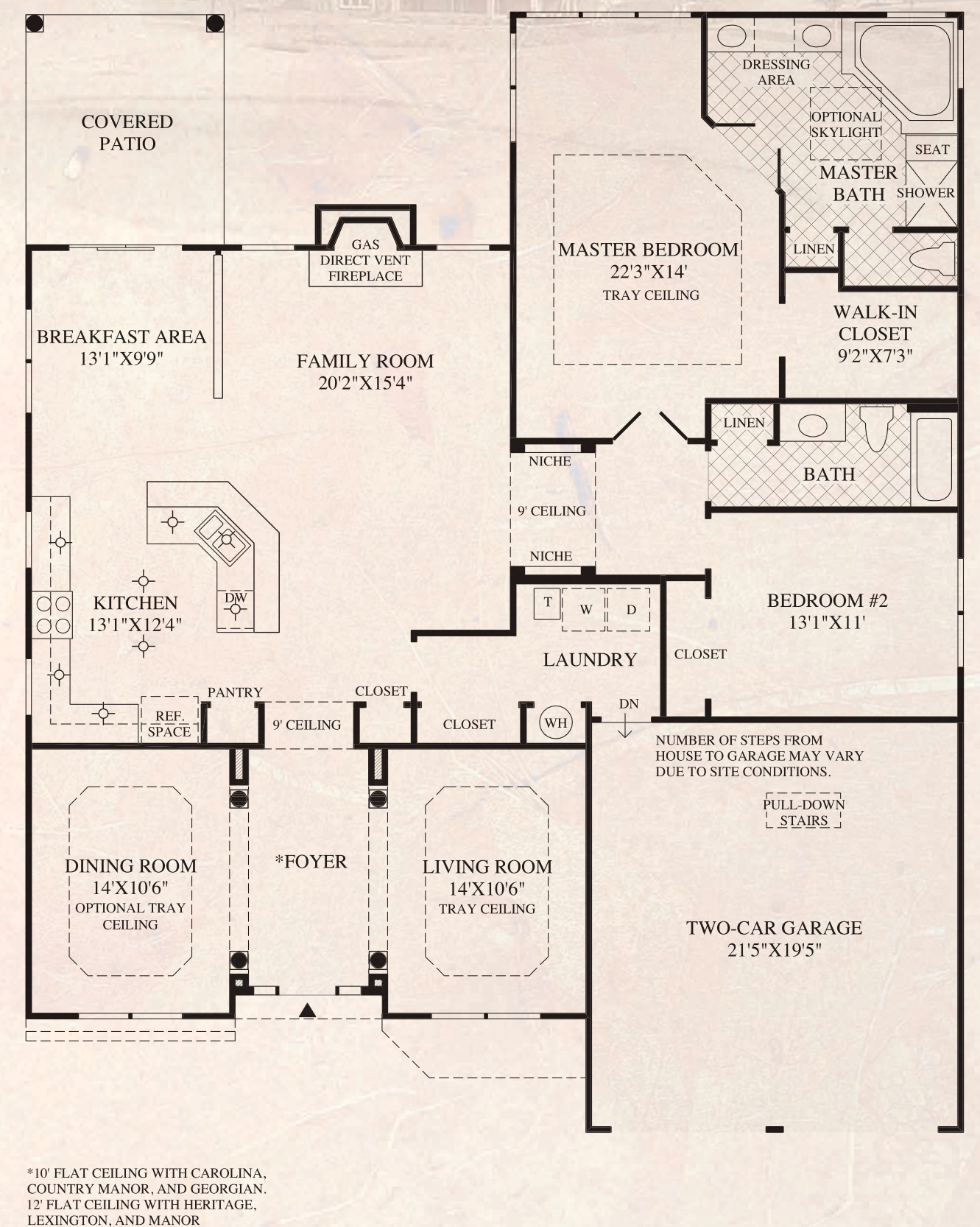
Shown: Bordeaux Exterior Design

# Monaco



Shown: Carolina Exterior Design

# Tradition

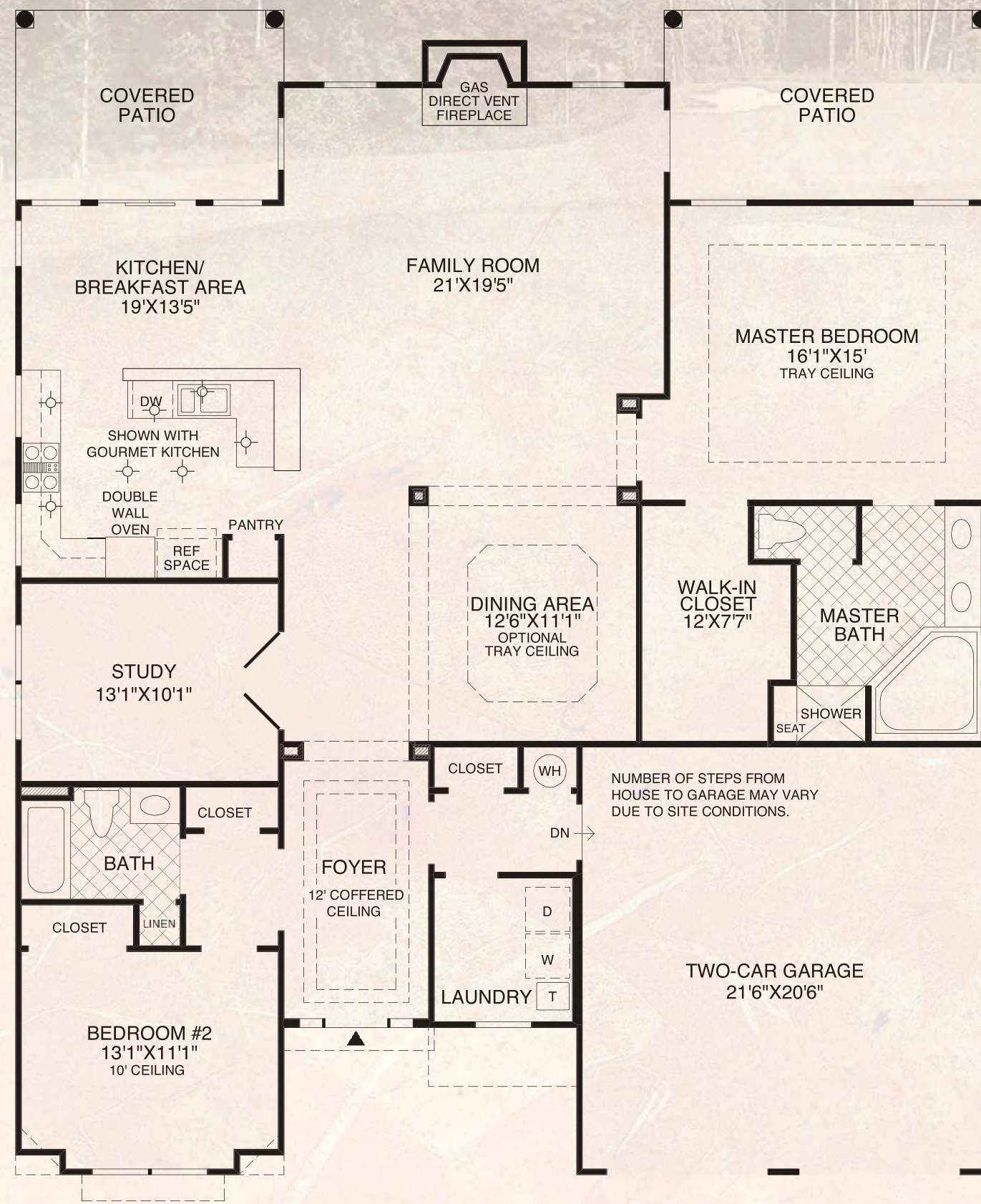


**Walkout  
Basements  
Available**



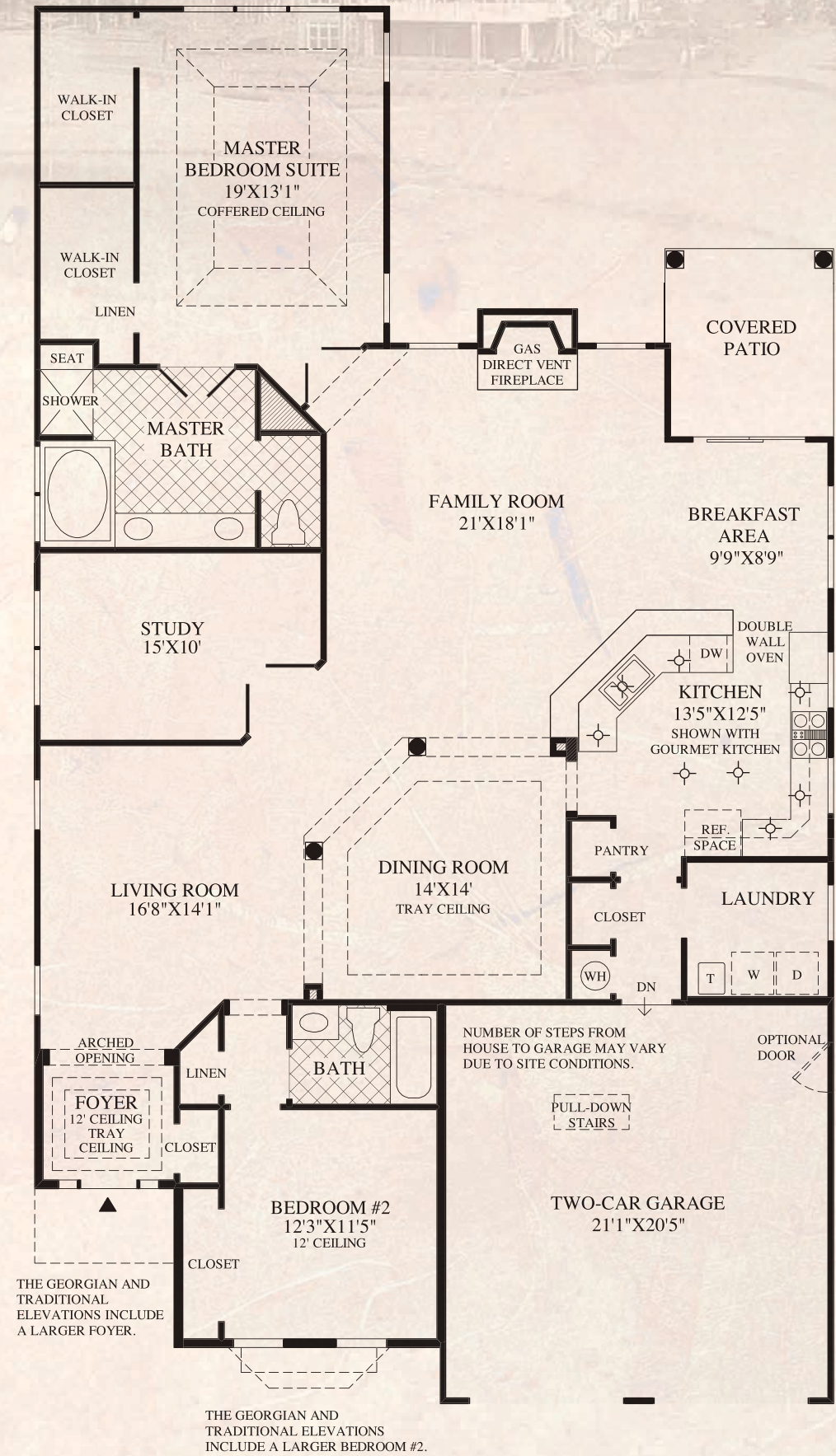
Shown: Carolina Exterior Design

# Bayhill



Shown: Lexington Exterior Design

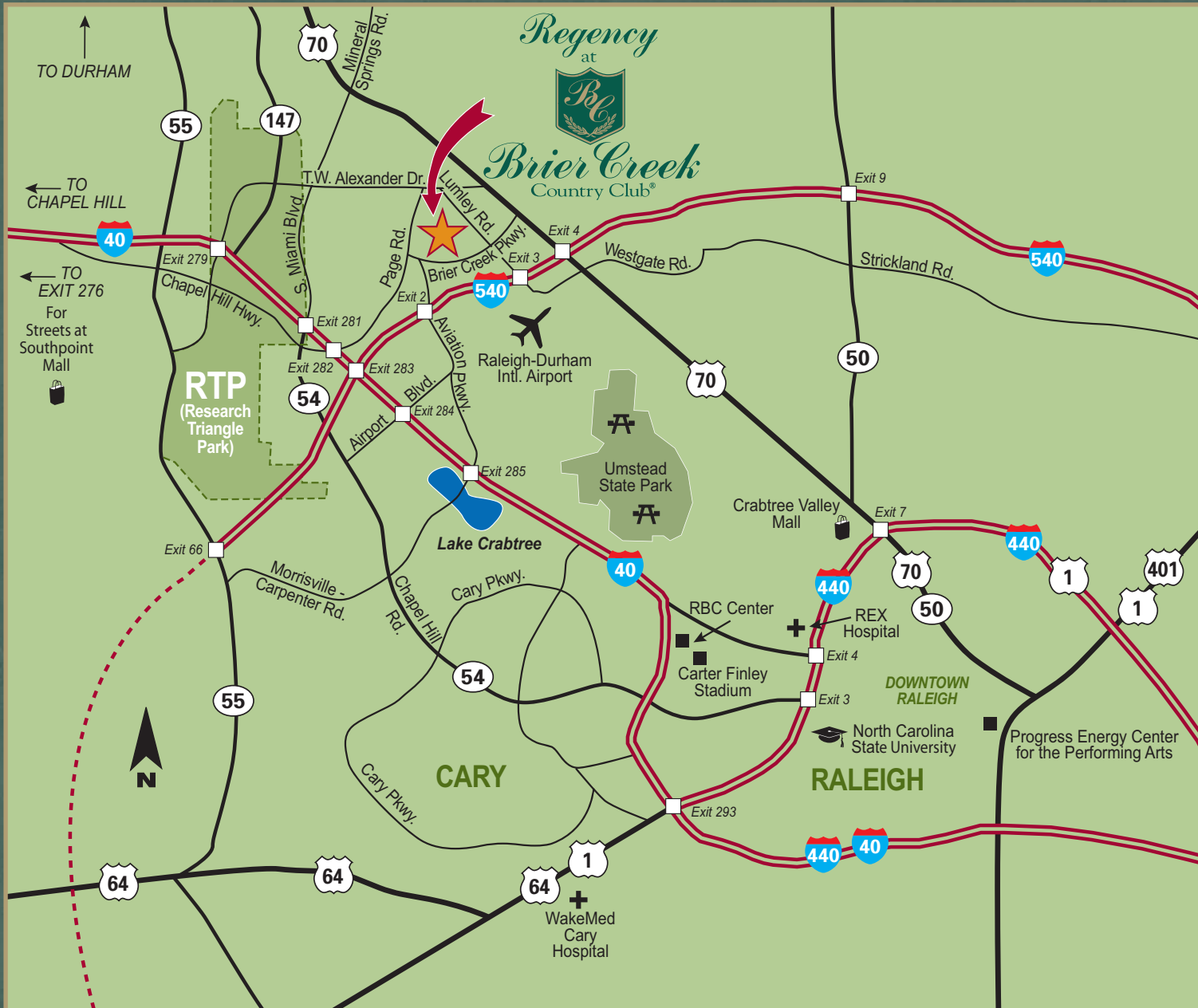
# St. Raphael



All dimensions are approximate, shown to the maximum dimensions of each room, and are subject to field variation. Dimensions should not be used to calculate room square footage. Some windows, exterior features, ceiling heights, and floorplans may vary with elevations. Some features may also vary from community to community. Please consult a Sales Representative for details.

Regency  
at  
  
Brier Creek  
Country Club®

10404 Lumley Road, Raleigh, NC 27617 • (919) 206-TOLL (8655) • [BrierCreekCountryClub.com](http://BrierCreekCountryClub.com)



## Call or Visit Today!

Pricing from the \$300,000s

(919) 206-TOLL (8655) • [BrierCreekCountryClub.com](http://BrierCreekCountryClub.com)

Open Every Day: Sunday and Monday 1 p.m. to 6 p.m. and Tuesday - Saturday 10 a.m. to 6 p.m.

## Directions:

Take I-540 to Exit 3, Lumley Road. Turn left and proceed ¼ mile to Brier Creek Country Club and Visitors Center on the right.

©2008 by Toll Brothers, Inc. All copy, plans, and artwork contained in or represented by this brochure and its enclosures are the sole property of Toll Brothers, Inc. Any reproduction of them or other use without the written permission of Toll Brothers, Inc. is strictly prohibited. The floorplans and exterior designs of Toll Brothers homes are copyrighted. We have enforced, and will continue to enforce, our federal copyrights to protect the investment of our home buyers. Artist rendering for illustrative purposes only. Any amenities, structures, and dimensions, as well as actual landscaping, and parking facilities may vary and are subject to change. This is not an offering where prohibited by law. BRRY-15443-15443 11/08

**Toll Brothers**  
America's Luxury Home Builder®