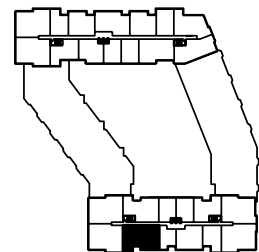




1,939 SF  
 3 BEDROOMS, 3 BATHS, DEN, BALCONY  
 4 UNITS  
 TYPICAL FOR UNITS 908, 1008, 1108, 1208

KEY PLAN - FLOORS 9-12



HUDSON RIVER

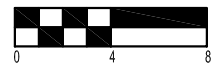
PERKINS EASTMAN ARCHITECTS © 2006  
 NO UNAUTHORIZED USE, DISTRIBUTION OR DUPLICATION PERMITTED WITHOUT THE EXPRESS WRITTEN CONSENT OF PERKINS EASTMAN ARCHITECTS PC

NOTE: THESE FLOORPLANS ARE ARTIST'S RENDERINGS, CONCEPTUAL ONLY, AND BASED ON CURRENT DEVELOPMENT PLANS WHICH ARE SUBJECT TO CHANGE WITHOUT NOTICE. SQUARE FOOTAGE AND DIMENSIONS ARE APPROXIMATE AND MAY VARY IN ACTUAL BUILDING. NO GUARANTEE IS MADE THAT THE FACILITIES OR FEATURES DEPICTED WILL BE BUILT, OR IF BUILT, WILL BE THE SAME TYPE, SIZE, OR NATURE DEPICTED.

# MAXWELL PLACE

## ON THE HUDSON

1125 MAXWELL LANE . HOBOKEN . NJ . 07302



### UNIT 3+BG

ISSUE DATE: JANUARY 31, 2007  
 JOB NO. 20760.00

**DRAFT**