

# THE ASH

The two-story foyer opens to the spacious dining room .

The kitchen is well-equipped with plenty of cabinets and ample counter space and is adjoined by a well lit breakfast area.

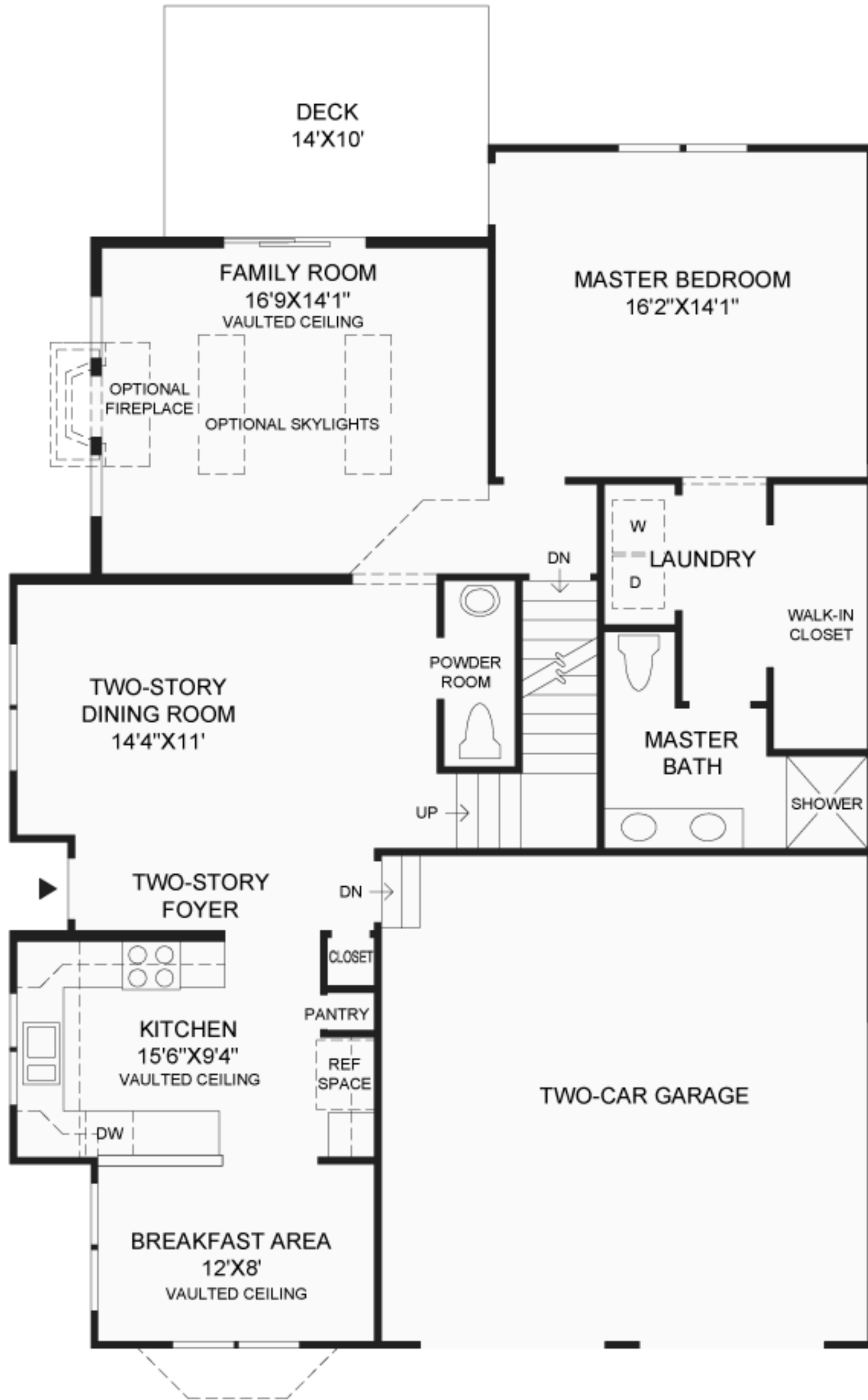
The large family room has amazing decorative possibilities.

The master bedroom suite includes a large walk-in closet, and a master bath with a shower and double vanity.

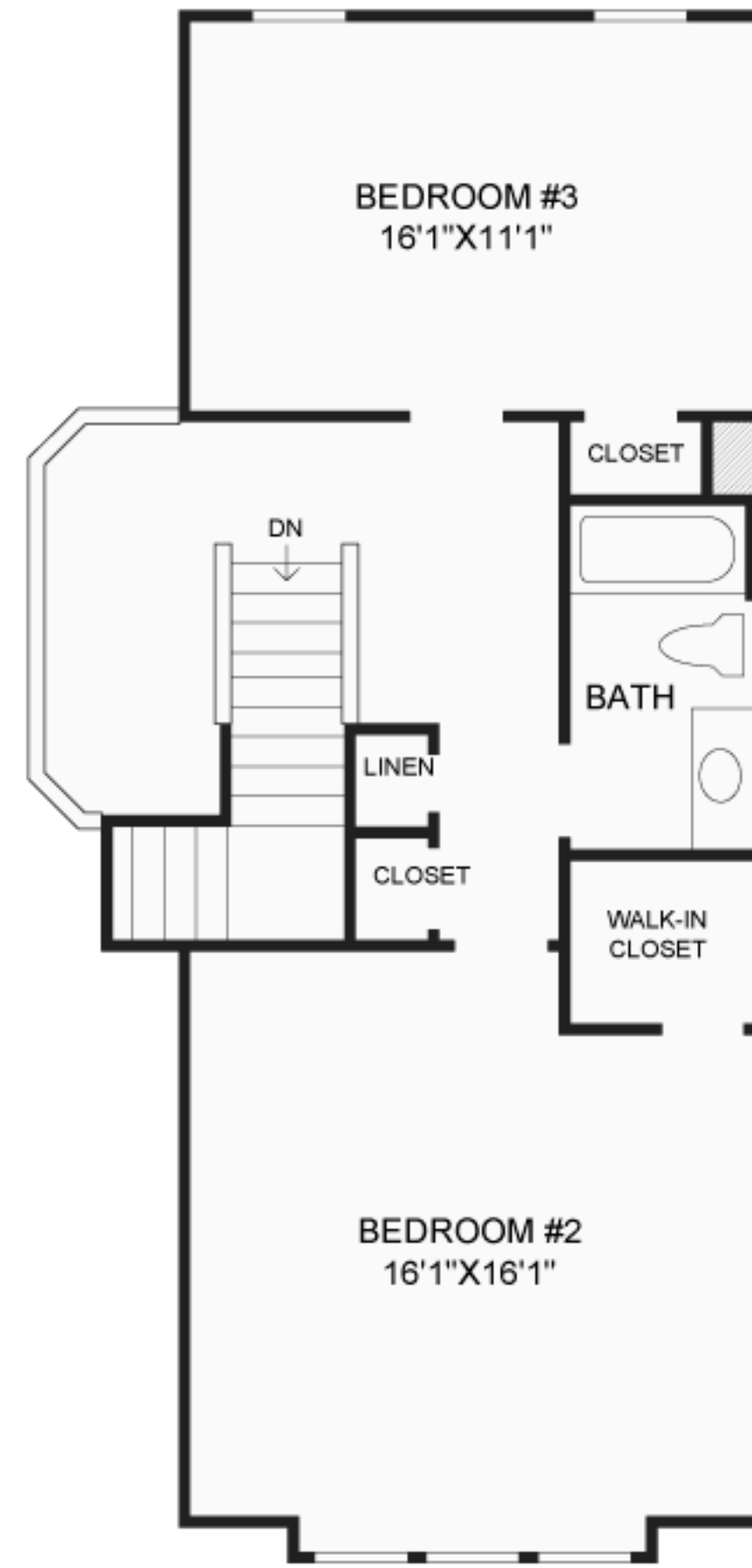
9' foot ceilings throughout the first floor.

3 bedrooms, 2½ baths.

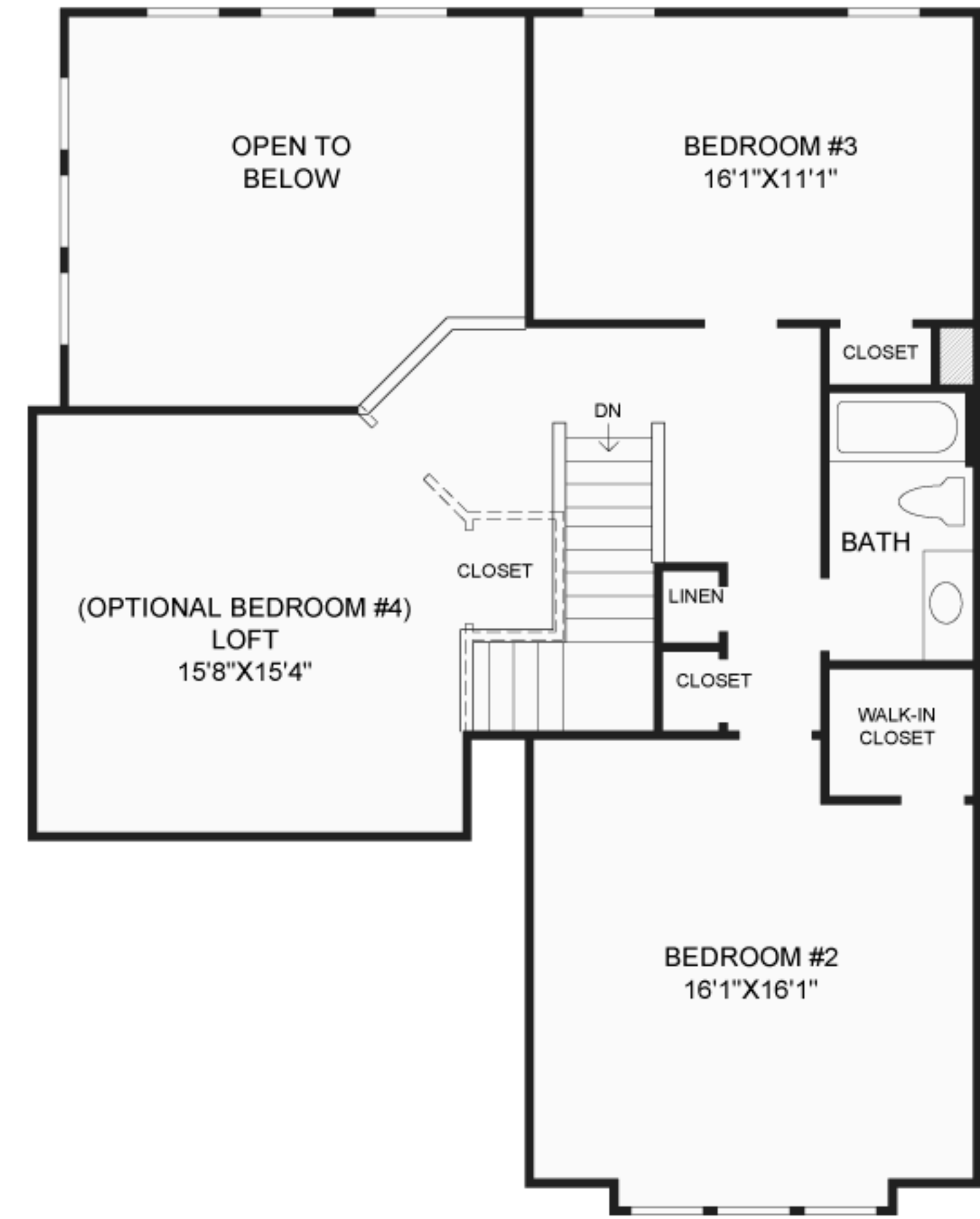
Standard two-car garage.



FIRST FLOOR



SECOND FLOOR



OPTIONAL FOURTH BEDROOM

All dimensions are approximate, shown to the maximum dimensions of each room, and are subject to field variation. Dimensions should not be used to calculate room square footage. Some windows, exterior features, ceiling heights, and floor plans may vary with elevations. Features may also vary from community to community. Please consult a Sales Manager for details. Options purchased must be specified in Exhibit B.