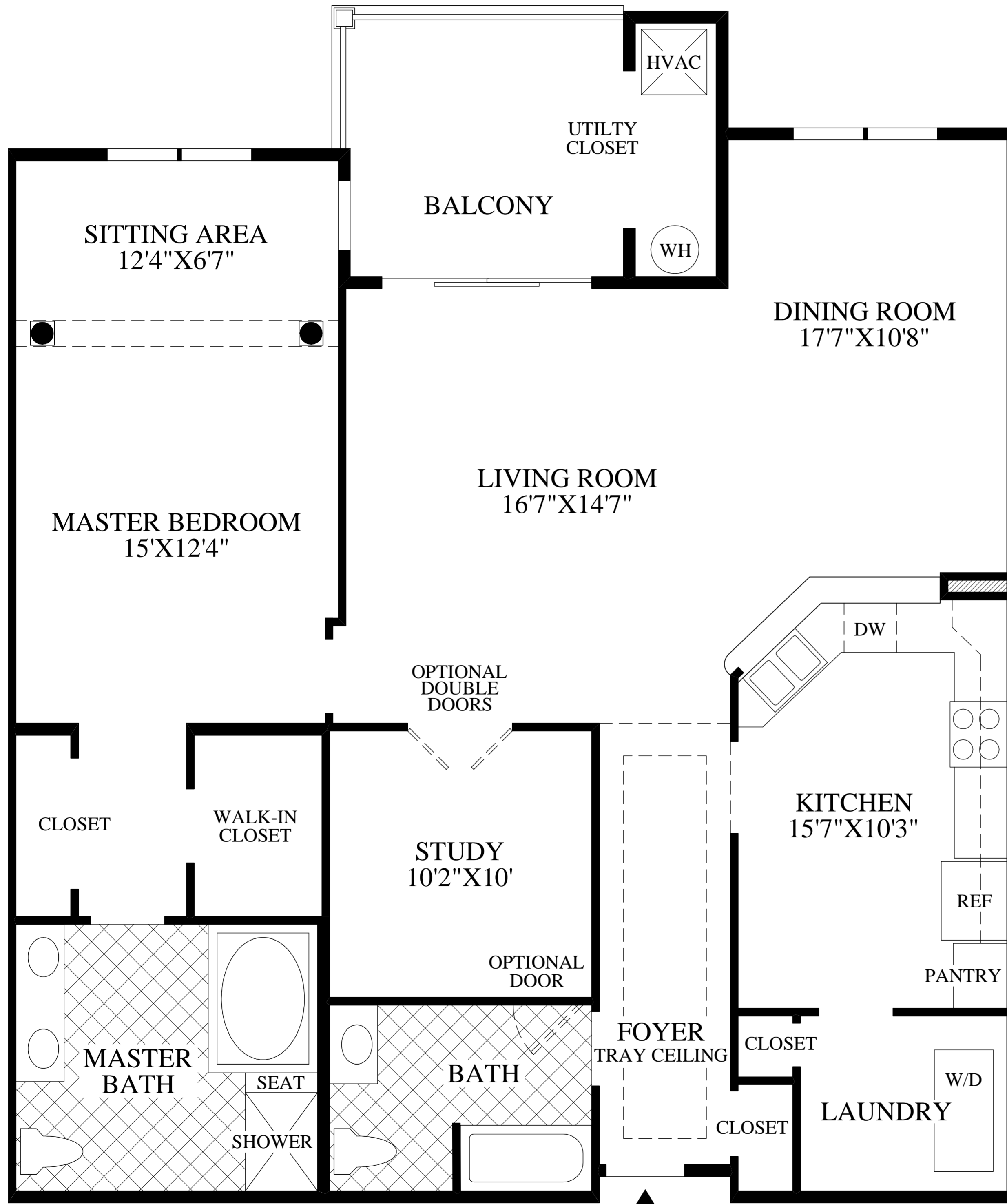


◆ The Attlebury ◆



Floor Plan

◆
 The study is located adjacent to the foyer with tray ceiling.
 The expansive living room features direct access to the balcony.
 The kitchen features a pantry and a breakfast bar and is conveniently located adjacent to the formal dining room.
 The master bedroom suite includes a sitting area, a walk-in closet and a private master bath with a Roman tub, a dual-sink vanity, and a separate shower with a seat.

◆
 Included study.
 1 bedroom, 2 baths.
 ◆

NOTE:
 WINDOW LOCATIONS AND SIZES MAY VARY
 DUE TO LOCATION OF UNIT IN BUILDING.

All dimensions are approximate, shown to the maximum dimensions of each room, and are subject to field variation. Dimensions should not be used to calculate room square footage. Some windows, exterior features, ceiling heights, and floor plans may vary with elevations. Some features may also vary from community to community. Please consult a Sales Representative for details. Options purchased must be specified in Exhibit B.