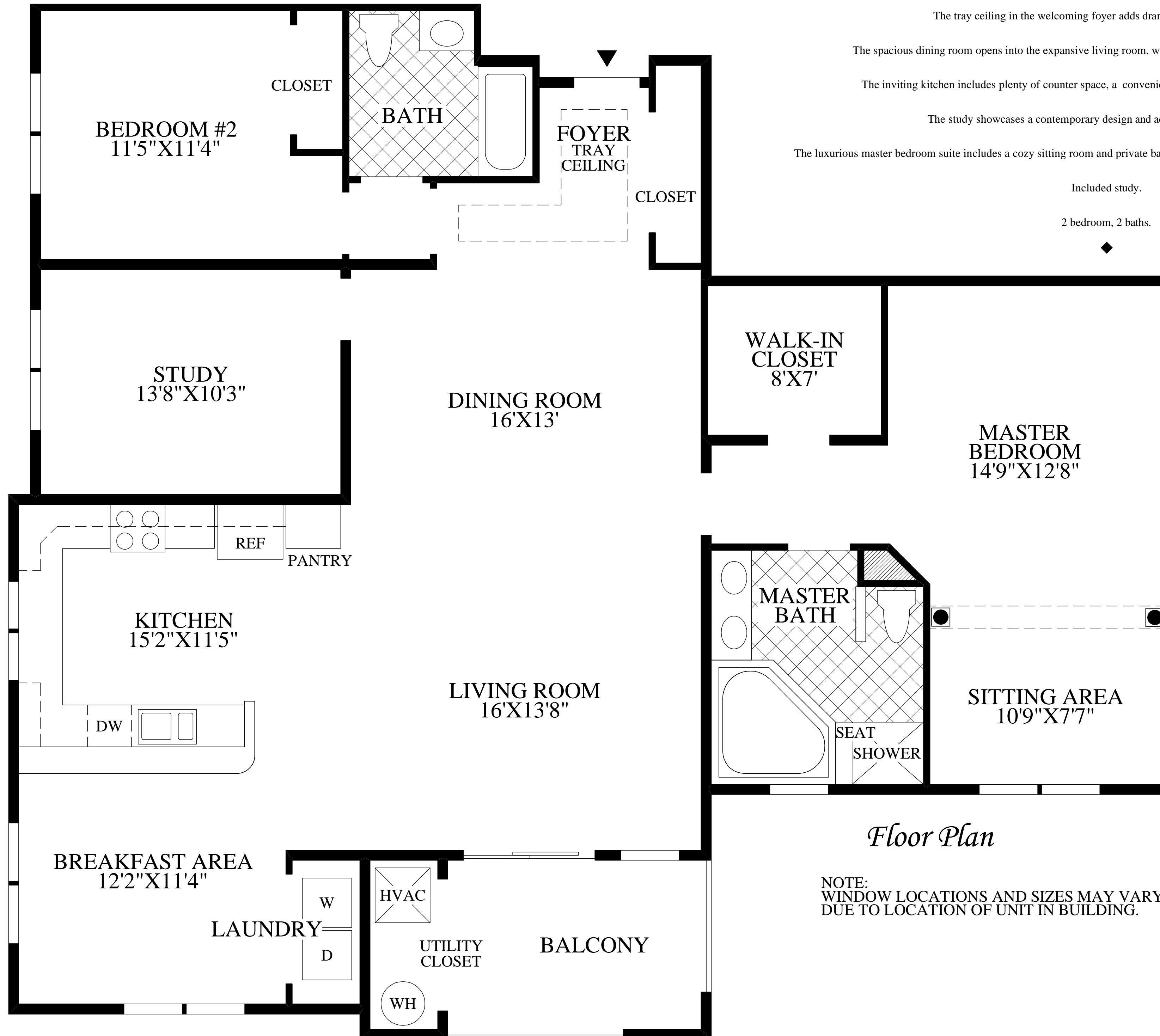


◆ The Bannerman ◆



The tray ceiling in the welcoming foyer adds drama as you enter this home.

The spacious dining room opens into the expansive living room, which features access to the covered balcony.

The inviting kitchen includes plenty of counter space, a convenient pantry, and an adjacent breakfast area.

The study showcases a contemporary design and adds great convenient space.

The luxurious master bedroom suite includes a cozy sitting room and private bath with soaking tub, separate shower, and double vanity.

Included study.
2 bedroom, 2 baths.

Floor Plan

NOTE:
WINDOW LOCATIONS AND SIZES MAY VARY
DUE TO LOCATION OF UNIT IN BUILDING.

All dimensions are approximate, shown to the maximum dimensions of each room, and are subject to field variation. Dimensions should not be used to calculate room square footage. Some windows, exterior features, ceiling heights, and floor plans may vary with elevations. Some features may also vary from community to community. Please consult a Sales Representative for details. Options purchased must be specified in Exhibit B.