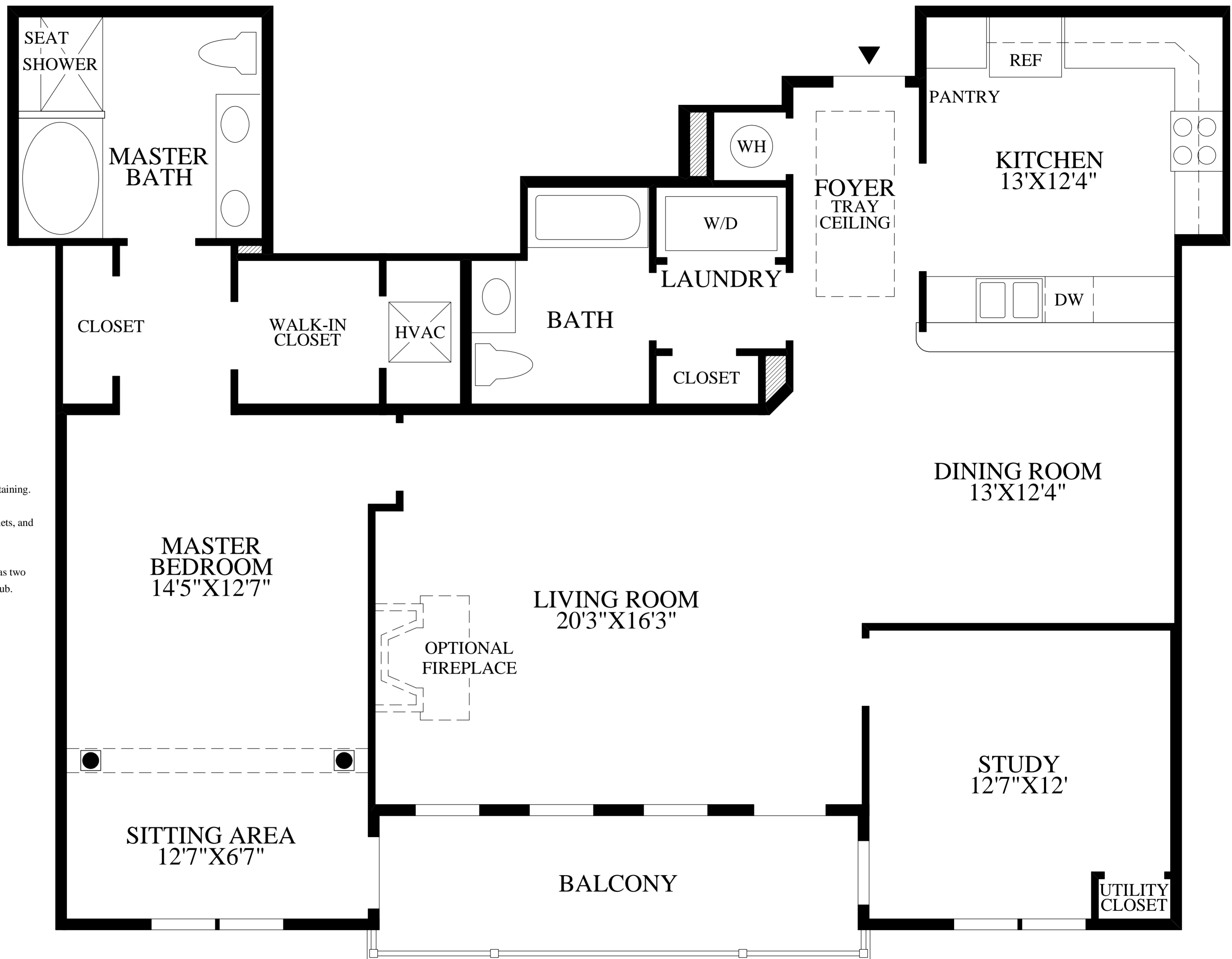


◆ The Baron ◆



◆
An expansive foyer with tray ceiling welcomes you into this home.

The dining room opens to the the spacious living room with access to the balcony, creating an inviting space for both casual and formal entertaining.

The thoughtfully designed kitchen offers plenty of counter space and cabinets, and also features a pantry for extra storage.

The master bedroom retreat features direct access to the balcony as well as two spacious closets and a private bath with dual-sink vanity and Roman tub.

◆
Included study.

1 bedroom, 2 baths.
◆

Floor Plan

NOTE:
WINDOW LOCATIONS AND SIZES MAY VARY DUE TO LOCATION OF UNIT IN BUILDING.
BALCONY SIZE MAY VARY DUE TO LOCATION OF UNIT IN BUILDING.

All dimensions are approximate, shown to the maximum dimensions of each room, and are subject to field variation. Dimensions should not be used to calculate room square footage. Some windows, exterior features, ceiling heights, and floor plans may vary with elevations. Features may also vary from community to community. Please consult a Sales Representative for details. Options purchased must be specified in Exhibit B. This is not an offering where prohibited by law.

Toll Brothers
America's Luxury Home Builder™
tollbrothers.com



The floor plans and elevations of **Toll Brothers** homes are copyrighted. We have enforced and will continue to enforce our federal copyrights to protect the investment of our home buyers.

This insert was produced using recycled products. ♻️

(NE-MASTER) 0629©2010 TOLL BROTHERS, INC. (BARON)