

THE BEEKMAN

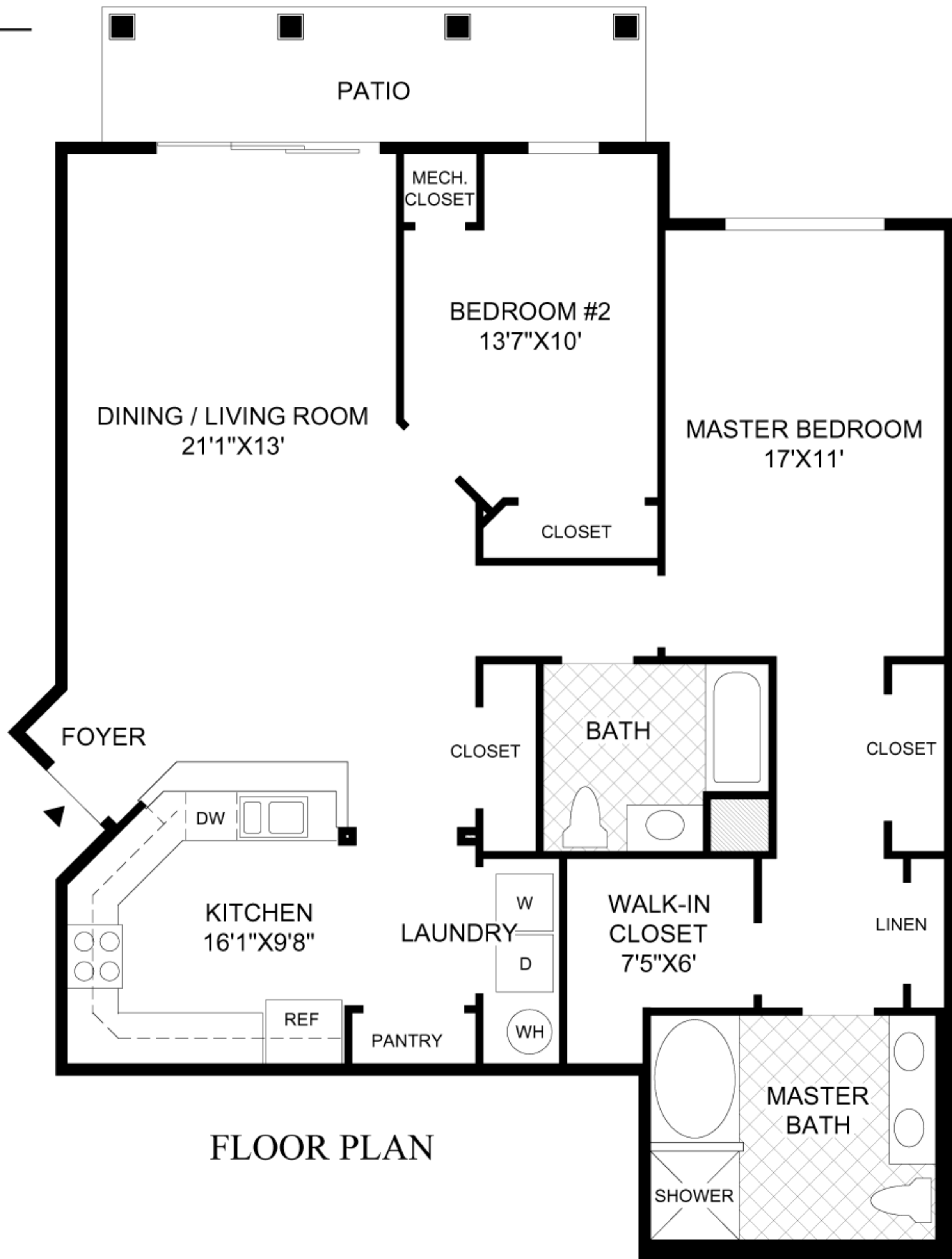
The foyer opens to the dining room and adjacent living room, which features access to the patio.

The kitchen features ample counter and cabinet space and a convenient breakfast bar.

The master bedroom offers abundant storage space with a large walk-in closet, two secondary closets, and a private bath with a Roman tub, separate shower, and a dual-sink vanity.

Nine-foot ceilings throughout.

2 bedrooms, 2 baths.



FLOOR PLAN

Toll Brothers
 America's Luxury Home Builder™
 tollbrothers.com



The floor plans and elevations of Toll Brothers homes are copyrighted. We have enforced and will continue to enforce our federal copyrights to protect the investment of our home buyers.

This insert was produced using recycled products. ♻️

All dimensions are approximate, shown to the maximum dimensions of each room, and are subject to field variation. Dimensions should not be used to calculate room square footage. Some windows, exterior features, ceiling heights, and floor plans may vary with elevations. Some features may also vary from community to community. Please consult a Sales Representative for details. Options purchased must be specified in Exhibit B.