

THE BIELLA

The covered entry leads to an elegant foyer with expansive views through the great room out to a large covered lanai.

A well appointed gourmet kitchen features a sunlit breakfast area and is convenient to the formal dining room and the spacious great room.

The master bedroom suite opens to the covered lanai and features a coffered ceiling, two closets and a luxurious master bath with his-and-her vanities, a Roman tub, a separate shower and a private water closet.

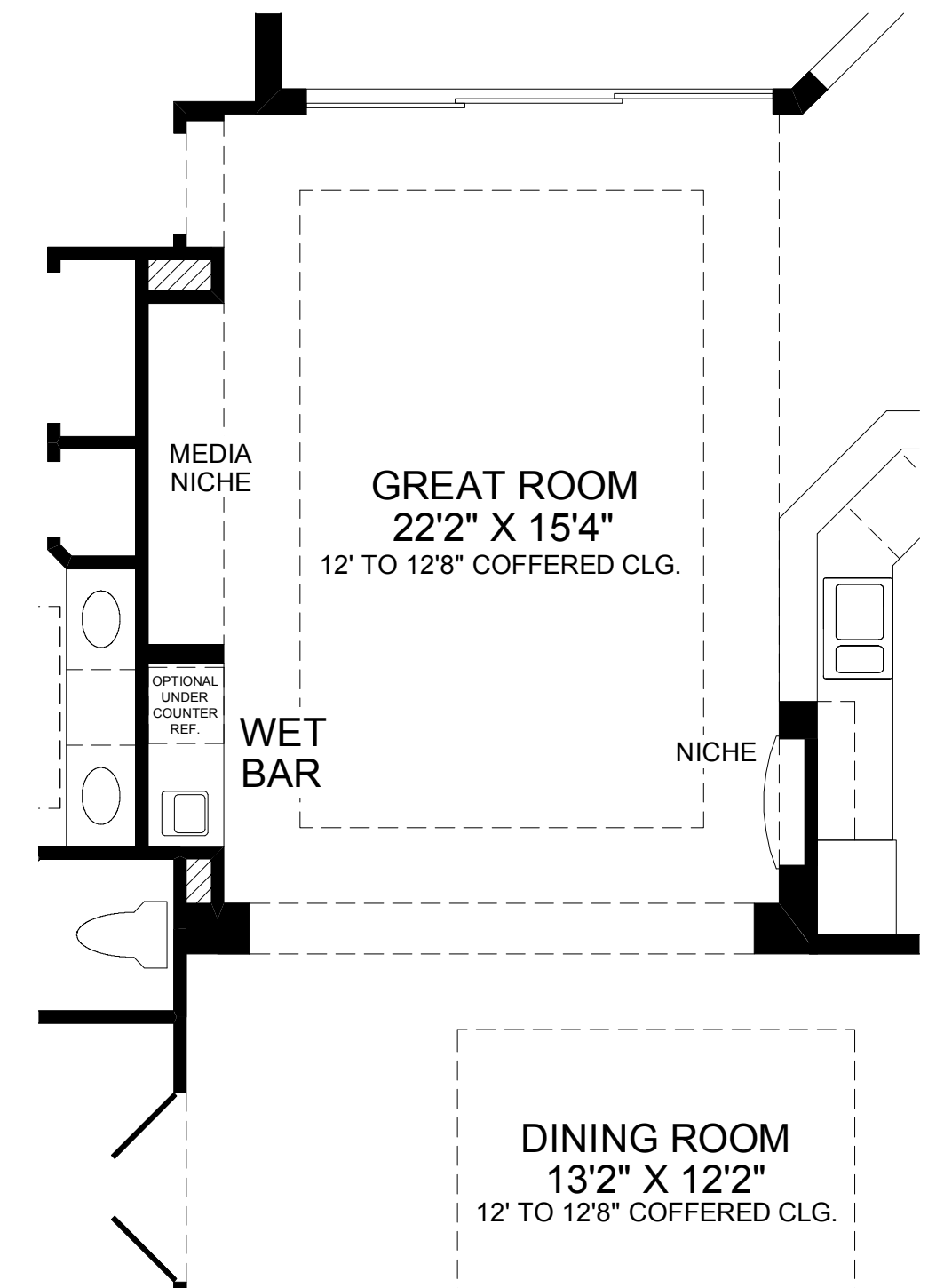
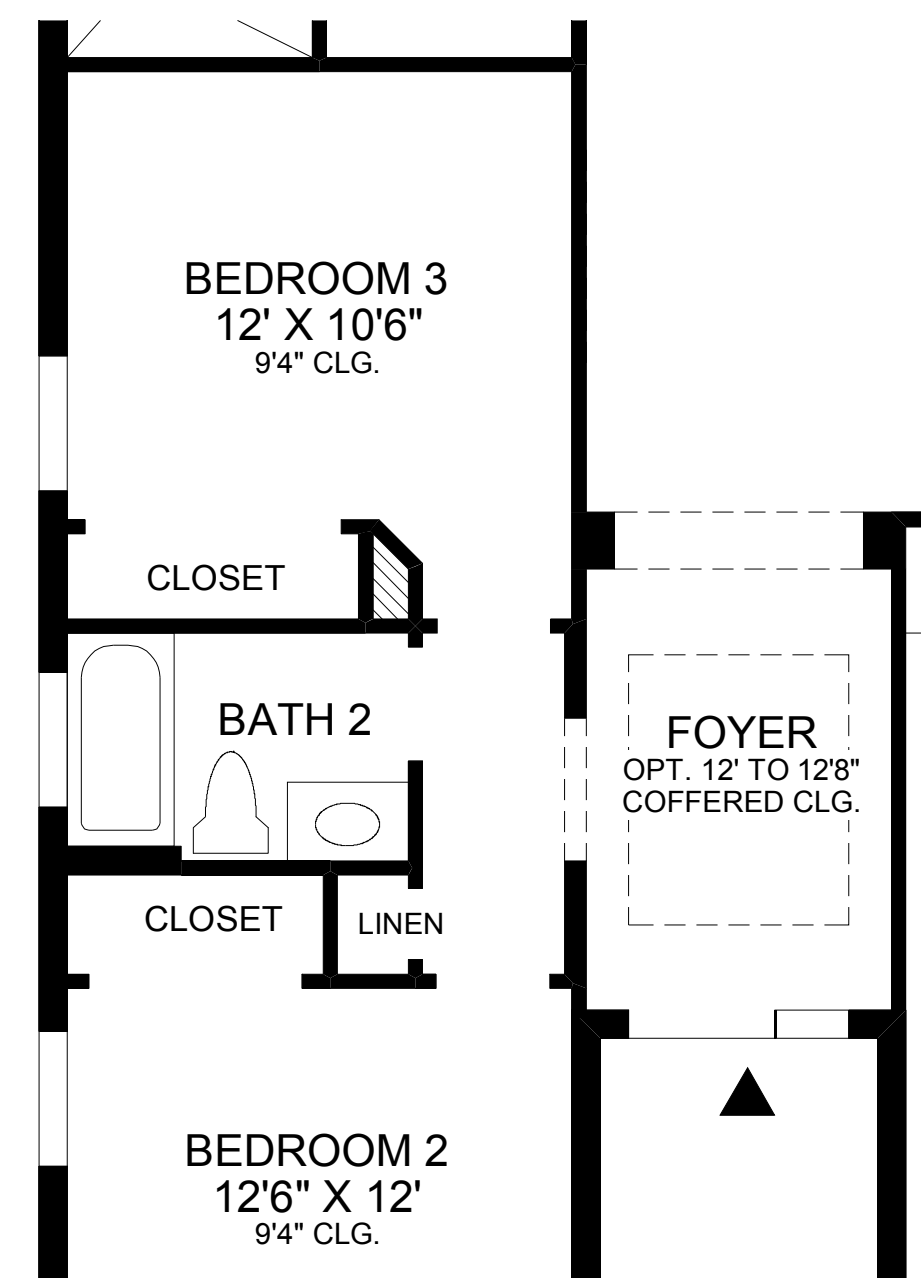
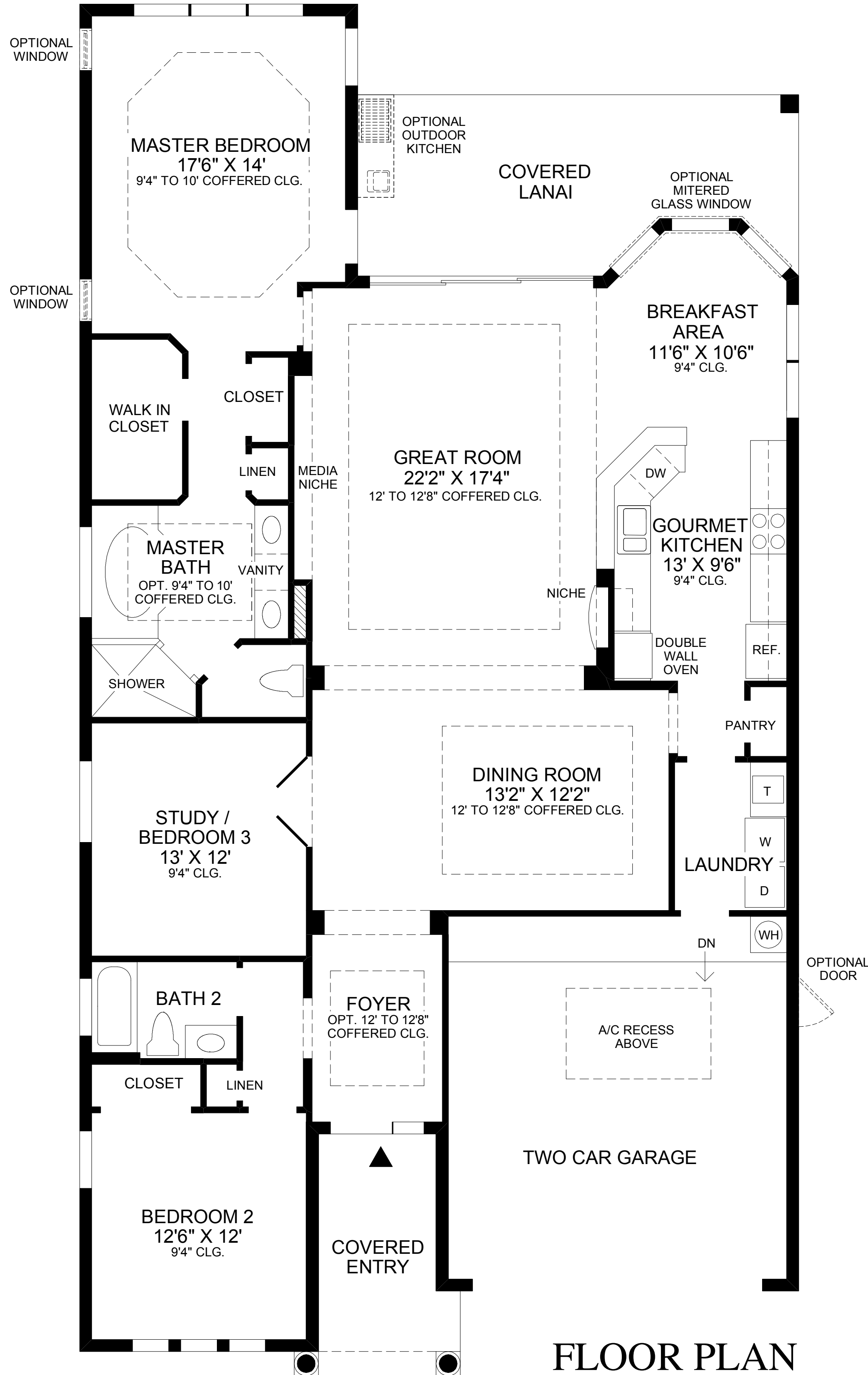
Additional features include a private study, a second bedroom suite and a two-car garage.

Air Conditioned Living Area	2058 sf
Covered Lanai	219 sf
Covered Entry	95 sf
Garage	405 sf
Total	2777 sf



GREAT ROOM

NOTE: Photographs are for representational purposes only and may contain optional and/or additional features not offered in your community.



All dimensions are approximate, shown to the maximum dimensions of each room, and are subject to field variation. Dimensions should not be used to calculate room square footage. Some windows, exterior features, ceiling heights, and floor plans may vary with elevations. Features may also vary from community to community. Please consult a Sales Manager for details. Options purchased must be specified in exhibit B.

(FL-MASTER)_1214 ©2005 TOLL BROTHERS, INC. (BLLA)

Toll Brothers
America's Luxury Home Builder™
tollbrothers.com



The floor plans and elevations of Toll Brothers homes are copyrighted. We have enforced and will continue to enforce our federal copyrights to protect the investment of our home buyers.

This insert was produced using recycled products.