

# THE BROMLEY COLLECTION

The Bromley's two story foyer opens to the formal dining room and formal living room, and has a view of the elegant turned stair.

The spacious kitchen with center island opens to the breakfast area, with laundry and back stair nearby.

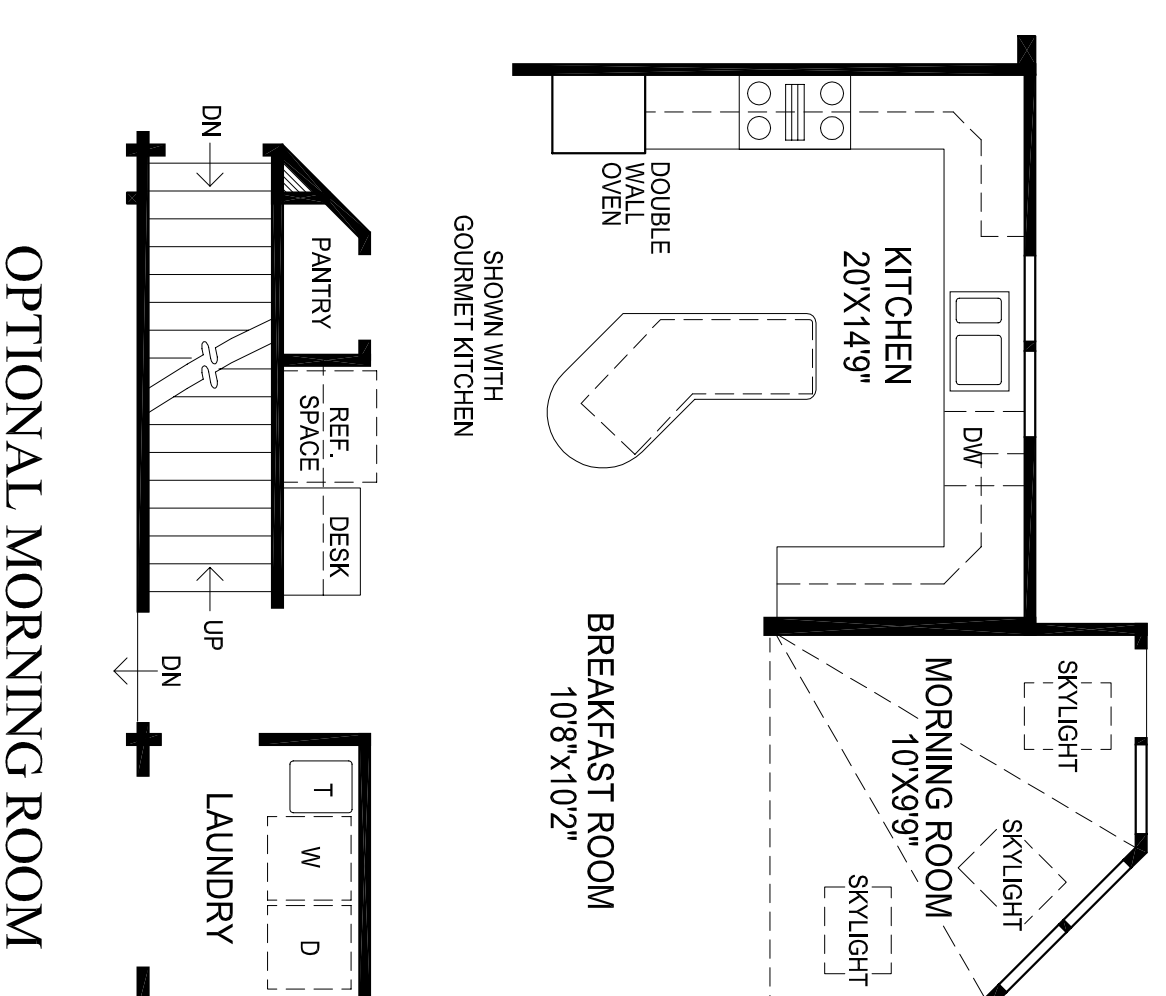
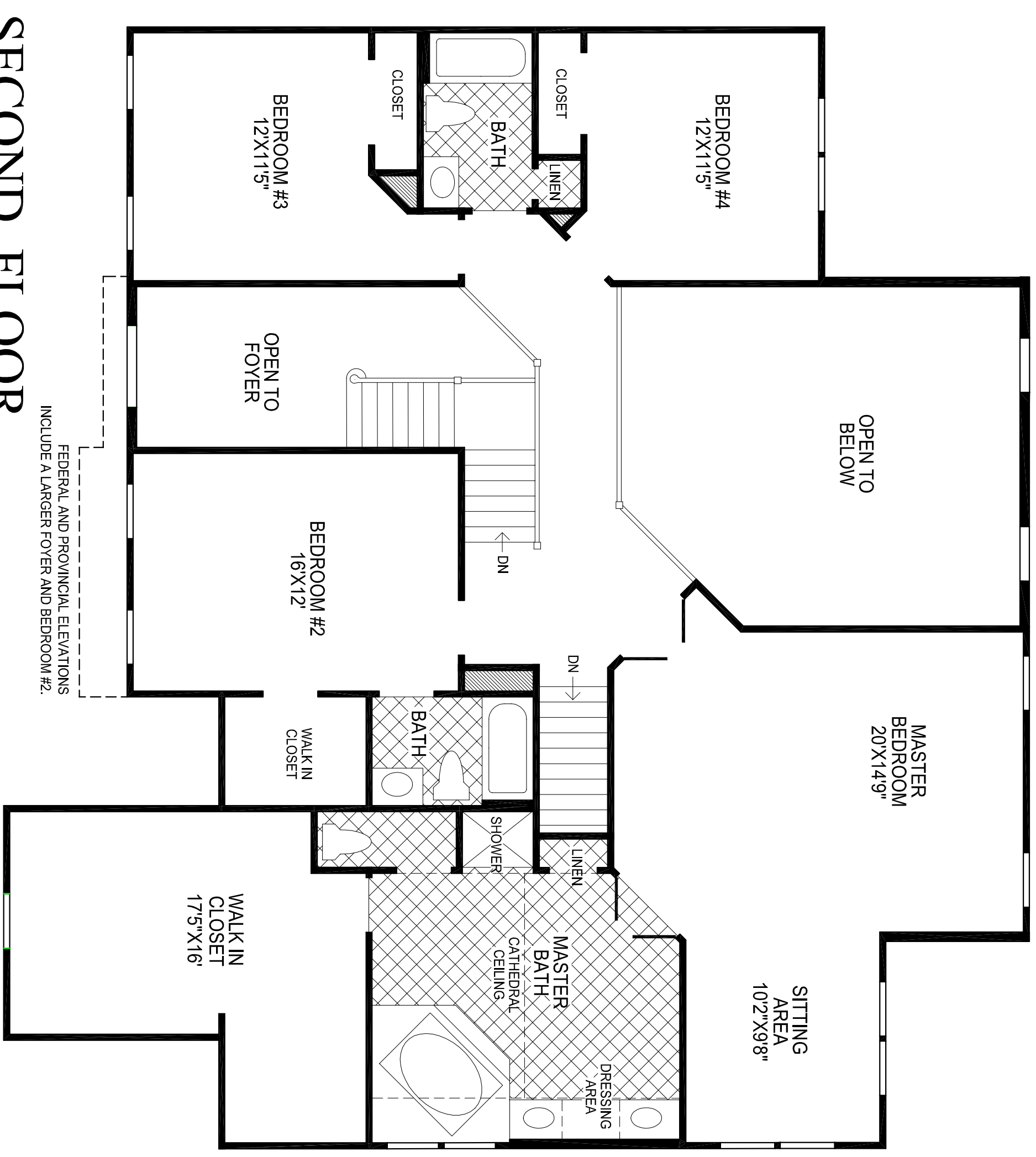
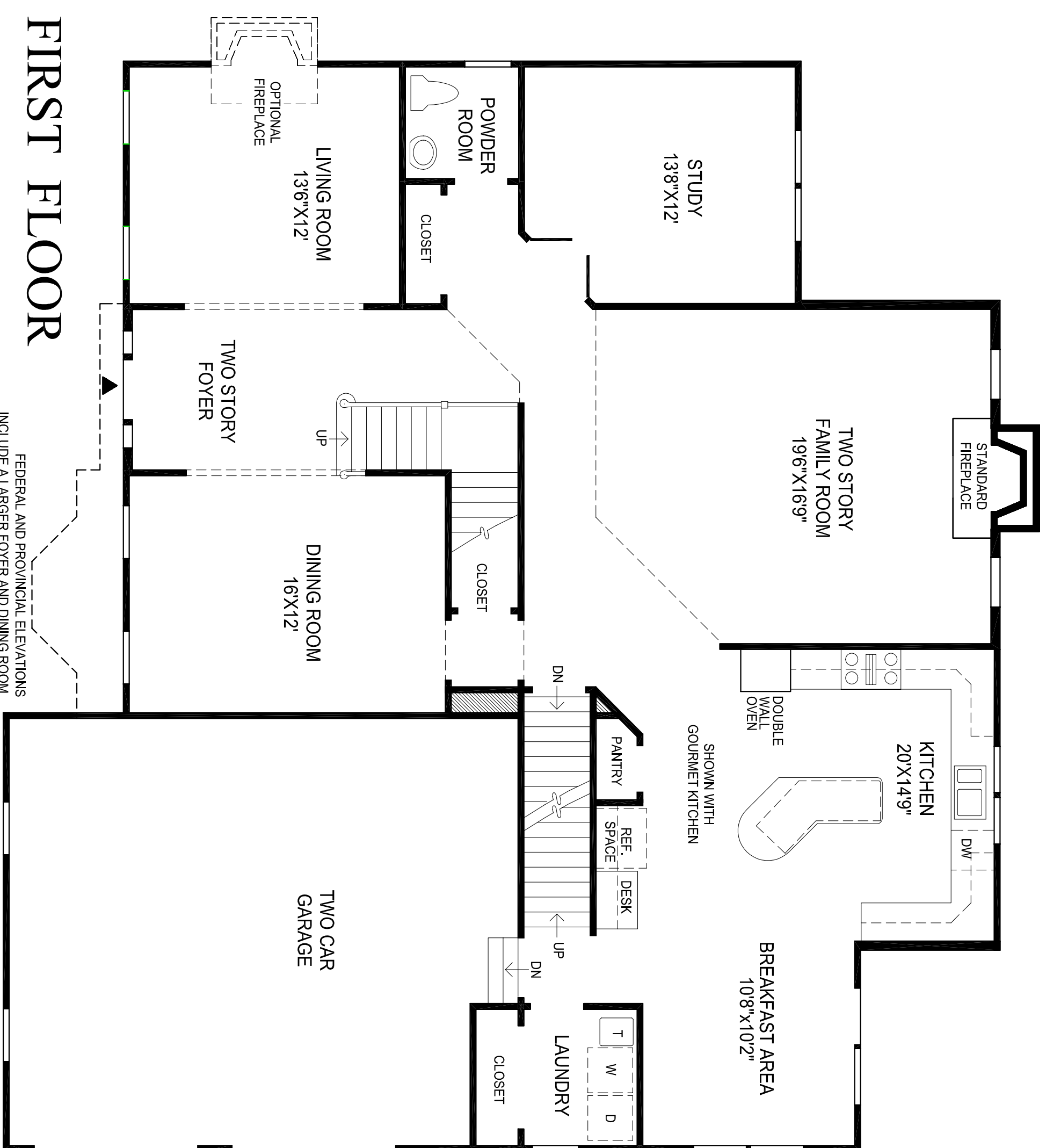
A large two story family room includes a standard fireplace.

The first floor study is perfectly located for privacy.

Many luxuries are included in the master suite; with sitting area, huge master bath with private toilet, Roman tub, dual vanities, and roomy walk in closet.

The second floor hallway overlooks the foyer and family room.

4 bedrooms, 3 1/2 baths.



All room dimensions are approximate, shown to the maximum dimensions of each room, and are subject to field variation. Dimensions should not be used to calculate room square footage. Some windows and floor plans may vary with elevations. Some features may vary from community to community. Please consult a Sales Manager for details. Options purchased must be specified in exhibit B.  
(MASTER) 0528 ©2003 TOLL BROTHERS, INC. (BROMLEY-602)

**Toll Brothers**  
America's Luxury Home Builder™  
tollbrothers.com

The floorplans and elevations of Toll Brothers homes are copyrighted. We have collected and will continue to enforce our federal copyrights to protect the investment of our homebuyers. This insert was produced using recycled products. ♻️