

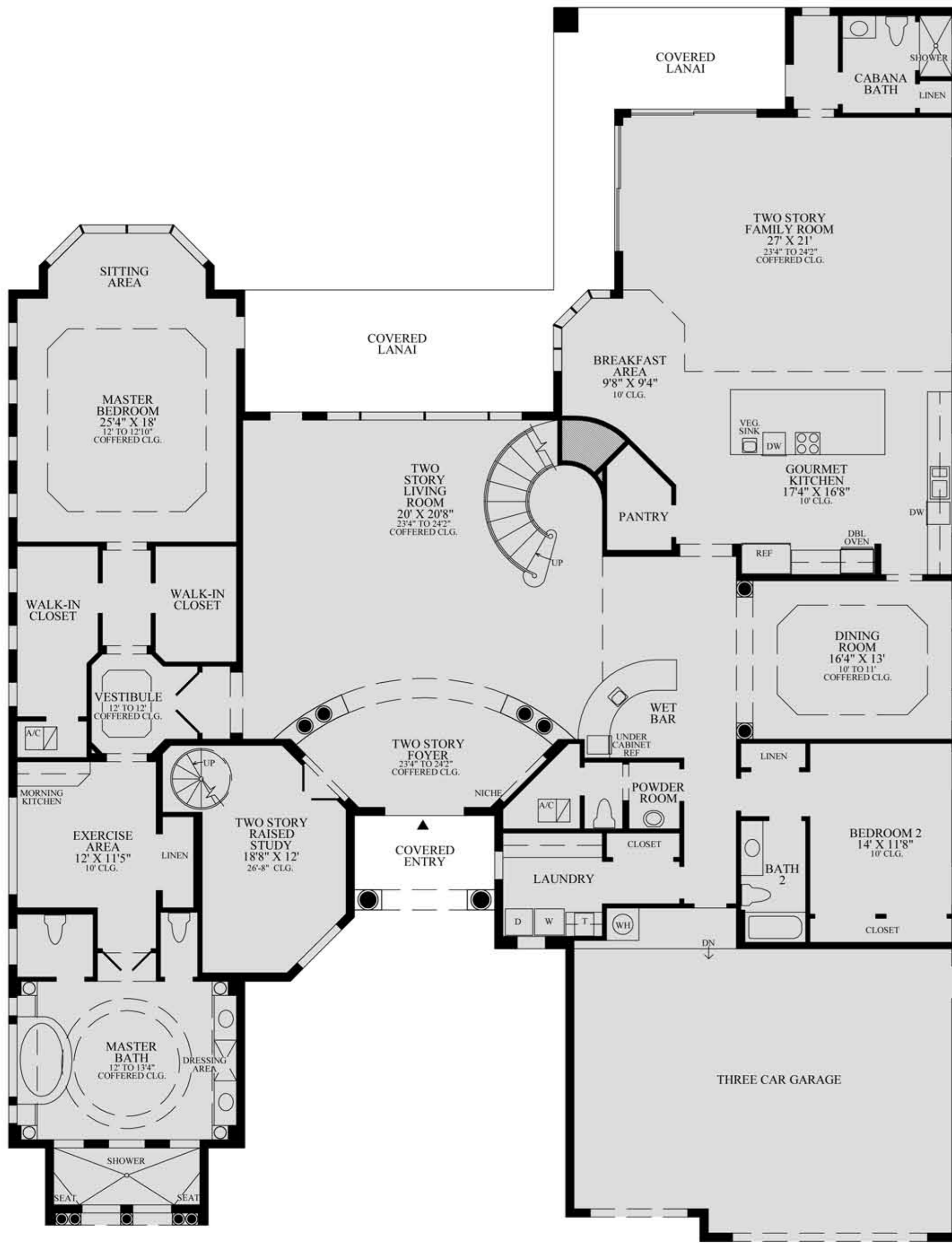
◆ The Casa Del Rey ◆

An inviting courtyard entry opens to a lovely two-story foyer that leads to a spacious, two-story living room that encompasses a dramatic circular staircase and offers spectacular views of the rear landscape through a soaring picture window. A charming columned entry frames the nearby formal dining room, setting the scene for lavish entertaining.

The expansive gourmet kitchen boasts a generous center island and separate pantry that overlooks a sunlit breakfast area and a large family room with access to the cabana bath and covered lanai.

The luxurious master bedroom suite includes a coffered ceiling, cozy sitting area, two walk-in closets, and exercise area, and a master bath with two-private water closets, dual vanity sinks with dressing area, roman tub, and a walk-around shower.

Upstairs, an open loft and learning center overlook the living areas below and lead to four additional bedrooms, each with a full bath. This majestic home is further enhanced by a first floor guest bedroom, a private two-story study with double doors, a conveniently located powder room, a separate laundry room, and a three-car garage.



First Floor



Second Floor

First Floor	4,807 sq. ft.
Second Floor	2,184 sq. ft.
Air Conditioned Living Area	6,991 sq. ft.
Covered Entry	89 sq. ft.
Covered Lanai	490 sq. ft.
Garage	792 sq. ft.
Total	8,362 sq. ft.