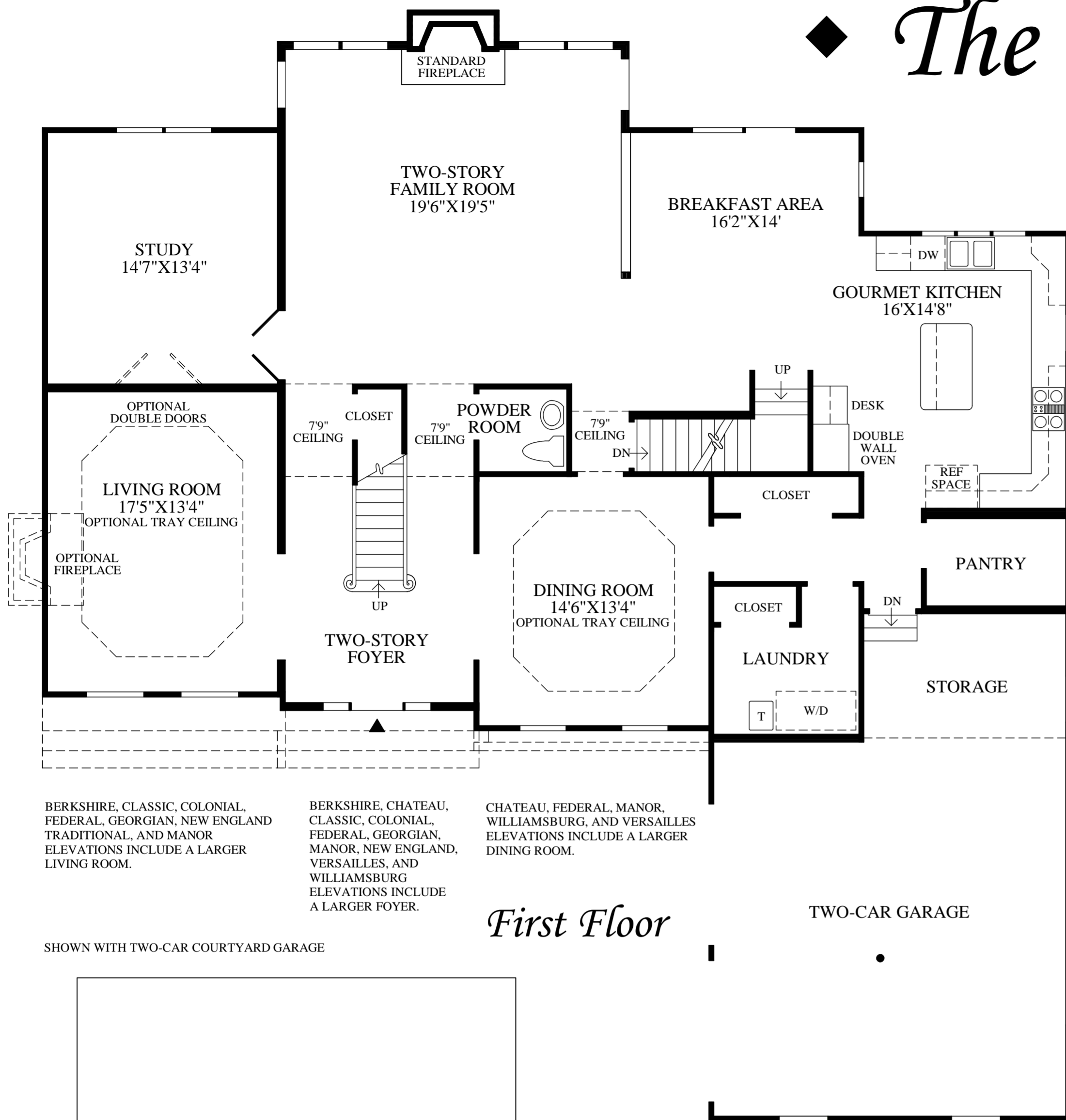
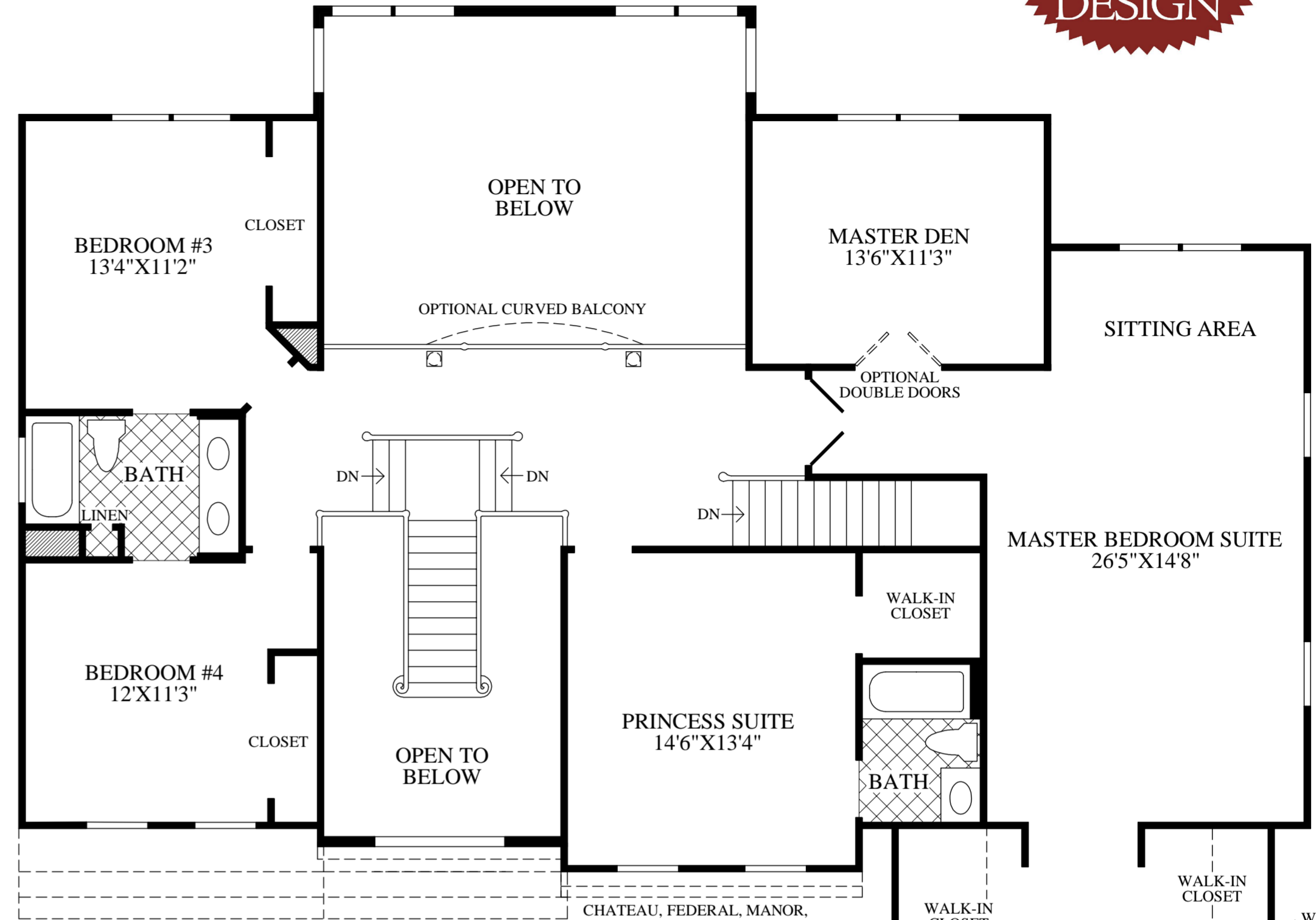


# The Claridge



*First Floor*



*Second Floor*

carm\_fam\_rm.tif

FAMILY ROOM

4 bedrooms, 3 1/2 baths.

carm\_foy.tif

FOYER

- A dramatic divided staircase complements the soaring two-story foyer.
- Two-story family room with standard fireplace.
- Gourmet kitchen complete with island countertop and a convenient breakfast area.
- Large, private, first floor study.
- Spacious master bedroom suite with private master den, sitting area, large walk-in closets, and elegant master bath with Roman tub and separate vanities.
- Princess suite with private bath.
- Nine foot ceilings first floor; nine foot ceilings second floor.

BERKSHIRE, CLASSIC, COLONIAL, FEDERAL, GEORGIAN, NEW ENGLAND TRADITIONAL, AND MANOR ELEVATIONS INCLUDE A LARGER LIVING ROOM.

BERKSHIRE, CHATEAU, CLASSIC, COLONIAL, FEDERAL, GEORGIAN, MANOR, NEW ENGLAND, VERSAILLES, AND WILLIAMSBURG ELEVATIONS INCLUDE A LARGER FOYER.

CHATEAU, FEDERAL, MANOR, WILLIAMSBURG, AND VERSAILLES ELEVATIONS INCLUDE A LARGER DINING ROOM.

TWO-CAR GARAGE

CLASSIC ELEVATION INCLUDES A LARGER GARAGE

BERKSHIRE, CLASSIC, COLONIAL, FEDERAL, GEORGIAN, MANOR, NEW ENGLAND, AND TRADITIONAL ELEVATIONS INCLUDE A LARGER BEDROOM.

BERKSHIRE, CHATEAU, CLASSIC, COLONIAL, FEDERAL, GEORGIAN, MANOR, NEW ENGLAND, VERSAILLES, AND WILLIAMSBURG ELEVATIONS INCLUDE A LARGER FOYER.

CHATEAU, FEDERAL, MANOR, WILLIAMSBURG, AND VERSAILLES ELEVATIONS INCLUDE A LARGER PRINCESS SUITE.

WALL HEIGHT APPROX. 5'9"

WALL HEIGHT APPROX. 8'7"

WALL HEIGHT APPROX. 5'9"

WALL HEIGHT APPROX. 6'9"

CLASSIC ELEVATION INCLUDES A LARGER MASTER BATH.

NOTE: Photographs are for representational purposes only and may contain optional and/or additional features not offered in your community.

The floor plans and elevations of Toll Brothers homes are copyrighted. We have enforced and will continue to enforce our federal copyrights to protect the investment of our home buyers.



This insert was produced using recycled products.