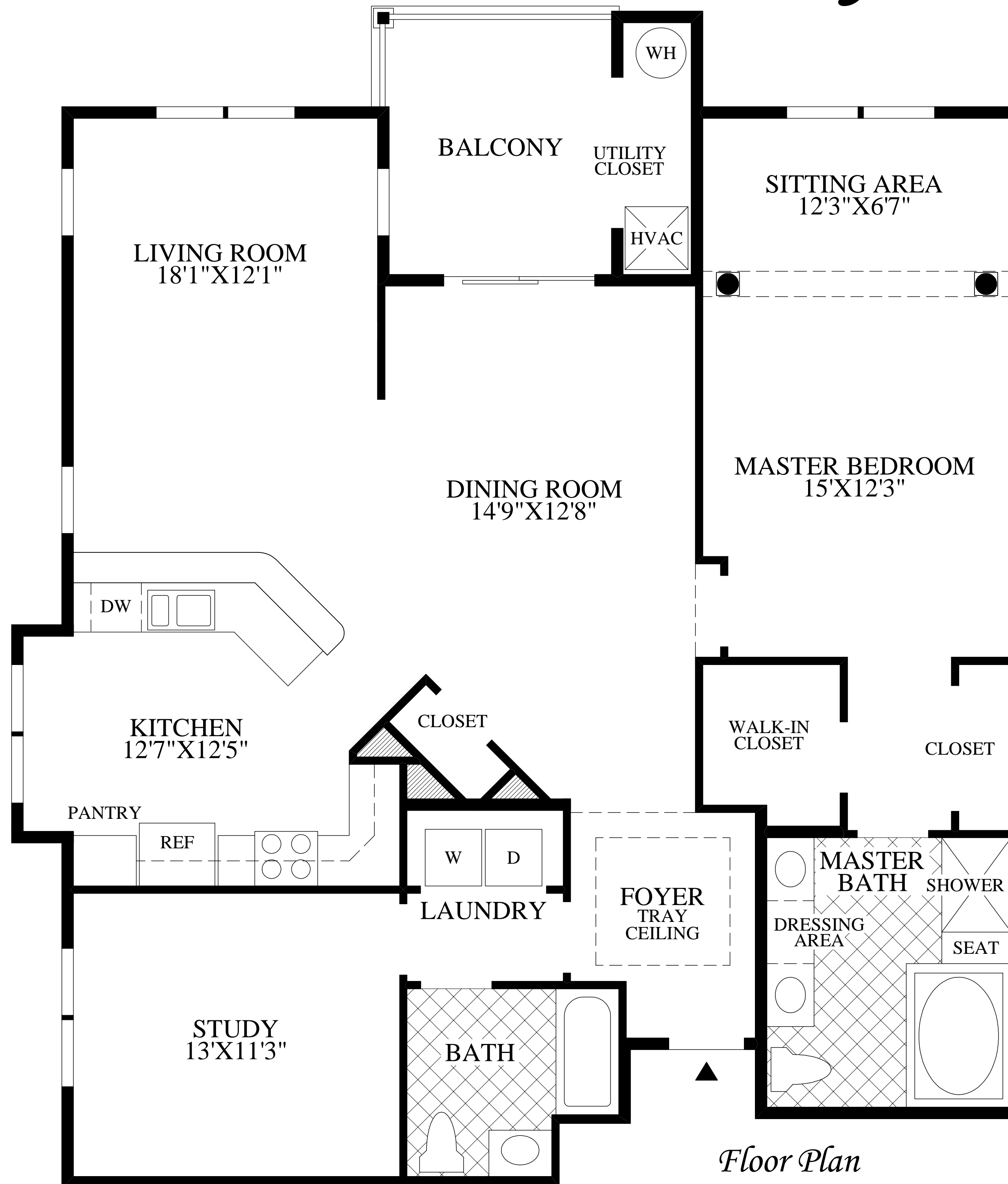


◆ The Clifton ◆



◆
 The dramatic foyer with tray ceiling opens into the expansive dining room and adjacent kitchen and living room.
 Ideal for entertaining, this open, airy design features a warm, bright living room with large windows.
 The kitchen and breakfast area offers abundant counter space and is open to both the dining room and living room.
 The inviting master bedroom suite is enhanced by an elegant sitting area with decorative columns, two spacious closets, and a luxurious master bath with double vanity, Roman soaking tub, and separate shower.

◆
 Included study.
 1 bedroom, 2 baths.
 ◆

NOTE:
 WINDOW LOCATIONS AND SIZES
 MAY VARY DUE TO LOCATION OF
 UNIT IN BUILDING.

Floor Plan