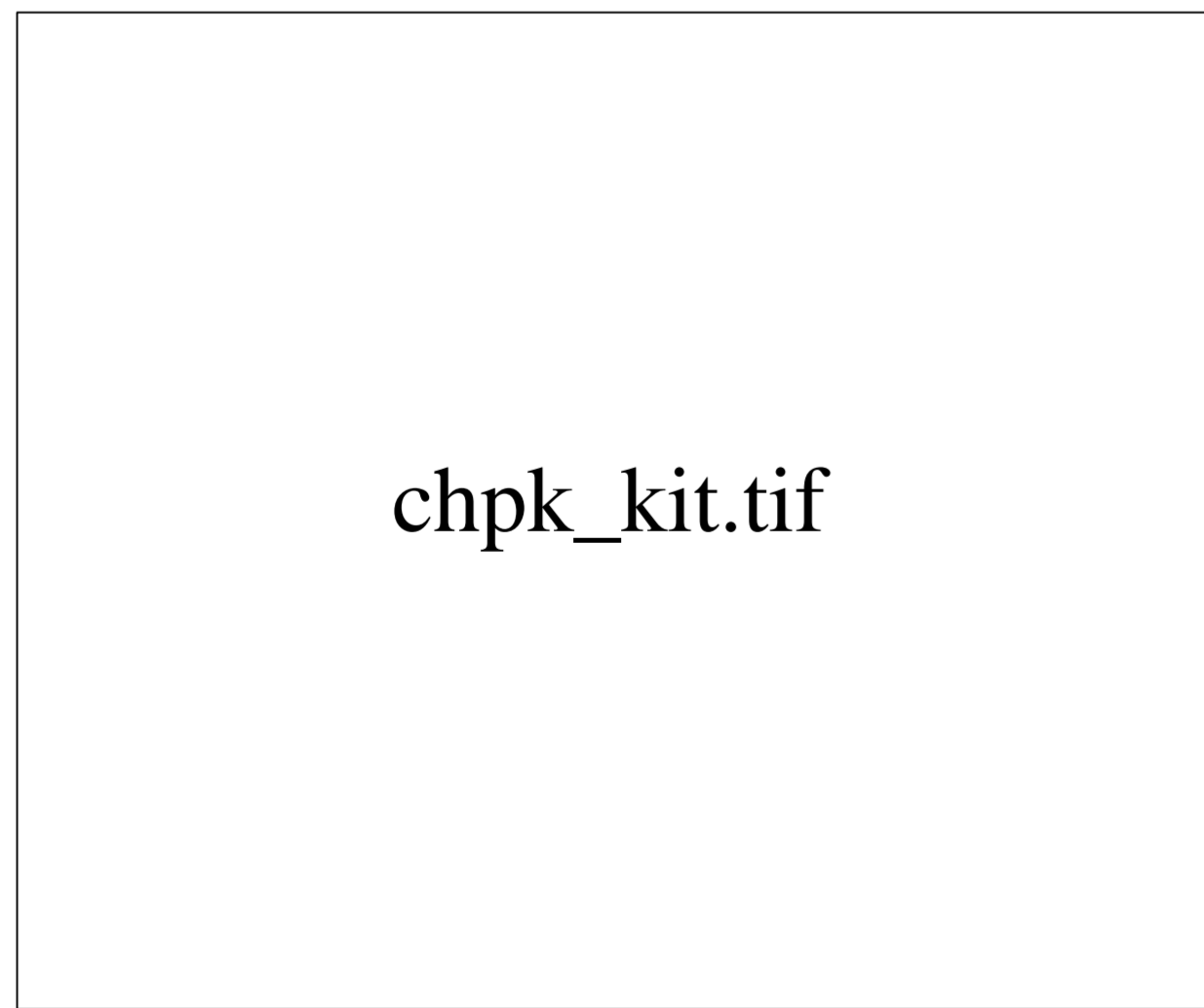
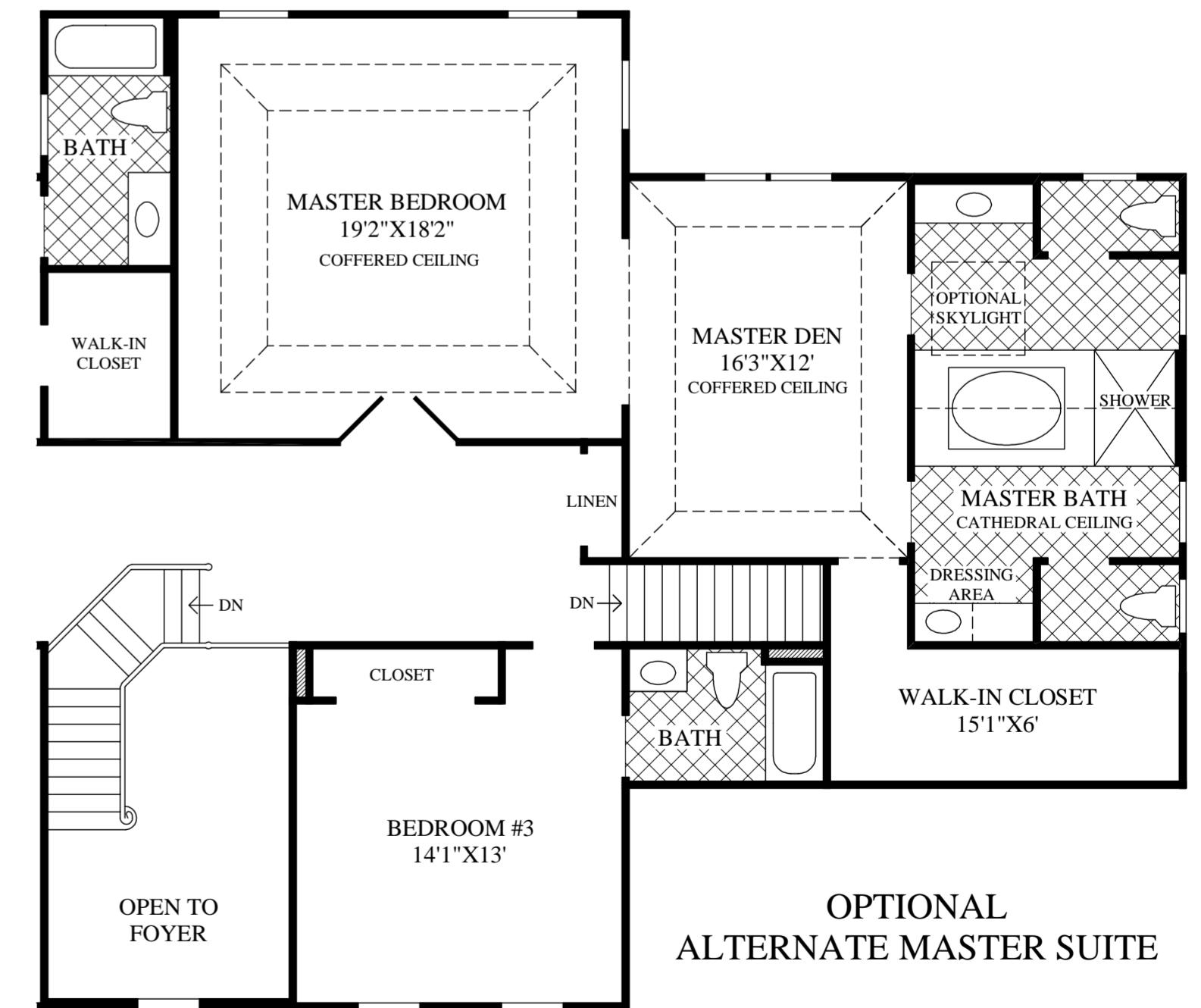
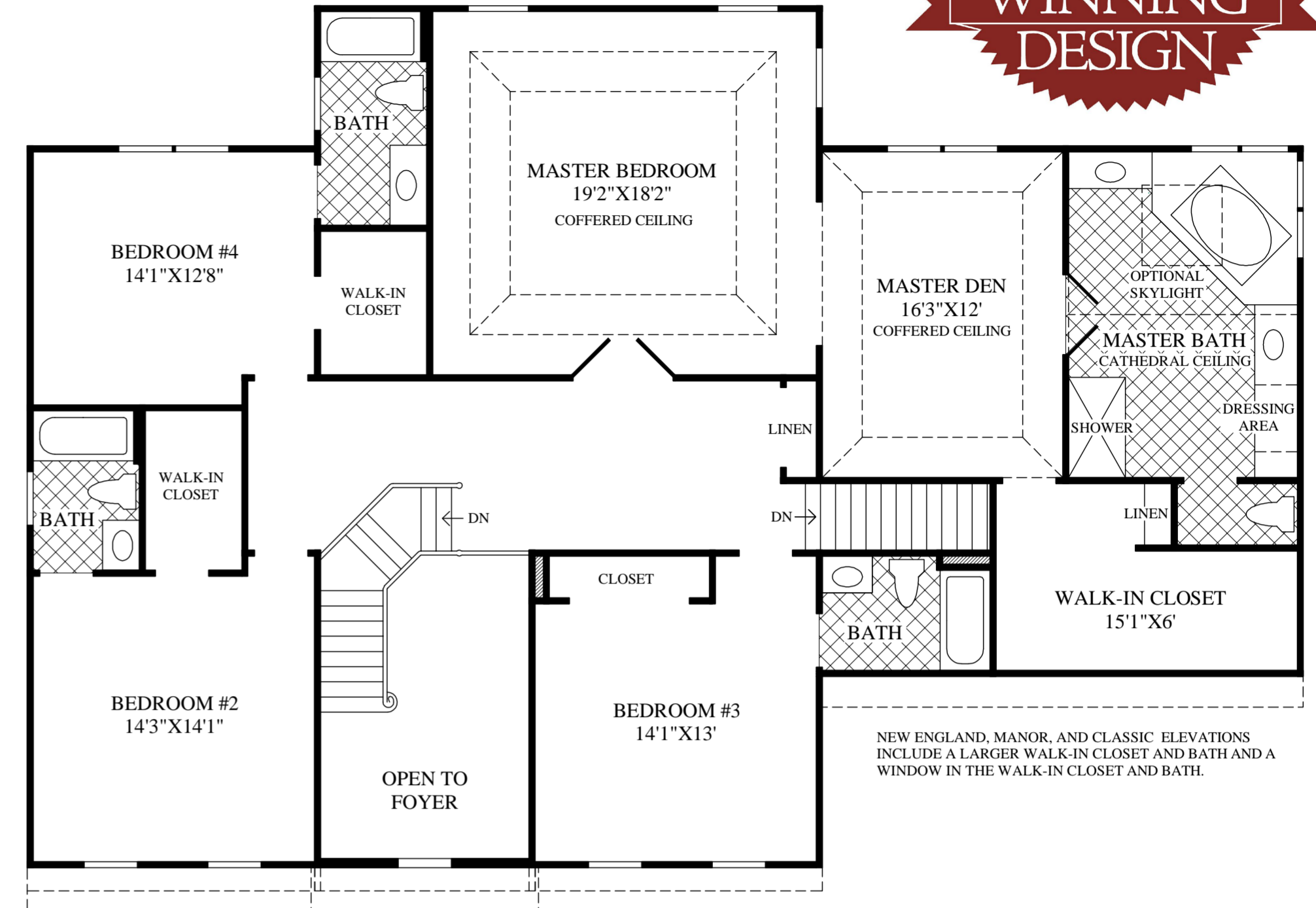
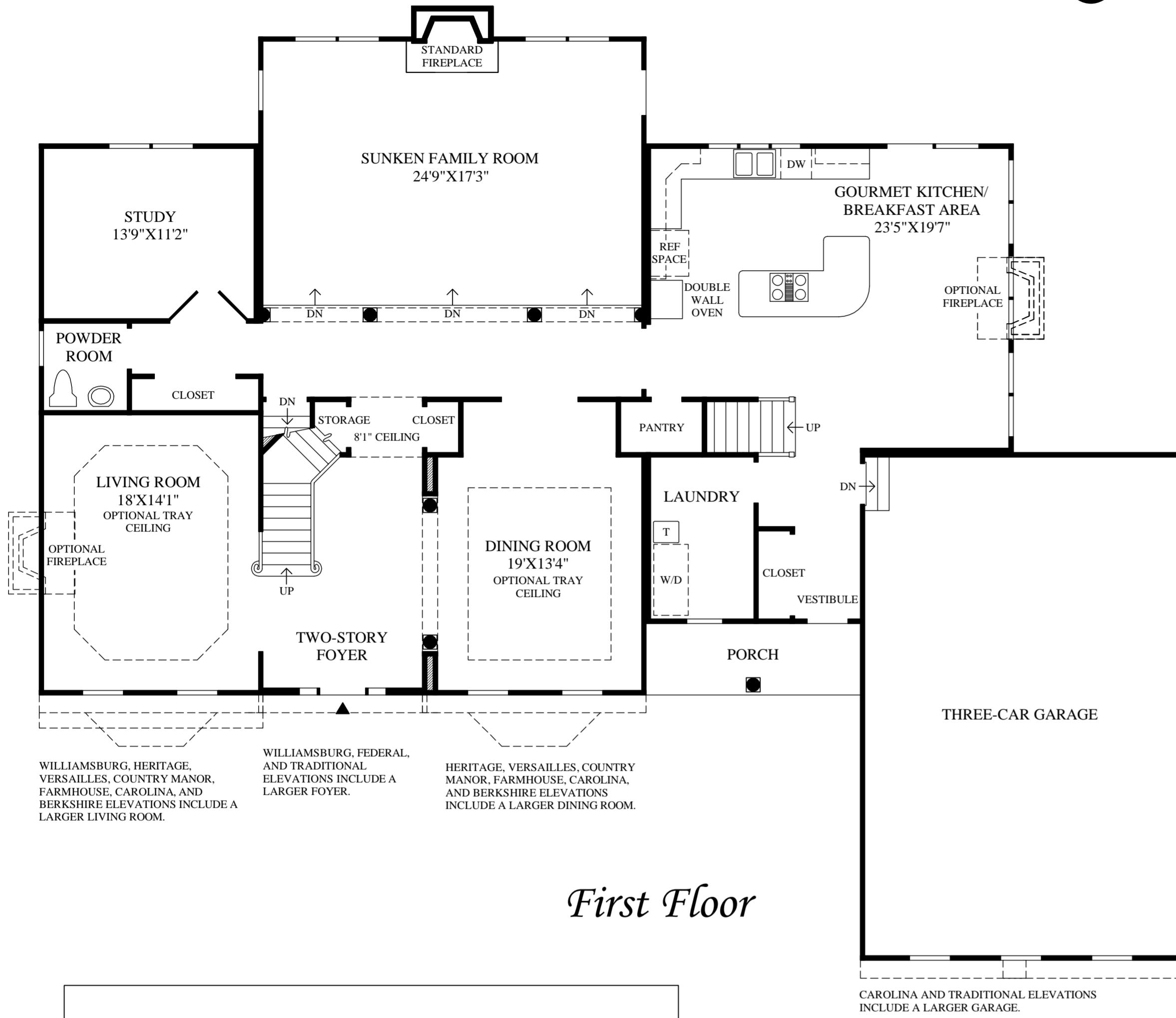


◆ The Coventry ◆



KITCHEN

- ◆ A distinctive double turned staircase complements the two-story foyer.
- ◆ Secondary front entry leads to kitchen and laundry area.
- ◆ A large sunny breakfast area and well-appointed kitchen is complete with island countertop and pantry.
- ◆ Private first floor study is adjacent to the large family room.
- ◆ Expansive master bedroom suite includes a private den with a standard coffered ceiling, large walk-in closet, as well as a spacious master bath.
- ◆ Nine-foot ceilings throughout the first floor and nine-foot ceilings throughout the second floor.
- ◆ 4 bedrooms, 4½ baths.
- ◆ Standard three-car garage.

NOTE: Photographs are for representational purposes only and may contain optional and/or additional features not offered in your community.

The floor plans and elevations of **Toll Brothers** homes are copyrighted. We have enforced and will continue to enforce our federal copyrights to protect the investment of our home buyers.



This insert was produced using recycled products. ♻️