

THE DUTCHESS

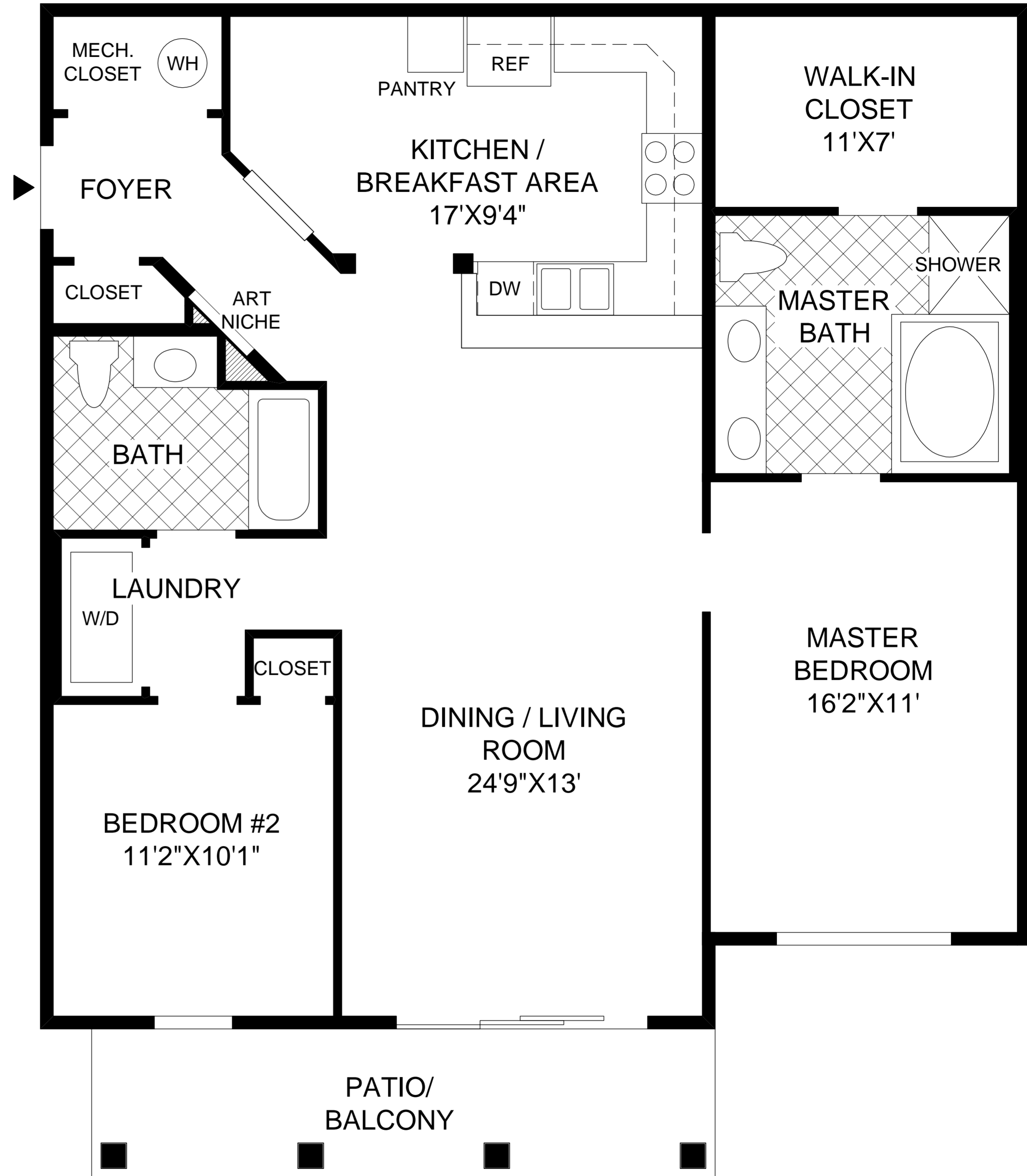
The foyer opens to the large dining room and living room, which offers access to the balcony.

The kitchen features ample counter and cabinet space and a convenient breakfast bar.

The master bedroom includes a large walk-in closet and a private bath with a Roman tub, separate shower, and a dual-sink vanity.

Nine-foot ceilings throughout.

2 bedrooms, 2 baths.



FLOOR PLAN

All dimensions are approximate, shown to the maximum dimensions of each room, and are subject to field variation. Dimensions should not be used to calculate room square footage. Some windows, exterior features, ceiling heights, and floor plans may vary with elevations. Some features may also vary from community to community. Please consult a Sales Representative for details. Options purchased must be specified in Exhibit B.

