

THE EL SANTIAGO

A covered entry opens to an inviting foyer highlighted by arched openings that leads to a formal dining room and living room which is accented by a beautiful coffered ceiling.

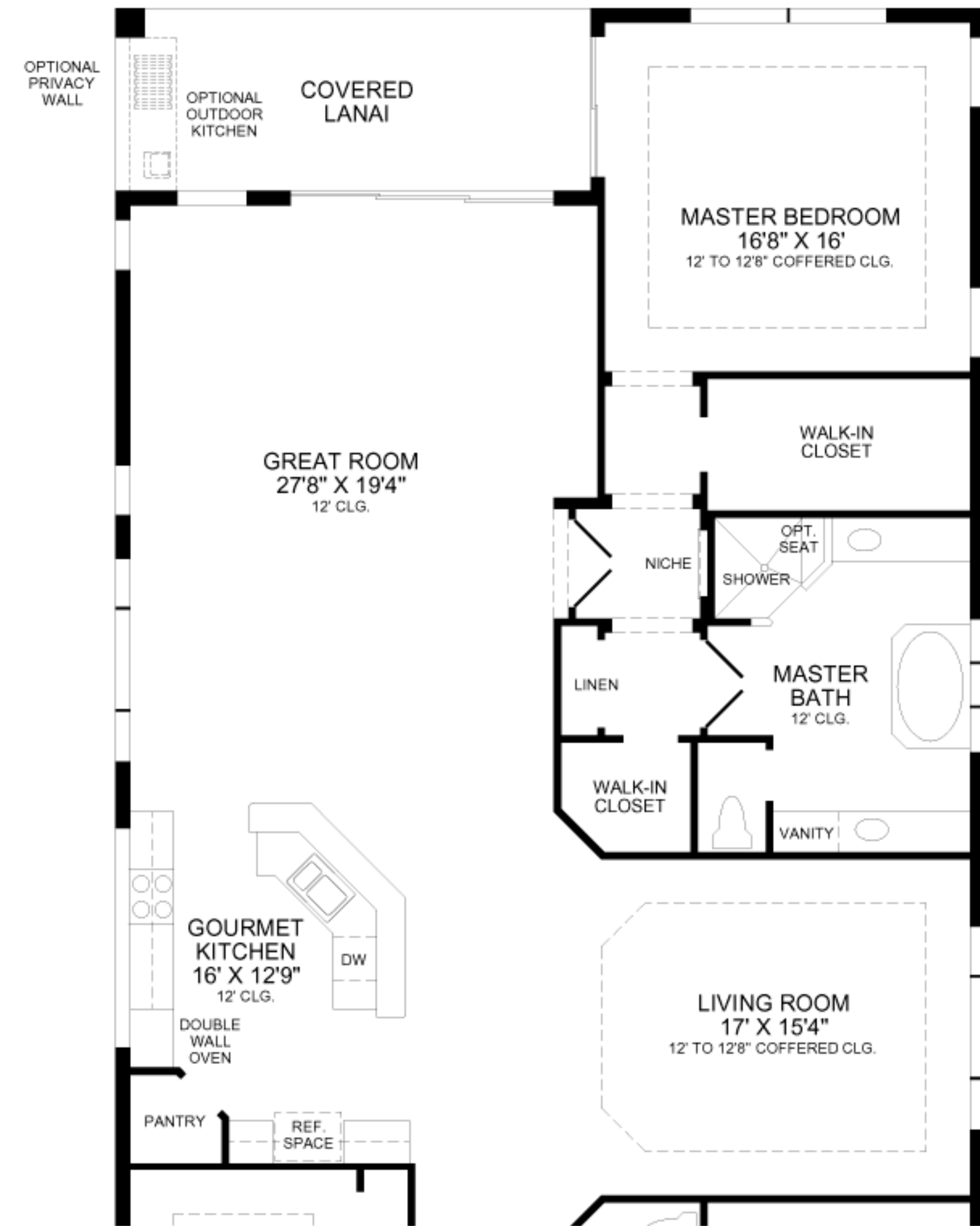
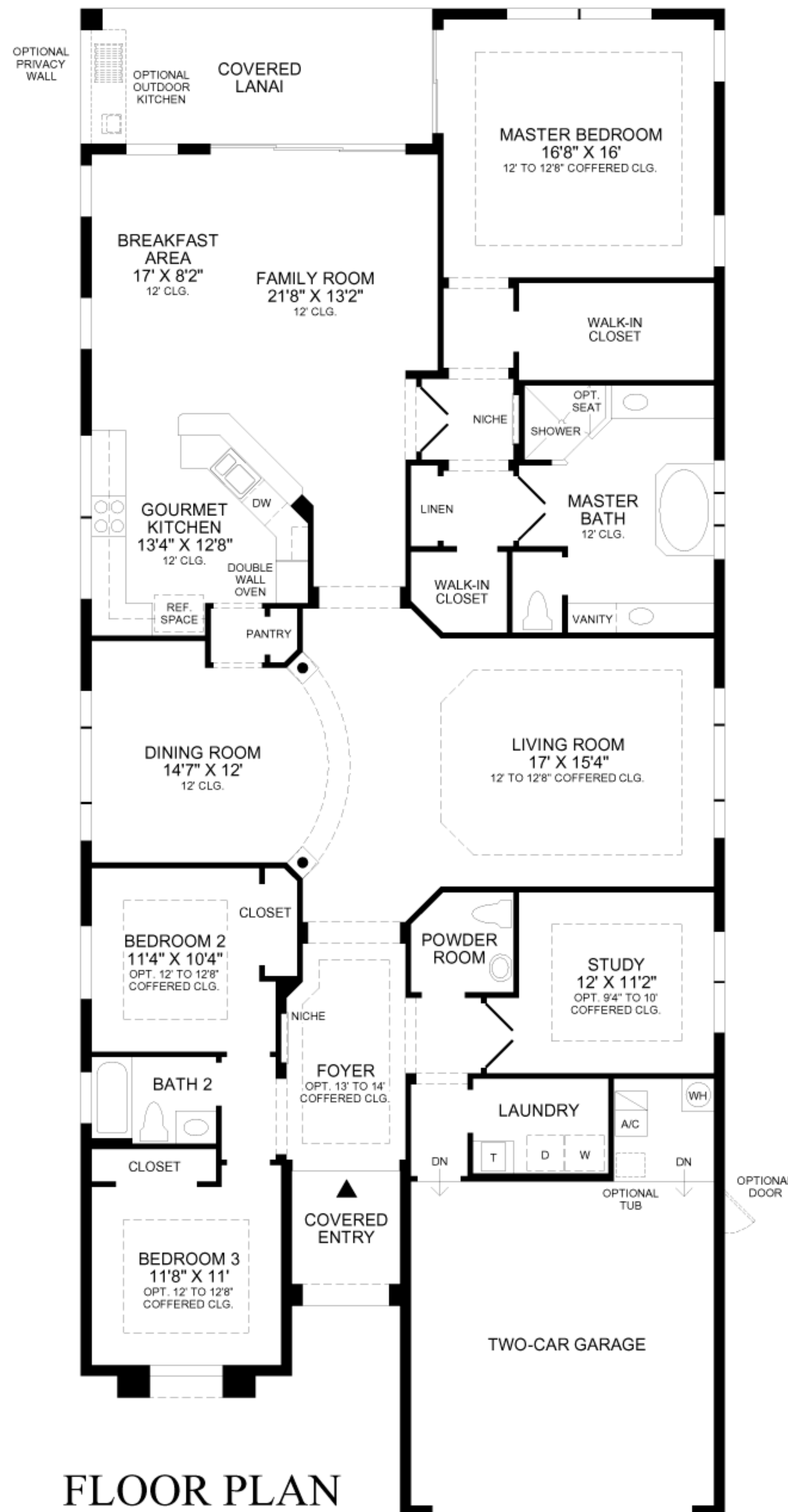
The well-equipped gourmet kitchen includes a separate pantry and a raised snack bar that encompasses a sunlit breakfast area and an expansive family room with triple-sliding glass doors that lead to the covered lanai.

The master bedroom suite features direct access to the covered lanai, coffered ceiling, two large walk-in closets and a luxurious master bath with his-and-her vanities, Roman tub, separate shower, and private water closet.

Additional features include two bedrooms, full bath, private study with double-door entry, conveniently located powder room, separate laundry room, and two-car garage.

Air Conditioned Living Area	2797 sq. ft.
Covered Lanai	181 sq. ft.
Covered Entry	56 sq. ft.
Garage	457 sq. ft.
Total	3491 sq. ft.

DRAFT



FLOOR PLAN

OPTIONAL KITCHEN LAYOUT

Toll Brothers
America's Luxury Home Builder™
tollbrothers.com



The floor plans and elevations of Toll Brothers homes are copyrighted. We have enforced and will continue to enforce our federal copyrights to protect the investment of our home buyers.

This insert was produced using recycled products.

All dimensions are approximate, shown to the maximum dimensions of each room, and are subject to field variation. Dimensions should not be used to calculate room square footage. Some windows, exterior features, ceiling heights, and floor plans may vary with elevations. Features may also vary from community to community. Please consult a Sales Representative for details. Options purchased must be specified in exhibit B.