

THE HICKORY

The two-story foyer features an elegant turned staircase.

The dining room is adjacent to the large great room with vaulted ceiling.

The kitchen features ample counter and cabinet space as well as a breakfast bar.

The master bedroom with cathedral ceiling is located on the first floor and features a private bath with Roman tub, separate shower, and large walk-in closet.

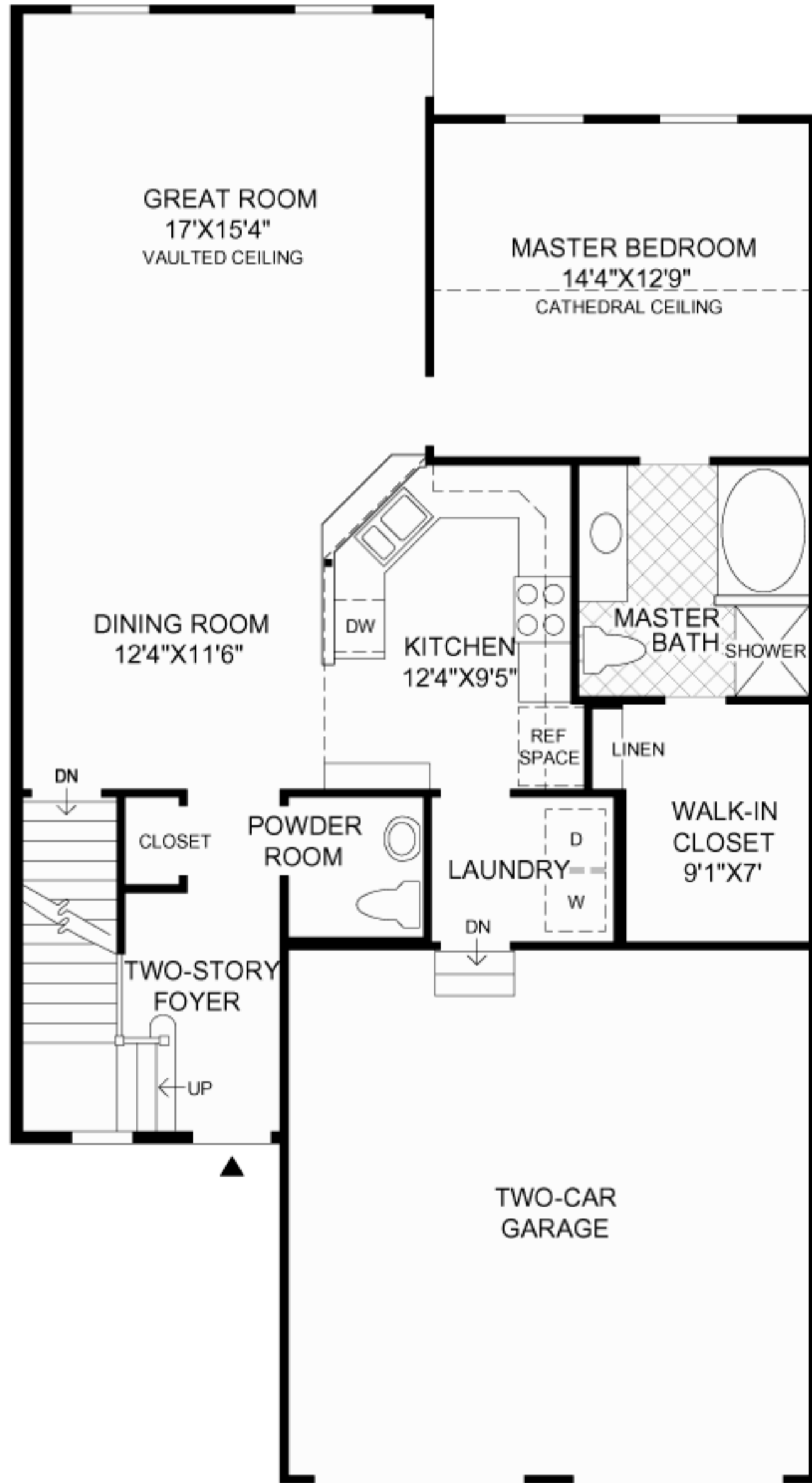
The second floor features a sitting area and a second bedroom with a large walk-in closet.

Nine-foot ceilings throughout the first floor.

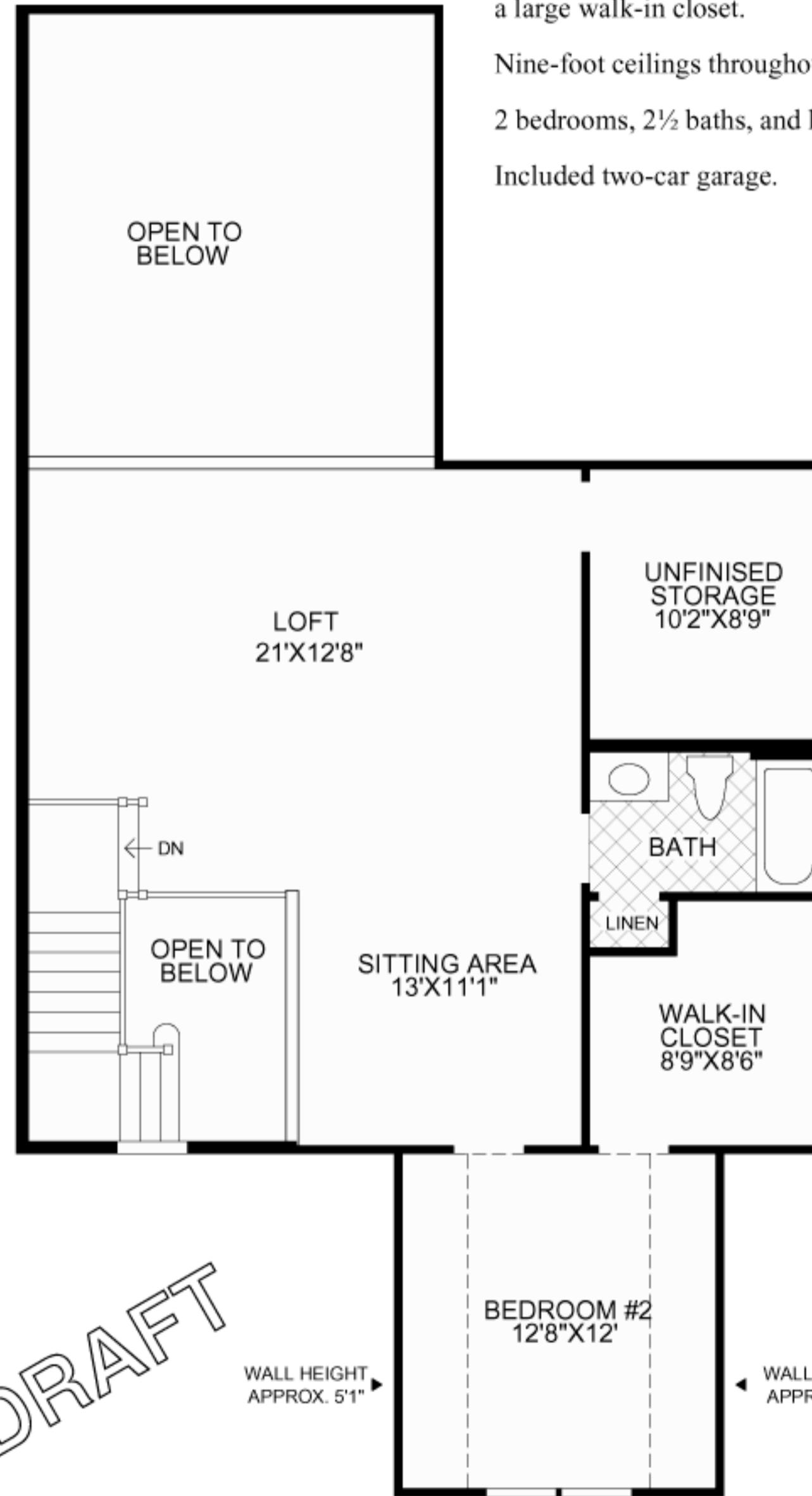
2 bedrooms, 2½ baths, and loft.

Included two-car garage.

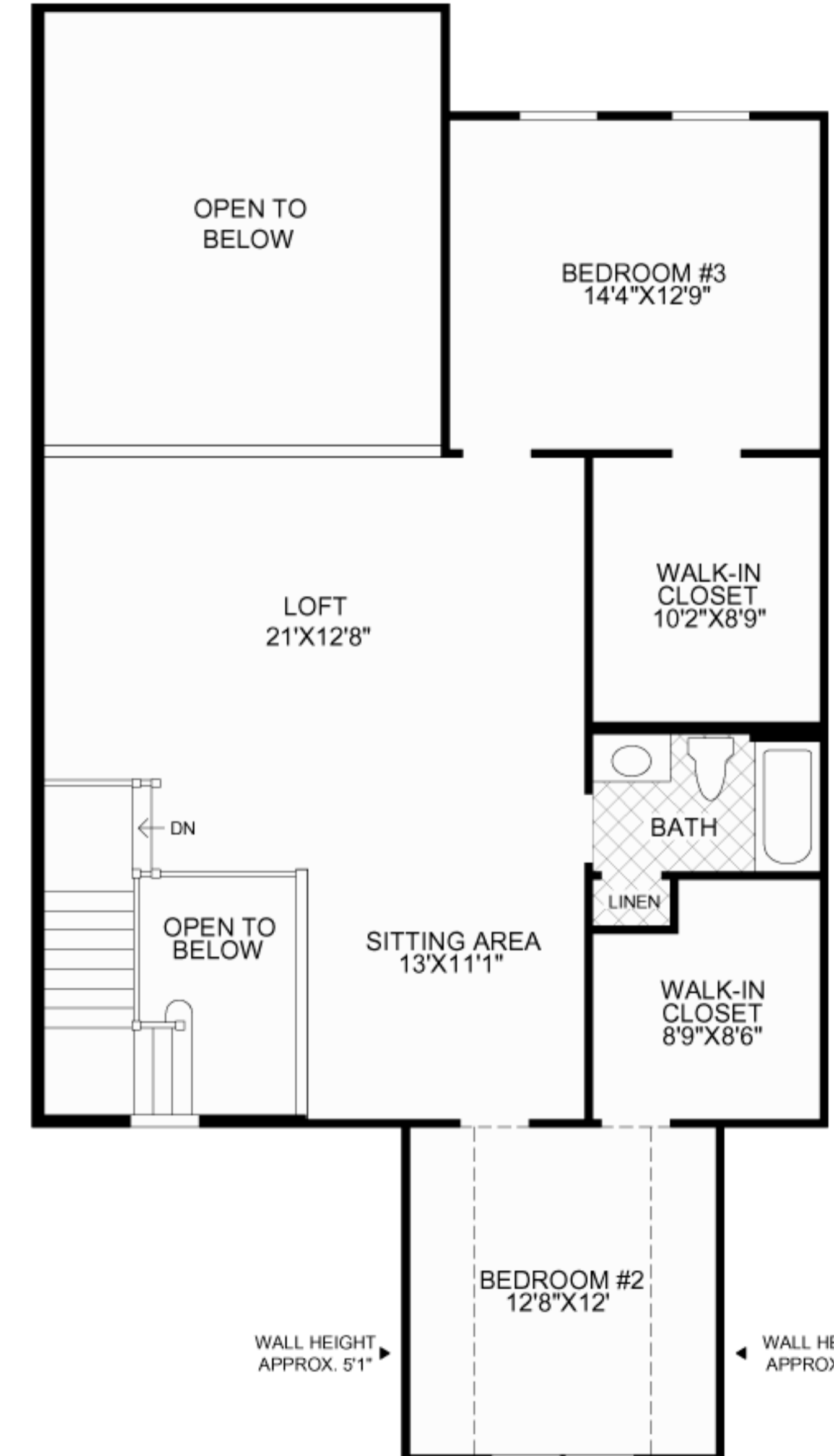
DRAFT



FIRST FLOOR



SECOND FLOOR



OPTIONAL LOFT WITH OPTIONAL ADDITIONAL BEDROOM

DRAFT

Toll Brothers
America's Luxury Home Builder™
tollbrothers.com

All dimensions are approximate, shown to the maximum dimensions of each room, and are subject to field variation. Dimensions should not be used to calculate room square footage. Some windows, exterior features, ceiling heights, and floor plans may vary with elevations. Some features may also vary from community to community. Please consult a Sales Representative for details. Options purchased must be specified in Exhibit B.



The floor plans and elevations of Toll Brothers homes are copyrighted. We have enforced and will continue to enforce our federal copyrights to protect the investment of our home buyers.