

THE MANCIANO

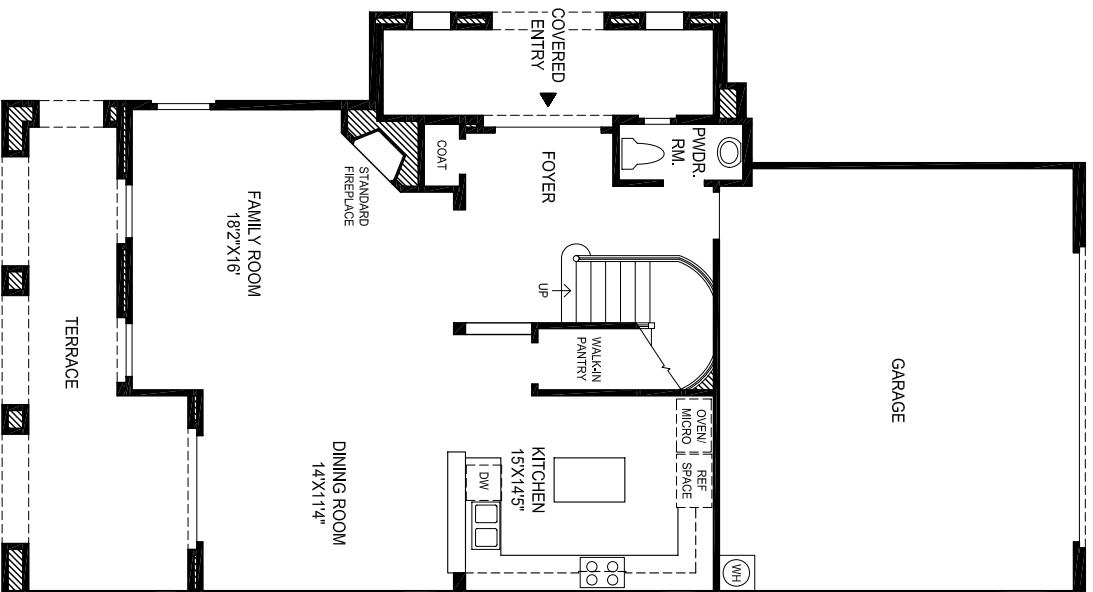
FIRENZE COLLECTION

Impressive double doors open to a dramatic two-story foyer.

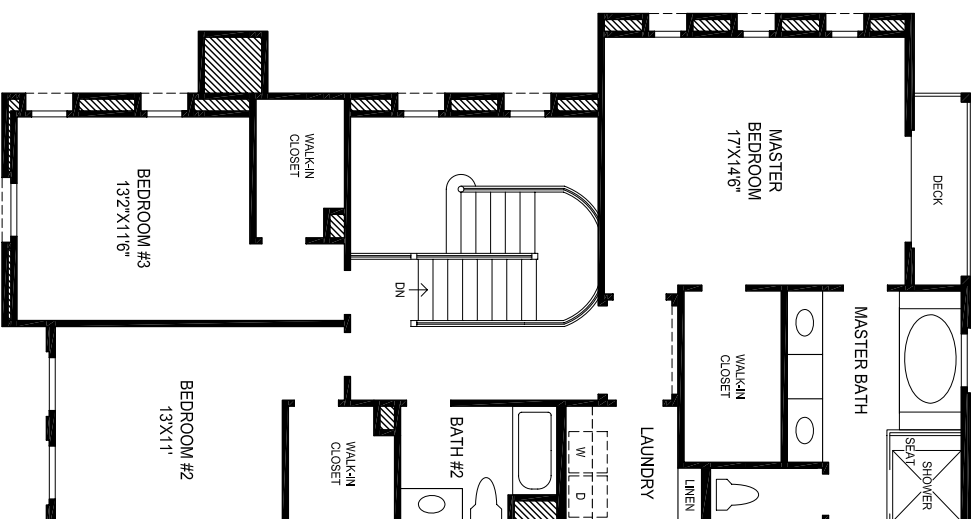
The spacious family room features a corner fireplace, while the adjacent dining room offers access to a private terrace.

The deluxe kitchen features a peninsula island with breakfast bar, walk-in pantry, granite slab countertops, and a view of the family and dining rooms.

The luxurious master suite features a large walk-in closet, private deck, and lavish master bath with Roman tub, separate shower, and dual vanities. 3 bedrooms, 2½ baths, laundry room with linen closet, and two-car garage.



MAIN LEVEL



UPPER LEVEL

DRAFT

All dimensions are approximate, shown to the maximum dimensions of each room, and are subject to field verification. Actual dimensions may vary. Features, materials, and finishes are subject to change without notice. Ceiling heights, and floor plans may vary with elevations. Features may also vary from community to community. Please consult a Sales Representative for details. Options purchased must be specified in Exhibit B. (C)-MASTER_0620 ©2007 TOLL BROTHERS, INC. (MANCIANO)

Toll Brothers
America's Luxury Home Builder™
tollbrothers.com



The floor plans and elevations of **Toll Brothers** homes are copyrighted. We have enforced and will continue to enforce our federal copyrights to protect the investment of our home buyers. This insert was produced using recycled products.