

◆ The Massiano ◆

This home features a covered entry that leads to the foyer with adjacent study with double door entry.

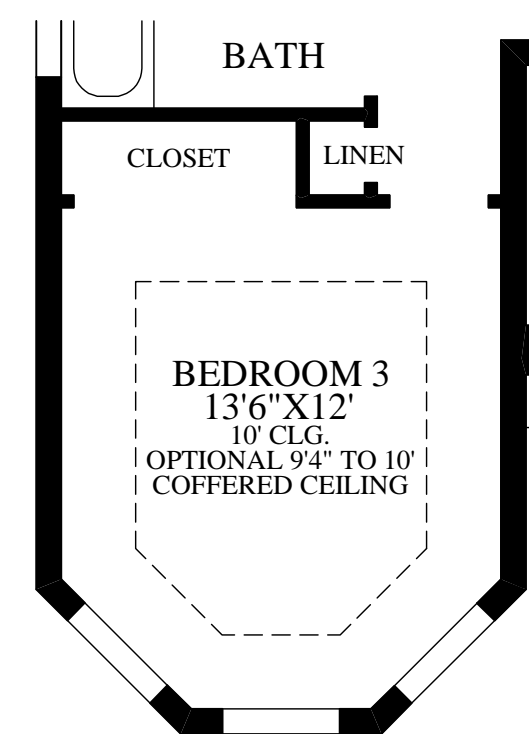
The living space of this home is conducive for entertaining with its open floor plan. The living area includes a formal dining room, gourmet kitchen with breakfast bar, sunlit breakfast area, and expansive great room with coffered ceiling and access to the covered lanai.

The master bedroom is highlighted by an elegant coffered ceiling, dual walk-in closets and a private bath with his-and-her vanities, Roman tub, separate shower, and a private toilet area.

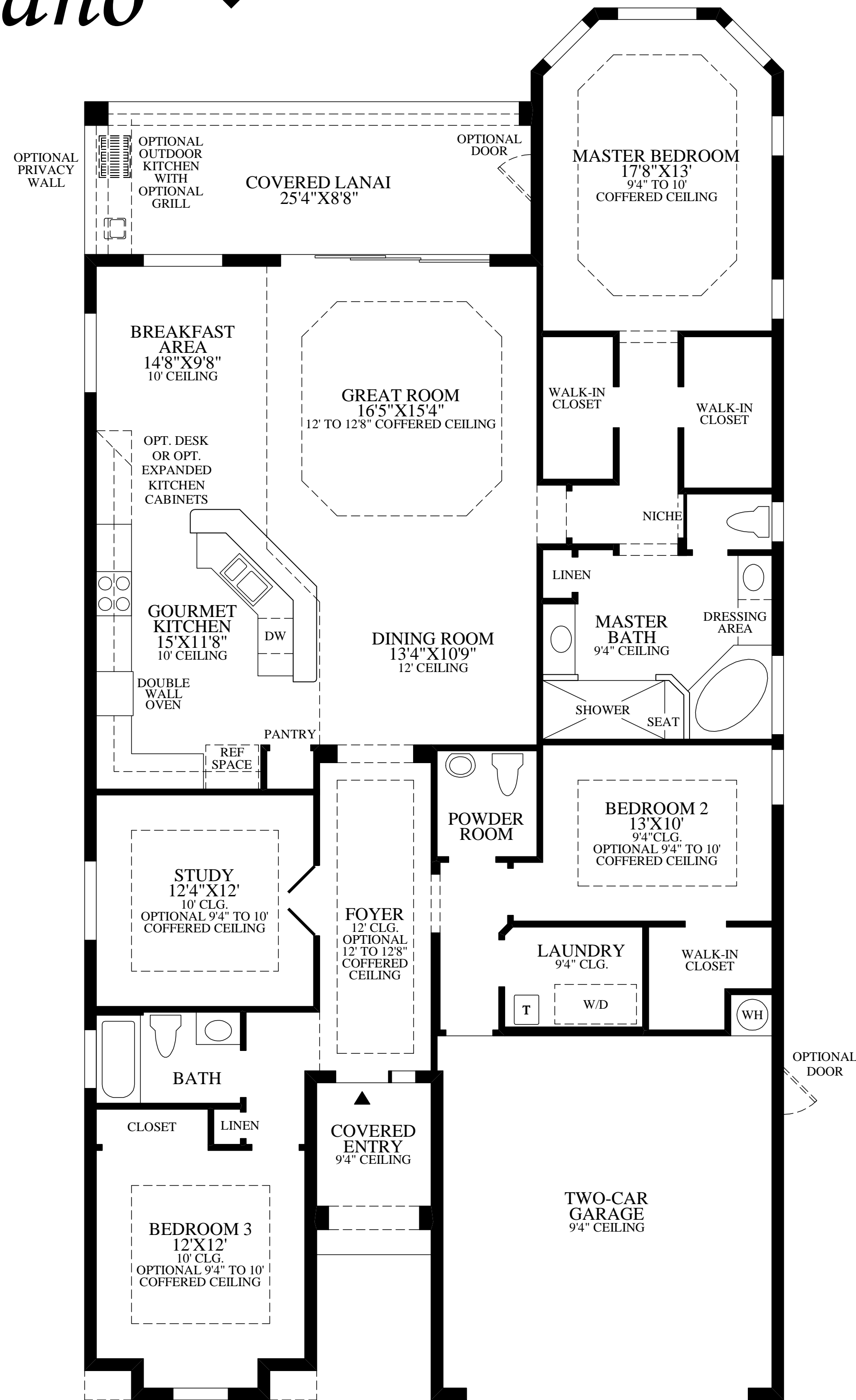
Included two-car garage.

3 bedrooms, 2½ baths.

Air Conditioned Living Area	2215 - 2230 sq. ft.
Covered Lanai	220 sq. ft.
Covered Entry	63 sq. ft.
Garage	419 sq. ft.
Total	2917 - 2932 sq. ft.



VERSAILLES AND MEDITERRANEAN ELEVATION



PROVINCIAL ELEVATION SHOWN.
TRADITIONAL ELEVATION INCLUDES
A LARGER BEDROOM 3.

Floor Plan

All dimensions are approximate, shown to the maximum dimensions of each room, and are subject to field variation. Dimensions should not be used to calculate room square footage. Some windows, exterior features, ceiling heights, and floor plans may vary with elevations. Some features may also vary from community to community. Please consult a Sales Representative for details. Options purchased must be specified in Exhibit B.

Toll Brothers
America's Luxury Home Builder™
tollbrothers.com

The floor plans and elevations of **Toll Brothers** homes are copyrighted. We have enforced and will continue to enforce our federal copyright to protect the investment of our home buyer.

EQUAL HOUSING OPPORTUNITY

This insert was produced using recycled products. ♻️