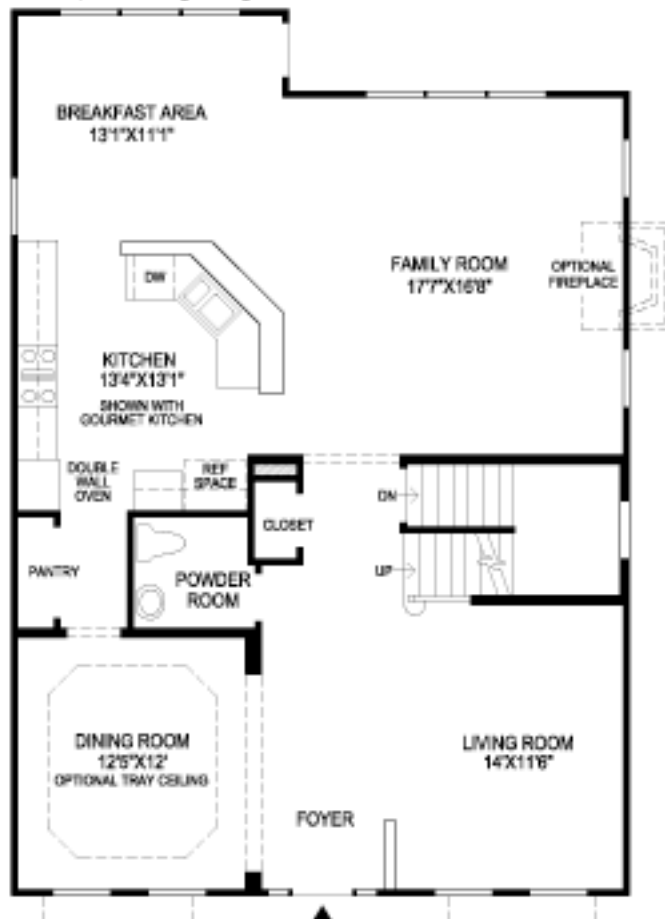


THE PUTNAM

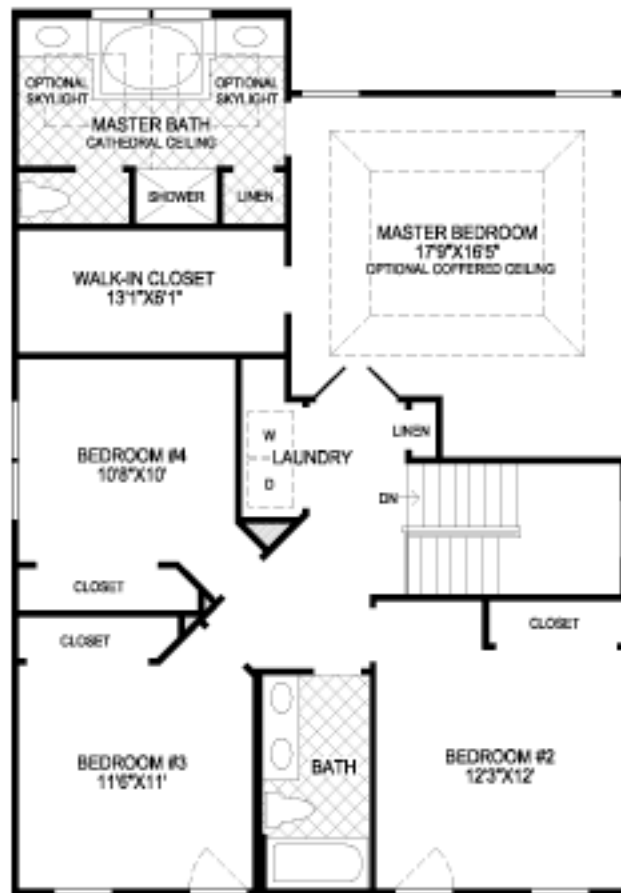
- The foyer opens right into the expensive living room and adjacent dining room.
- A large kitchen with abundant counter space is attached to the sunlit breakfast area.
- The spacious family room offers a private area to relax.
- Master bedroom with large walk-in closet and private bath with dual vanities, separate shower and soaking tub, and a private toilet area.
- Convenient second floor laundry.
- 9 foot ceilings throughout the first floor, 8 foot ceilings throughout the second floor.
- 4 bedrooms, 2½ baths.



VERSAILLES, VICTORIAN, AND WILLIAMSBURG ELEVATIONS INCLUDE A LARGER DINING ROOM.

VERSAILLES, VICTORIAN, AND WILLIAMSBURG ELEVATIONS INCLUDE A LARGER LIVING ROOM.

FIRST FLOOR



CHARLESTON ELEVATION INCLUDES A DOOR IN BEDROOM #2 AND BEDROOM #3.

SECOND FLOOR

All dimensions are approximate, shown to the maximum dimension of each room, and are subject to field variation. Dimensions should not be used to calculate square footage. Some windows, exterior features, ceiling heights, and floor plans may vary with elevations. Features may differ from community to community. Please consult a local builder for details. Options purchased must be specified in Exhibit B.

(04/2018) (126-0200) TOLL BROTHERS, INC. (PUTNAM_70)

Toll Brothers
America's Luxury Home Builder™
tollbrothers.com



The floor plans and elevations of Toll Brothers' homes are copyrighted. We have retained and will continue to enforce our federal copyrights to protect the investment of our home buyers.

This insert was produced using recycled products. ♻️