

# THE RHINEBECK

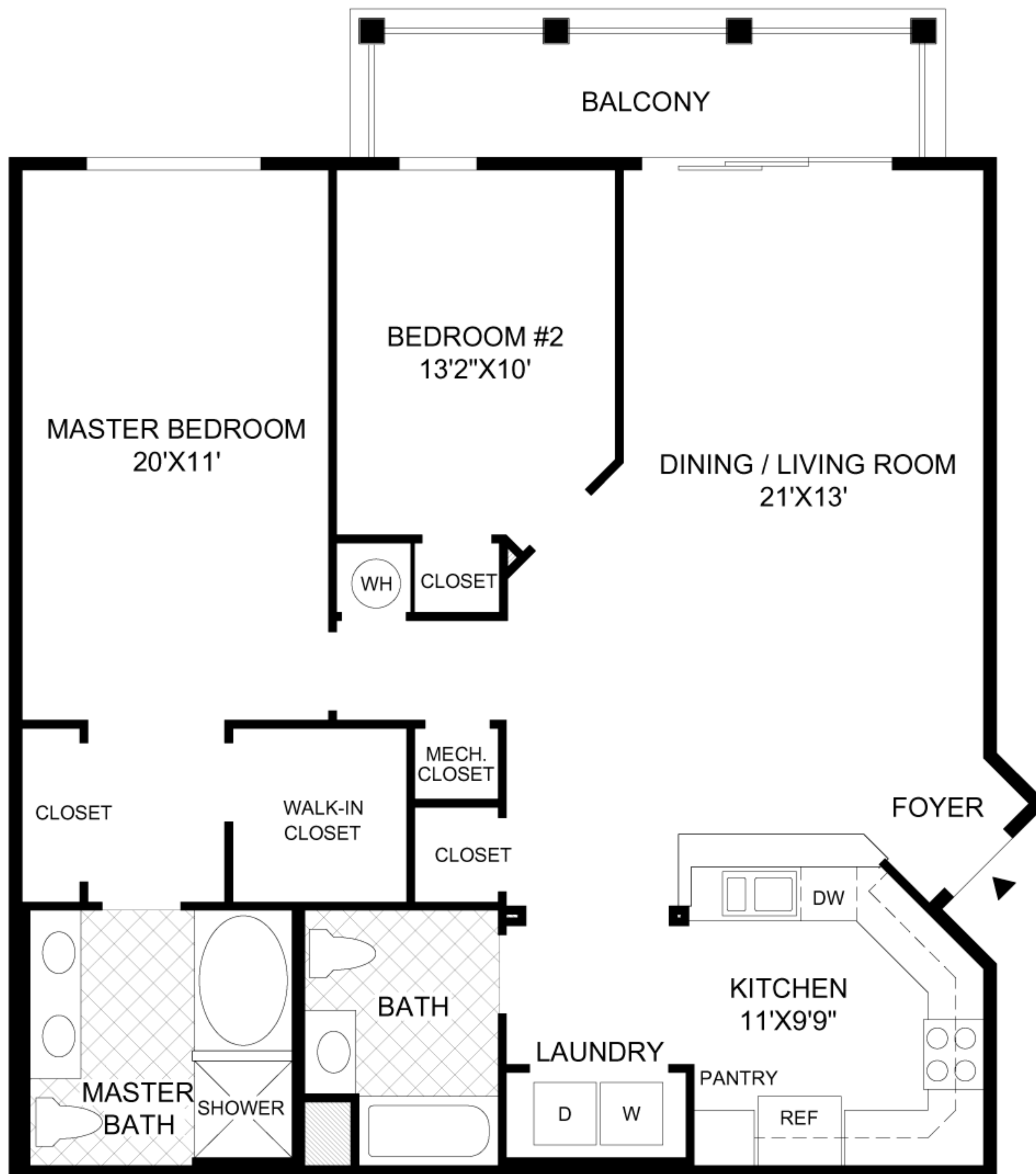
The foyer leads to the dining room and living room which offers access to the balcony.

The kitchen features ample counter and cabinet space and a convenient breakfast bar.

The master bedroom includes a walk-in closet and as well as a private bath with Roman tub, separate shower, and dual-sink vanity.

Nine-foot ceilings throughout.

2 bedrooms, 2 baths.



FLOOR PLAN

**Toll Brothers**  
 America's Luxury Home Builder™  
 tollbrothers.com

All dimensions are approximate, shown to the maximum dimensions of each room, and are subject to field variation. Dimensions should not be used to calculate room square footage. Some windows, exterior features, ceiling heights, and floor plans may vary with elevations. Some features may also vary from community to community. Please consult a Sales Representative for details. Options purchased must be specified in Exhibit B.



The floor plans and elevations of Toll Brothers homes are copyrighted. We have enforced and will continue to enforce our federal copyrights to protect the investment of our home buyers.

This insert was produced using recycled products. ♻️