

THE SANTA BARBARA

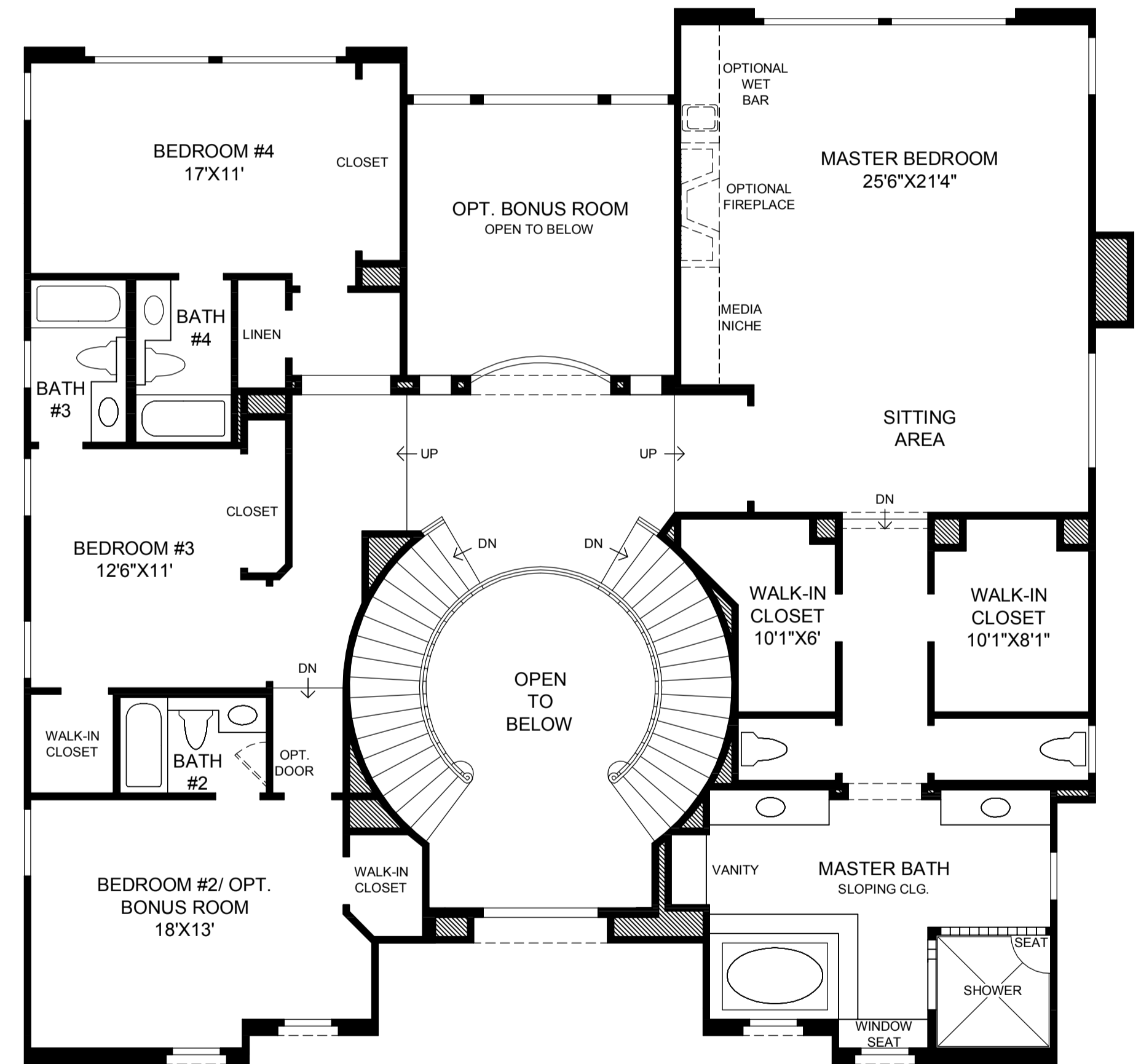
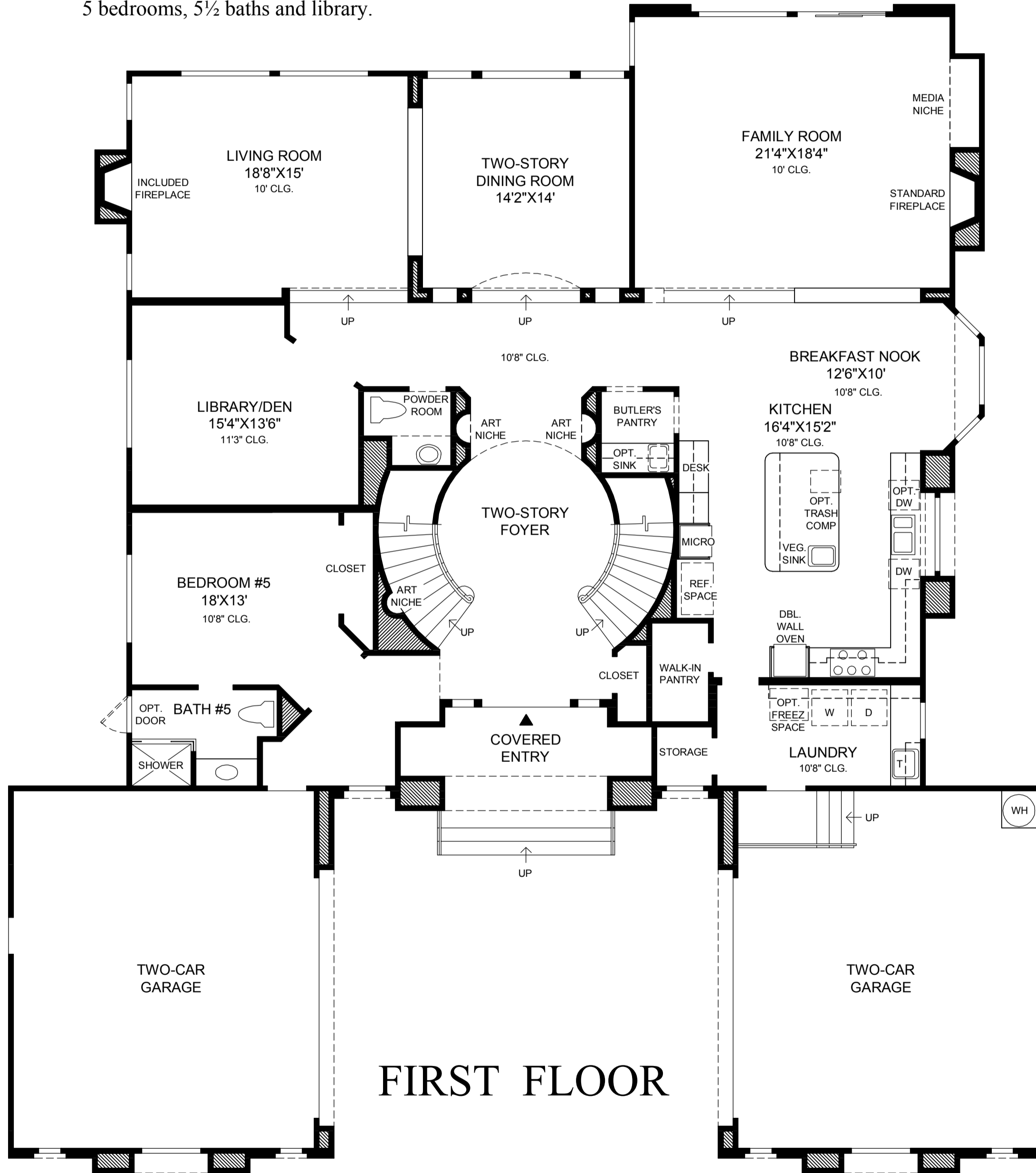
A dramatic two-story circular foyer leads into the formal living areas.

Formal living and dining areas designed for convenient entertaining.

Well-appointed kitchen which boasts a large island, walk-in pantry and butler pantry, with adjoining breakfast nook.

A gracious master bedroom suite with spacious sitting area, private shower, Roman tub and two large walk-in closets.

5 bedrooms, 5½ baths and library.



All dimensions are approximate, shown to the maximum dimensions of each room, and are subject to field variation. Dimensions should not be used to calculate room square footage. Some windows, exterior features, ceiling heights, and floor plans may vary with elevations. Features may also vary from community to community. Please consult a Sales Representative for details. Options purchased must be specified in Exhibit B.