

THE VICTORIA COLLECTION

Spacious foyer opens to dining room and two story living room.

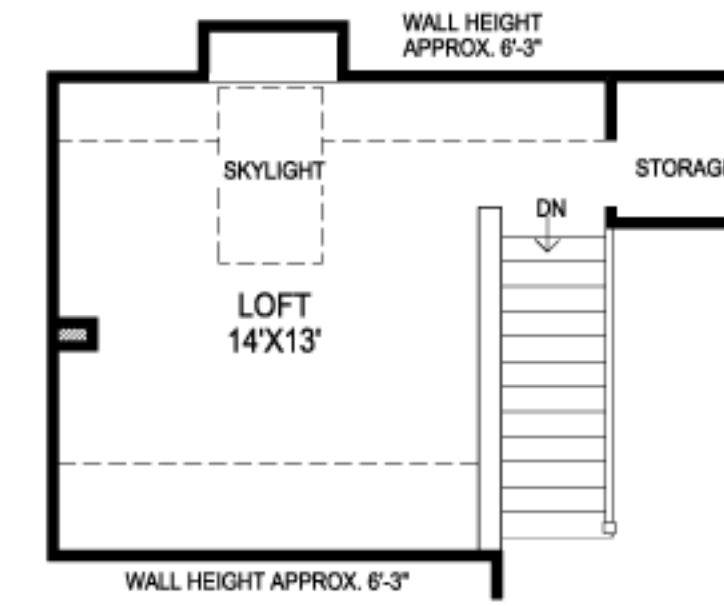
Formal dining room adjacent to kitchen.

Spacious family room with standard fireplace.

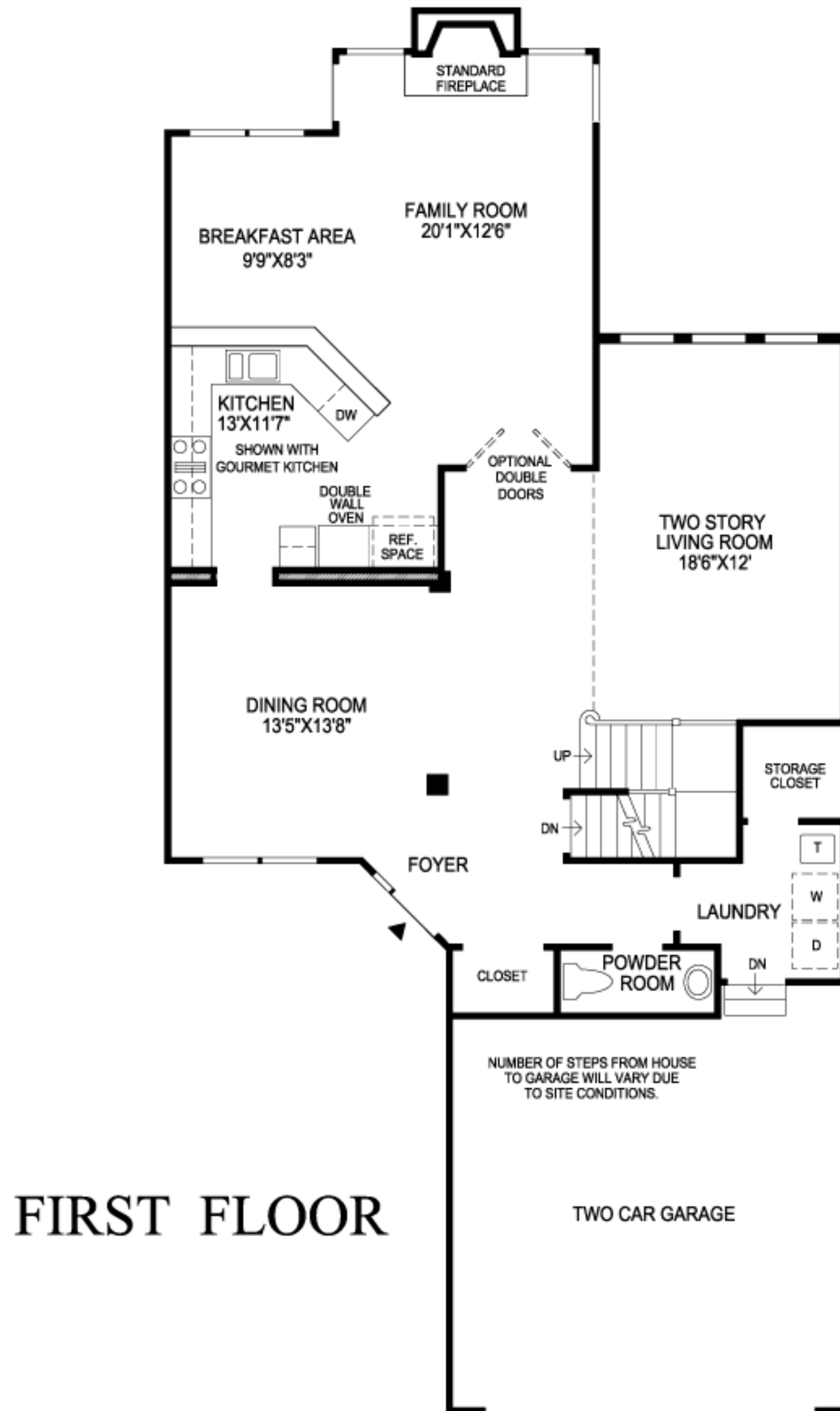
Well appointed kitchen opens to sunlit breakfast area.

Master bedroom suite including private bath with Roman tub, dressing area and two large walk in closets.

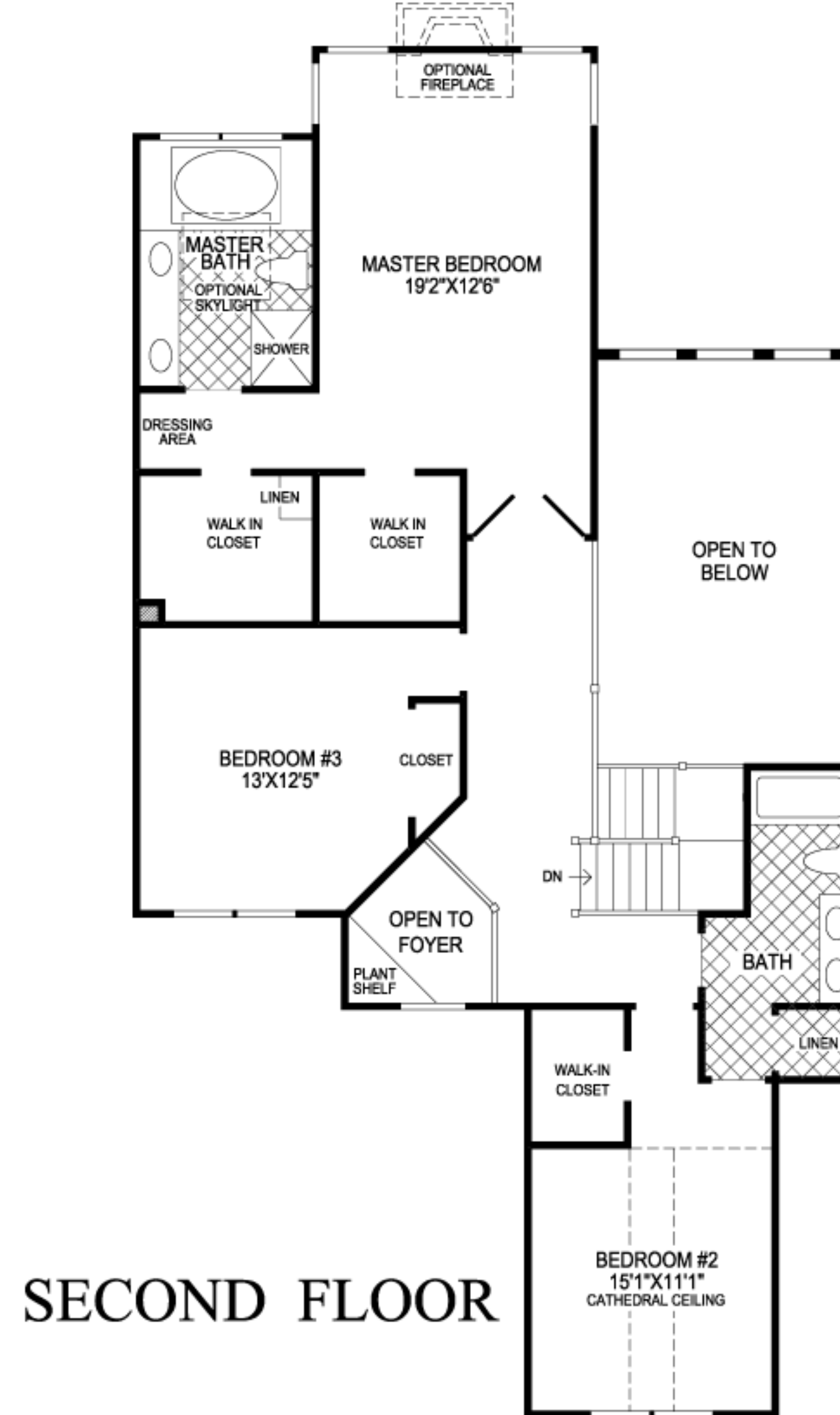
3 bedrooms, 2½ baths.



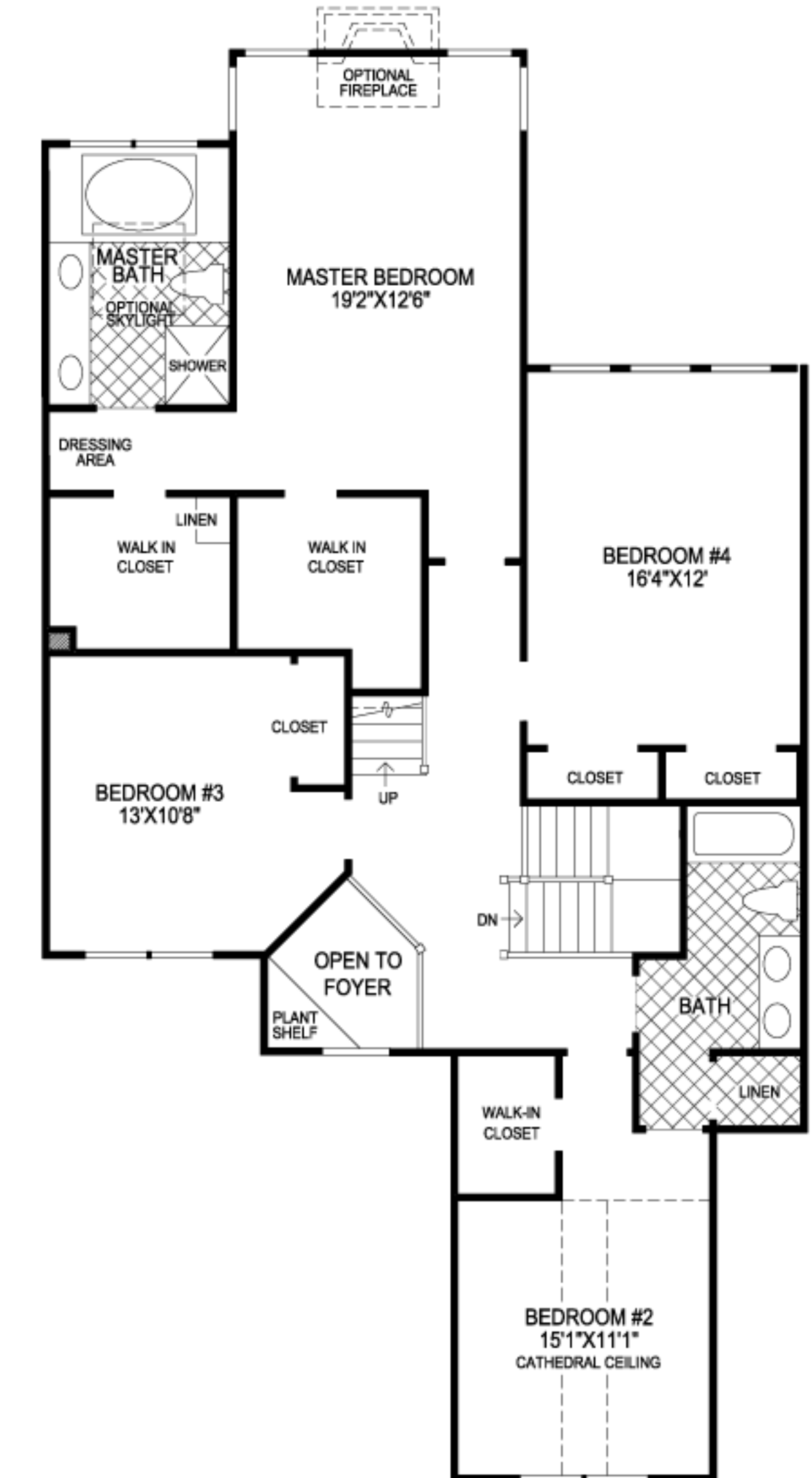
OPTIONAL LOFT



FIRST FLOOR



SECOND FLOOR



OPTIONAL FOURTH BEDROOM AND OPTIONAL LOFT

All room dimensions are approximate, shown to the maximum dimensions of each room, and are subject to field variation. Dimensions should not be used to calculate room square footage. Some windows, exterior features, and floor plans may vary with elevations. Features may also vary from community to community. Please consult a Sales Manager for details. Options purchased must be specified in Exhibit B.

(MASTER)_1103 ©2004 TOLL BROTHERS, INC. (VICTORIA_701)

Toll Brothers
America's Luxury Home Builder™
tollbrothers.com

The floorplans and elevations of Toll Brothers homes are copyrighted. We have enforced and will continue to enforce our federal copyrights to protect the investment of our homebuyers.

This insert was produced using recycled products. ♻️