

A GUIDE TO THE SERVICES AVAILABLE NEAR YOUR NEW HOME

# Princeton Manor

## COMMUNITY GUIDE



**Toll Brothers**  
America's Luxury Home Builder®

# **Toll Brothers**

**America's Luxury Home Builder®**

*Copyright 2012 Toll Brothers, Inc. All rights reserved. These resources are provided for informational purposes only and represent just a sample of the services available for each community. Toll Brothers in no way endorses or recommends any of the resources presented herein. This is not an offering where prohibited by law.*

# C O N T E N T S

COMMUNITY PROFILE .....	1
HOMEOWNER/CONDO ASSOCIATION.....	2
SHOPPING.....	2
MEDICAL FACILITIES .....	3
PUBLIC UTILITIES .....	3
WORSHIP .....	4
RESTAURANTS .....	5
RECREATIONAL FACILITIES .....	6-7
TRANSPORTATION .....	8
LIBRARIES.....	9
COLLEGES .....	9
VETERINARIAN.....	10
SOCIAL SERVICE ORGANIZATIONS.....	10
SENIOR LIVING .....	10
GOVERNMENT .....	11
EMERGENCY .....	11



# PRINCETON MANOR

LEARN ABOUT THE SERVICES YOUR COMMUNITY HAS TO OFFER



*Princeton Manor, an active-adult community by Toll Brothers in Middlesex County, offers homeowners a fun-filled carefree lifestyle. This exciting community features numerous amenities, including an 11,000 square foot clubhouse with spa facilities, bocce and tennis courts, billiards, an outdoor swimming pool and spa, and jogging and bicycle trails. Relax while Princeton Manor's HOA mows the lawn, shovels the snow, and maintains the community to reflect Toll Brothers' high standard of excellence.*

*South Brunswick Township is a desirable, centrally located area that attracts a diversity of people to settle within its boundaries. With a population of 43,000, much of the town's 42 square miles remain undeveloped and there are still significant amounts of wetlands, woodlands, and open space within the community.*

*Residents of Princeton Manor are just minutes from the intimate towns of Princeton and Cranbury, where they can enjoy shopping in the local boutiques and dining at many fine restaurants. With close proximity to major commuter routes and public transportation, residents of Princeton Manor can also enjoy everything that New York and Philadelphia have to offer.*

## HOMEOWNERS/CONDO ASSOCIATION

**FirstService Residential**

(732) 821-1739

## SHOPPING

### SHOPPING MALLS

#### LOCAL

##### **South Brunswick Square Mall**

*(approximately 5 minutes  
from community)*

Route 1 South

##### **Grocery**

Super Stop & Shop (732) 329-8288

##### **Hardware**

Home Depot

##### **Electronics**

Radio Shack (732) 329-8220

##### **Princeton Market Fair**

*(approximately 10 minutes  
from community)*

3535 US Highway 1

Princeton, NJ

(609) 452-7777

*Anchor Stores:*

*Barnes & Noble, Pottery Barn,*

*United Artists Theatres*

##### **Princeton Forrestal Village**

*(approximately 5 minutes  
from community)*

Route 1 & College Road

Princeton, NJ

(609) 799-7400

*Quaint Shops, Restaurants, Spa,  
Fitness Center, Hotel*



### CONVENIENCE STORES

##### **Quick Check**

Route 27 North  
Franklin Park, NJ

##### **Wawa Food Stores**

1273 Route 206  
Rocky Hill, NJ

##### **Wawa Food Stores**

Route 27 North  
North Brunswick, NJ

### REGIONAL

##### **Quakerbridge Mall**

*(approximately 15 minutes  
from community)*

150 Quaker Bridge Mall Road

Lawrenceville, NJ

(609) 799-8177

*Anchor Stores:*

*Macy's, Lord & Taylor, J.C. Penney*

##### **Menlo Park Mall**

*(approximately 30 minutes  
from community)*

Route 1 South and Parsonage Road

Edison, NJ

(732) 494-6255

*Anchor Stores:*

*Macy's and Nordstrom*

### GROCERY STORES

##### **Super Stop and Shop**

Route 27 South  
Franklin Park, NJ

##### **Whole Foods Market**

3495 U.S. Highway 1  
Princeton, NJ  
(609) 799-2919

##### **Wegman's**

240 Nassau Park Boulevard  
Princeton, NJ  
(609) 919-9300

## MEDICAL FACILITIES



### MEDICAL CENTER

#### St. Peters Medical Center

254 Easton Avenue  
New Brunswick, NJ  
(732) 828-3000  
Miles: 10.59  
Minutes: 17

### HOSPITAL

#### Robert Wood Johnson University Hospital

1 Robert Wood Johnson Place  
New Brunswick, NJ  
(732) 828-3000  
Miles: 8.96  
Minutes: 15

#### University Medical Center of Princeton at Plainsboro Princeton HealthCare System

1 Plainsboro Road at Route 1 North  
Plainsboro, NJ  
(866) 460-4PRN  
Miles: 7.4  
Minutes: 16

## PUBLIC UTILITIES



### ELECTRIC

**PSE&G Co.**  
4140 Quakerbridge Road  
Lawrenceville, NJ  
(800) 832-0076

### GAS

**PSE&G Co.**  
4140 Quakerbridge Road  
Lawrenceville, NJ  
(800) 436-7734

### TELEPHONE

**Verizon-FIOS**  
(800) 837-4966

### TRASH

**South Brunswick Township  
Public Works**  
(732) 329-4000

### RECYCLING

**South Brunswick Township  
Public Works**  
(732) 329-4000

### SEWER

**South Brunswick Township  
Sewer Department**  
Municipal Building  
Monmouth JCT., NJ  
(732) 329-4000

### WATER

**South Brunswick Township  
Water Department**  
Municipal Building  
Monmouth JCT., NJ  
(732) 329-4000

### CABLE T.V.

**Comcast**  
(800) 266-2278

**Christ the King  
Lutheran Church**  
3330 Route 27  
South Brunswick, NJ  
(732) 297-1200

**Community Presbyterian  
Church of Sand Hill**  
8 Cuyler Road  
South Brunswick, NJ  
(732) 297-9182

**Islamic Center of Central NJ**  
Route 1 and Stouts Lane  
South Brunswick, NJ  
(732) 297-4644

**Kendall Park Baptist Church**  
Route 27  
South Brunswick, NJ  
(732) 297-4644

**New Life Evangelistic Church**  
27 Old Davidsons Mill Road  
South Brunswick, NJ  
(732) 297-1167

**St. Cecilia R.C. Church**  
1090 Kingston Lane  
South Brunswick, NJ  
(732) 329-2893

**Solid Rock Ministries  
Crossroads School**  
South Brunswick, NJ  
(908) 422-8790

**Kendall Park Jewish  
Community Center**  
9 Stanworth Road  
Kendall Park, NJ  
(732) 297-0696

**The Jewish Center - Conservative  
Synagogue of Princeton**  
435 Nassau Street  
Princeton, NJ  
(609) 921-0100

**Durga Mandir Temple**  
4240 Route 27 North  
South Brunswick, NJ  
(609) 683-3760



**DINING**

**The Alchemist and Barrister Restaurant and Pub**  
 28 Witherspoon Street and Chambers Walkway  
 Princeton, NJ  
 (609) 924-5555

**Big Fish Restaurant**  
 Princeton Market Fair  
 (609) 919-1179

**Salt Creek Grille**  
 Princeton Forrestal Village  
 (609) 419-4200

**ONE 53**  
 153 Washington Street  
 Rocky Hill, NJ  
 (609) 924-1019

**Witherspoon Grill**  
 57 Witherspoon Street  
 Princeton, NJ  
 (609) 924-6011

**Mediterra**  
 29 Hulfish Street  
 Princeton, NJ  
 (609) 252-9680

**Ferry House Restaurant**  
 32 Witherspoon Street  
 Princeton, NJ  
 (609) 924-2488

**Elements Restaurant**  
 163 Bayard Lane  
 Princeton, NJ  
 (609) 924-0078

**Ruth's Chris Steak House**  
 Princeton Forrestal Village  
 (609) 452-0041

**Tre Piani Italian Restaurant**  
 Princeton Forrestal Village  
 (609) 452-1515

**Eno Terra**  
 4484 Route 27  
 Kingston, NJ  
 (609) 497-1777

**Rocky Hill Inn**  
 137 Washington Street  
 Rocky Hill, NJ  
 (609) 683-8930

**Sushi Palace**  
 4437 Route 27  
 Kingston, NJ  
 (609) 924-2882

**The Tiger's Tale**  
 1290 Route 206/518  
 Montgomery Twp., NJ  
 (609) 924-0262

**Shogun 27 Hibachi and Steak House**  
 Route 27 North  
 South Brunswick, NJ  
 (732) 422-1117

**Confectionately Yours**  
 3391 Route 27  
 Franklin Park, NJ  
 (732) 821-6863

**TAKEOUT**

**Tastee Sub Shop**  
 Route 27 South  
 Franklin Park, NJ

**Kam Luang Kitchen**  
 3391 Route 27  
 Franklin Park, NJ  
 (732) 297-8868

**Tiger Noodles**  
 260 Nassau Street  
 Princeton, NJ  
 (609) 252-0663

**On-site recreation: bocce ball courts, tennis courts, outdoor swimming pool, fishing piers, as well as jogging and bicycle paths.**

**EQUESTRIAN FACILITIES**

**Mercer County Equestrian Center**  
431 Federal City Road #B  
Pennington, NJ  
(609) 730-9059

**United States Equestrian Team**  
Pottersville Road  
Gladstone, NJ  
(908) 234-1251

**GOLF COURSES**

**Mercer County**

**PUBLIC**

**Cranbury Golf Club**  
49 Southfield Road  
Cranbury, NJ  
(609) 799-0341  
18 Holes

**Stony Brook Golf Club**  
Stony Brook Road  
Hopewell, NJ  
(609) 466-2215  
18 Holes

**Miry Run Country Club**  
106 B Sharon Road  
Robbinsville, NJ  
(609) 259-1010  
18 Holes

**Mountain View Golf Course**  
850 Bear Tavern Road  
Ewing, NJ  
(609) 882-4093  
18 Holes

**Mercer Oaks Golf Course**  
725 Village Road West  
Princeton Junction, NJ  
(609) 936-9603  
18 Holes

**Springdale Golf Club**  
26 College Road  
Princeton, NJ  
(609) 924-3198  
18 Holes

**Princeton Country Club**  
1 Wheeler Way  
Princeton, NJ  
(609) 452-2620  
18 Holes

**PRIVATE**

**Peddie Golf Course**  
South Main Street  
Hightstown, NJ  
(609) 490-7542  
18 Holes

**Lawrenceville School Golf Course**  
Route 206  
Lawrenceville, NJ  
(609) 896-1481  
9 Holes

**Greenacres Country Club**  
2170 Lawrenceville Road  
Lawrenceville, NJ  
(609) 896-0276  
18 Holes

**TPC at Jasna Polana**  
8 Lawrenceville Road  
Princeton, NJ  
(609) 683-9305  
18 Holes

**Trenton Country Club**  
201 Sullivan Way  
Trenton, NJ  
(609) 883-3800  
18 Holes

**Middlesex County**

**PUBLIC**

**Tamarack Golf Course Blue/Green**  
97 Hardenburg Lane  
East Brunswick, NJ  
(732) 297-2282  
36 Holes

**Tamarack Golf Course Red/White**  
97 Hardenburg Lane  
East Brunswick, NJ  
(732) 297-2282  
18 Holes

**Meadows at Middlesex**  
70 Hunters Glen Drive  
Plainsboro, NJ  
(609) 799-4000  
18 Holes

**Raritan Landing Golf Course**  
Sidney Road  
Piscataway, NJ  
(732) 885-9600  
18 Holes

**PRIVATE**

**Colonia Country Club**  
Colonia Boulevard  
Colonia, NJ  
(732) 381-9500  
18 Holes

**Clearbrook Golf Course**  
Applegarth Road  
Cranbury, NJ  
(609) 655-3443  
9 Holes



**Forsgate Country Club & Forsgate Country Club West Course**

Forsgate Drive  
Jamesburg, NJ  
(732) 521-0700  
36 Holes

**Glenwood Country Club**

1655 Route 9  
Old Bridge, NJ  
(732) 607-2582  
18 Holes

**Metuchen Golf & CC**

244 Plainfield Road  
Edison, NJ  
(732) 548-4980  
18 Holes

**Plainfield Country Club**

Box 311 Woodland Avenue  
Edison, NJ  
(908) 757-1800  
18 Holes

**Rossmoor Golf Course**

Clubhouse Drive  
Rossmoor, NJ  
(609) 655-3182  
18 Holes

**PARKS**

**GENERAL**

**New Jersey Division of Parks and Forestry**  
(609) 292-2797

**LOCAL**

**Davidson's Mill Pond Park**  
Riva Avenue  
South Brunswick, NJ

**COUNTY**

**Johnson Park**  
River Road  
Piscataway, NJ

**STATE**

**Princeton Battlefield State Park**  
Princeton, NJ  
(609) 921-0074

**Delaware and Raritan Canal State Park**

625 Canal Road  
Somerset, NJ  
(732) 873-3050  
dandrcanal.com

**RECREATION CENTER**

Facilities include a Community Center located at Woodlot Park and New Road and Senior Center located at the Municipal Building on Route. 522. Movie theaters are located nearby and art centers are located in Princeton and New Brunswick.

**TENNIS**

**Princeton Racquet Club**

150 Raymond Road  
Princeton, NJ 08540  
(732) 329-6200

**New Jersey Department  
of Transportation**  
(609) 530-8041

**AIRPORTS**

**COUNTY**

**Trenton Mercer Airport**  
West Trenton Road  
West Trenton, NJ  
(609) 882-1600  
Miles: 11.6  
Minutes: 20

**Princeton Airport**  
US Highway 206 North  
Princeton, NJ  
(609) 921-3100  
Miles: 5  
Minutes: 15

**INTERNATIONAL**

**Newark International Airport**  
10 Toler Place  
Newark, NJ  
(973) 961-6000  
Miles: 38  
Minutes: 50

**Philadelphia International Airport**  
8800 Essington Avenue  
Philadelphia, PA  
(215) 937-6937  
Miles: 55  
Minutes: 60



**BUSES**

Service available on Route 27  
**Suburban Transit**  
(732) 249-1100  
Distance from Community: 2 miles  
Minutes: 4 minutes  
Commute time to New York City:  
1 hour and 30 minutes  
Cost per trip: \$12.30  
Round trip cost: \$24.00  
Commuter Book: \$390 monthly  
Frequency of Departures:  
15 to 20 min. peak

**DIVISION OF  
MOTOR VEHICLES**

2236 Route 130 North  
Dayton, NJ  
(609) 292-6500

**MAJOR  
HIGHWAYS**

Highways: I-95, I-295  
Turnpike: NJ Turnpike  
State Routes: 1, 27, 522, & 130

**RAILROADS**

**New Jersey Transit**  
(800) 772-2222 or (973) 275-5555  
North East Corridor Line serving  
Princeton Junction with SEPTA  
connections to Philadelphia  
Distance from Community: 4 miles  
Minutes: 10  
Commute time to Major Work  
Place/City: 1 hour (NYC Penn  
Station)  
Senior one way: \$6.75  
Cost per trip: \$14.75  
Round trip cost: \$29.50  
Commuter Book: \$126 (per week)  
\$414 (month)  
Frequency of Departures:  
15 to 20 min. peak

**AMTRAK**  
(800) 523-8720

## LIBRARIES



### **PUBLIC**

#### **South Brunswick Public Library**

110 Kingston Lane  
Monmouth JCT., NJ  
(732) 329-4000 ext. 280

## COLLEGES

### **COUNTY**

**Middlesex County College**  
2600 Woodbridge Avenue  
Edison, NJ  
(732) 548-6000

### **STATE**

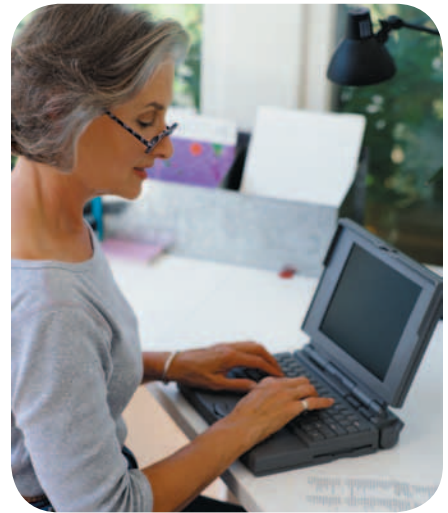
**Rutgers, the State University**  
65 Davidson Road  
Piscataway, NJ  
(732) 932-1766

**The College of New Jersey**  
PO Box 7718  
Ewing, NJ  
(609) 771-1855

### **PRIVATE**

**Princeton University**  
144 West College Avenue  
Princeton, NJ  
(609) 258-3060

**Rider University**  
2083 Lawrenceville Road  
Lawrenceville, NJ  
(609) 896-5000



## VETERINARIAN

### **Paulus Animal Hospital**

7 Auston Road  
Kendall Park, NJ  
(732) 297-1212

### **County Veterinary Hospital**

4222 Route 27 North  
Princeton, NJ  
(732) 422-7500

## SOCIAL SERVICE ORGANIZATIONS

### **SERVICE**

#### **American Cancer Society**

3076 Princeton Pike  
Lawrenceville, NJ  
(609) 895-0101

#### **American Legion Post**

South Brunswick Post 401  
(732) 329-9861

#### **American Red Cross**

707 Alexander Road #101  
Princeton, NJ  
(609) 951-8550

### **HISTORY SOCIETY**

#### **The New Jersey Historical Society**

52 Park Place  
Newark, NJ  
(973) 596-8500

### **OTHER**

For information on other Social Service Organizations contact the Chamber of Commerce of South Brunswick.

## SENIOR LIVING

### **SENIOR CITIZENS CENTER**

#### **South Brunswick Senior Center**

540 Ridge Road  
Monmouth Junction, NJ  
(732) 329-6171  
(732) 329-4000 ext. 670



### **ASSISTED LIVING**

#### **AARP**

Forrestal Village  
132 Main Street  
Princeton, NJ  
(609) 987-0744

#### **Middlesex County Office on Aging**

1 JFK Square  
New Brunswick, NJ  
(732) 745-3295

## GOVERNMENT

### MUNICIPAL BUILDING

Municipal Building  
540 Ridge Road  
Monmouth Junction, NJ  
(732) 329-4000

### POST OFFICE

Kendall Park  
3124 State Route 27  
Kendall Park, NJ

### VOTER REGISTRATION

Middlesex County  
Board of Social Services  
181 How Lane  
New Brunswick, NJ  
(732) 745-3500

### GOVERNMENTAL AGENCIES

**Board of Health**  
(732) 329-4000 ext. 237

**Dog Licenses**  
(732) 329-4000 ext. 313

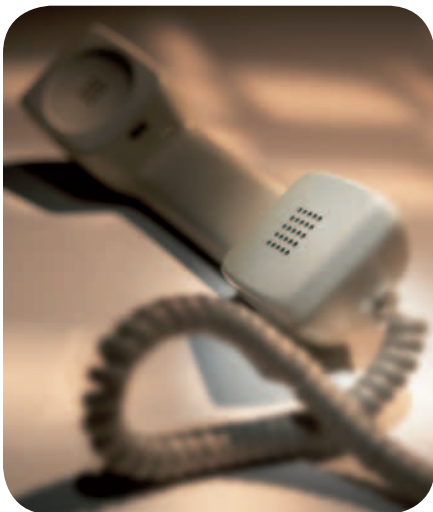
**Public Assistance**  
(732) 329-4000 ext. 275

**Public Safety**  
(732) 329-4000

**Social Services**  
(732) 745-3500

**Municipal Telephone Directory**  
(732) 329-4000 ext. 313

## EMERGENCY



### POLICE

**South Brunswick Police Department**  
Route 522 / Kingston Lane  
Monmouth Junction, NJ  
(732) 329-4646

### FIRE

**Kendall Park Volunteer Fire Co.**  
New Road  
Kendall Park, NJ  
(732) 329-4646

**Fire Safety**  
(732) 329-4000 ext. 214

### FIRST AID

**Kendall Park First Aid Squad**  
New Road  
PO Box 5064  
Kendall Park, NJ  
(732) 297-0621

### POISON CONTROL

**New Jersey Poison Information and Education Systems**  
201 Lyons Avenue  
Newark, NJ  
Emergency: (800) 222-1222  
Admin: (973) 926-7443

